

Harris County Appraisal District

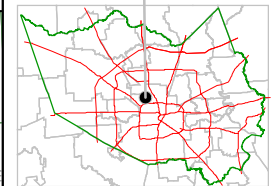


0 100 200

PUBLICATION DATE:
8/15/2011

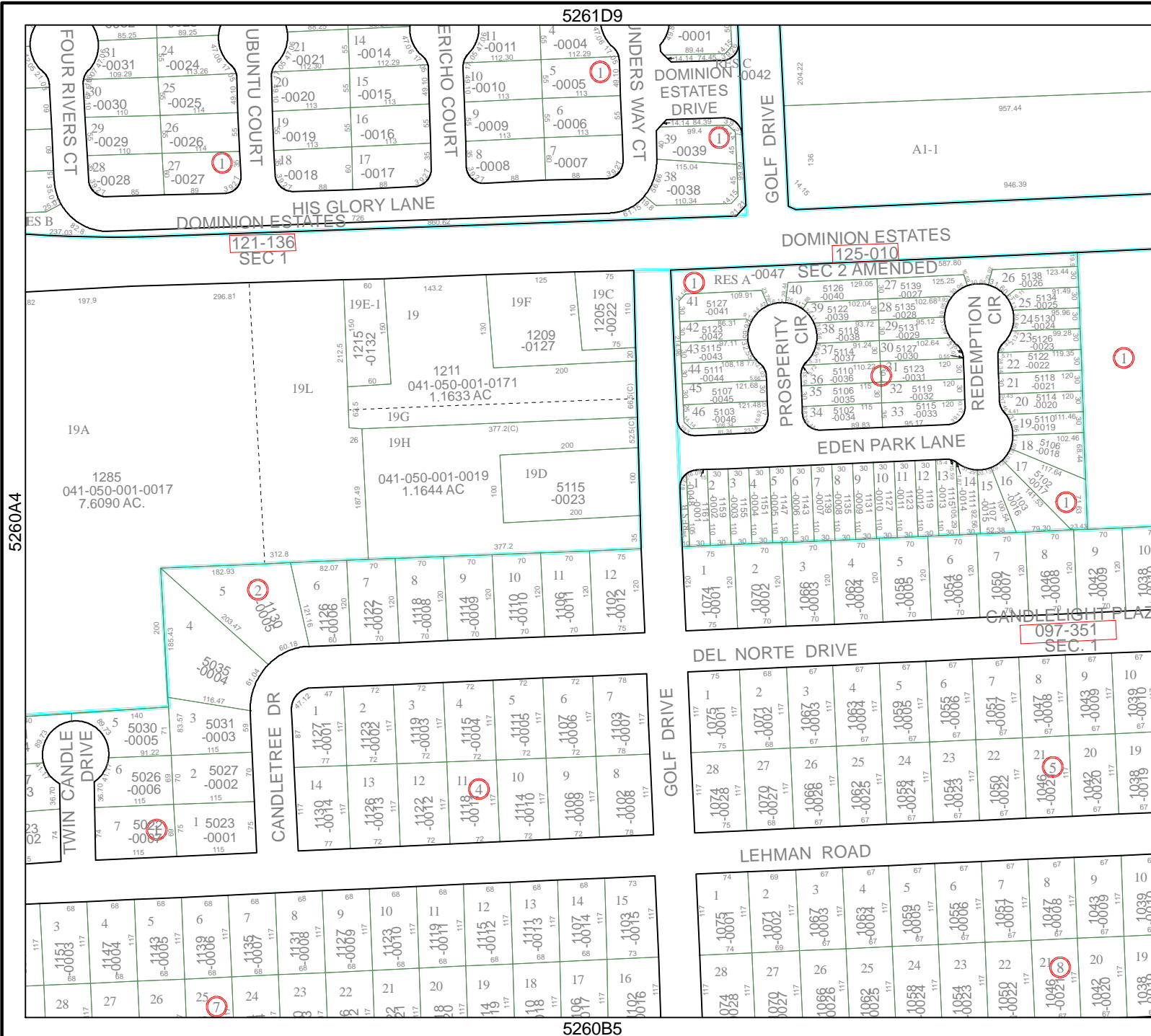
Geospatial or map data maintained by the Harris County Appraisal District is for informational purposes and may not be suitable for legal, engineering, or surveying purposes. It does not represent an on-the-ground survey and only represents the approximate location of property boundaries.

MAP LOCATION



FACET 5260B

1	2	3	4
5	6	7	8
9	10	11	12



5260A4

5261D9

121-136
SEC 1

125-010

097-351
SEC. 1

5260B5

5260B2

