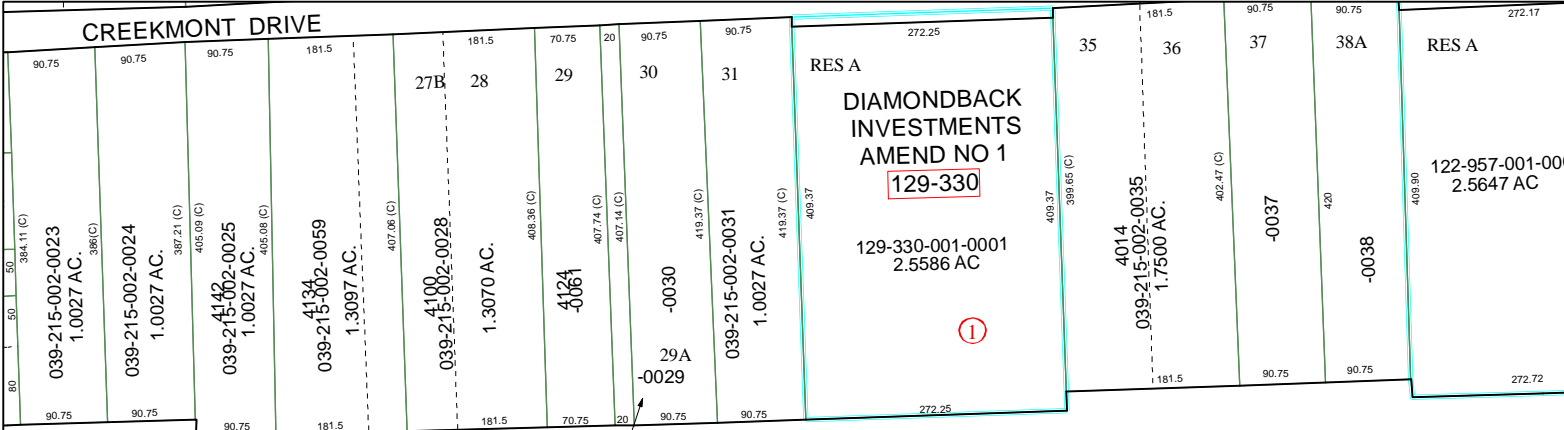


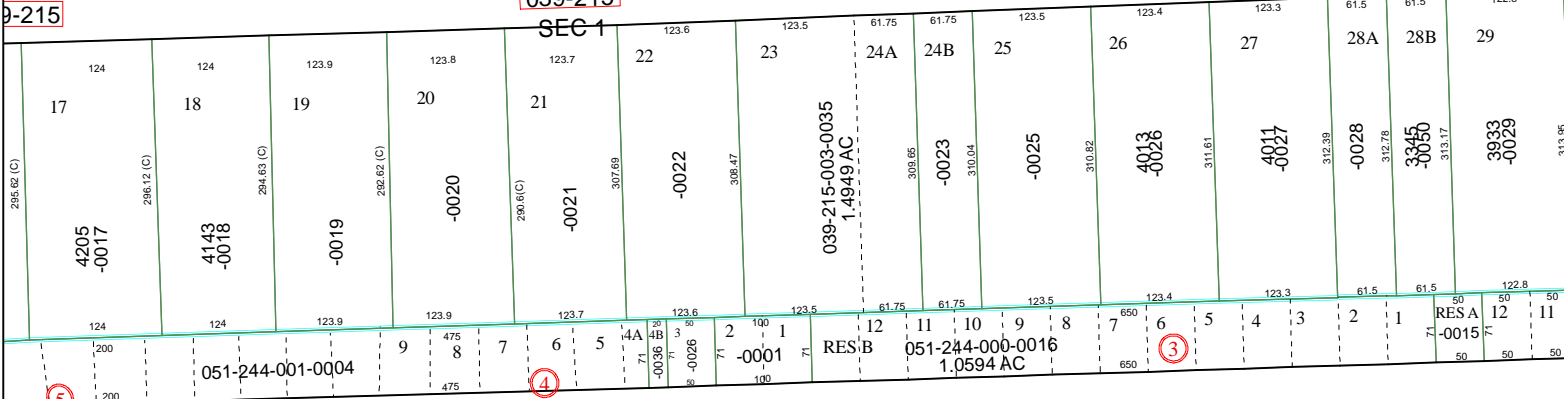
5261C9

CREEKMONT DRIVE



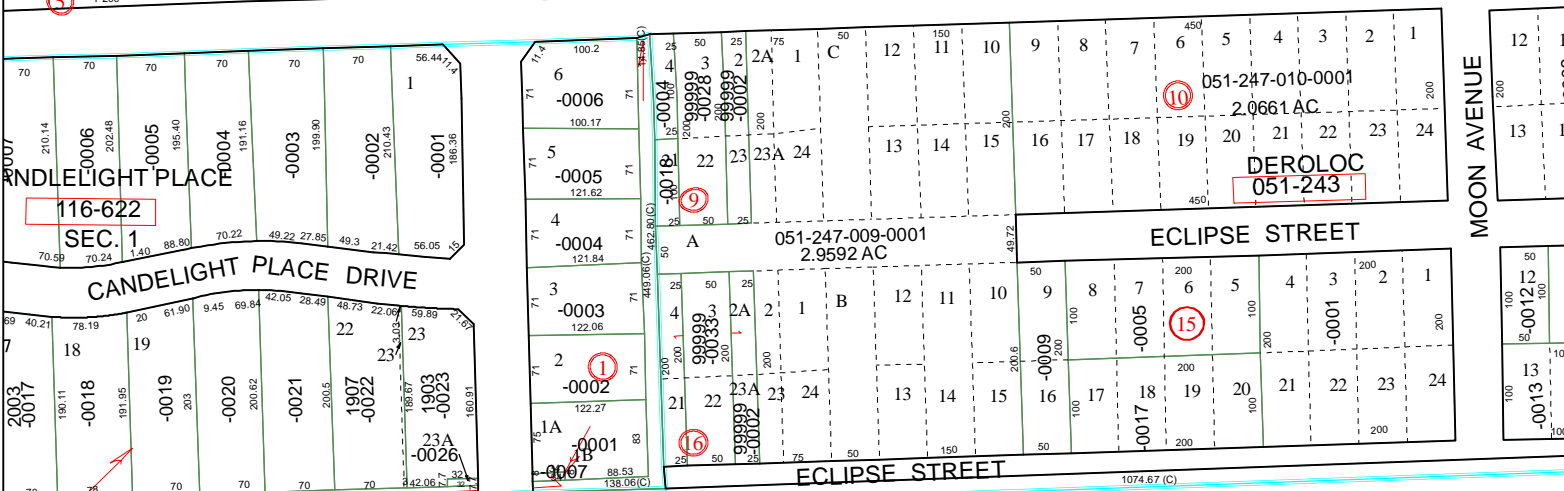
ROSSLYN HEIGHTS ACRE HOMES

GHTS P/R NO. 1



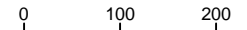
5160B4

5260A2



5260A5

# Harris County Appraisal District

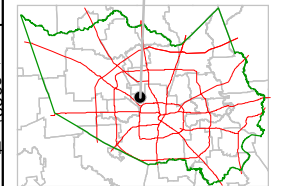


PUBLICATION DATE: 1/6/2012

Geospatial or map data maintained by the Harris County Appraisal District is for informational purposes and may not be suitable for legal, engineering, or surveying purposes. It does not represent an on-the-ground survey and only represents the approximate location of property boundaries.



MAP LOCATION



## FACET 5260A

1	2	3	4
5	6	7	8
9	10	11	12