

5169D8

RES F

814.13

814.13

CYPRESS STATION
108-233
SEC. 2

CYPRESS STATION
108-235
SEC. 3

108-233-000-0001
32.5516 AC

042-185-000-0486
16.5890 AC

CYPRESS TRACE ROAD

351.55

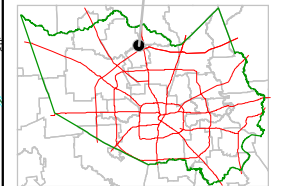
123.34

0 100 200

PUBLICATION DATE:
8/15/2011

Geospatial or map data maintained by the Harris County Appraisal District is for informational purposes and may not be prepared for or be suitable for legal, engineering, or surveying purposes. It does not represent an on-the-ground survey and only represents the approximate location of property boundaries.

MAP LOCATION



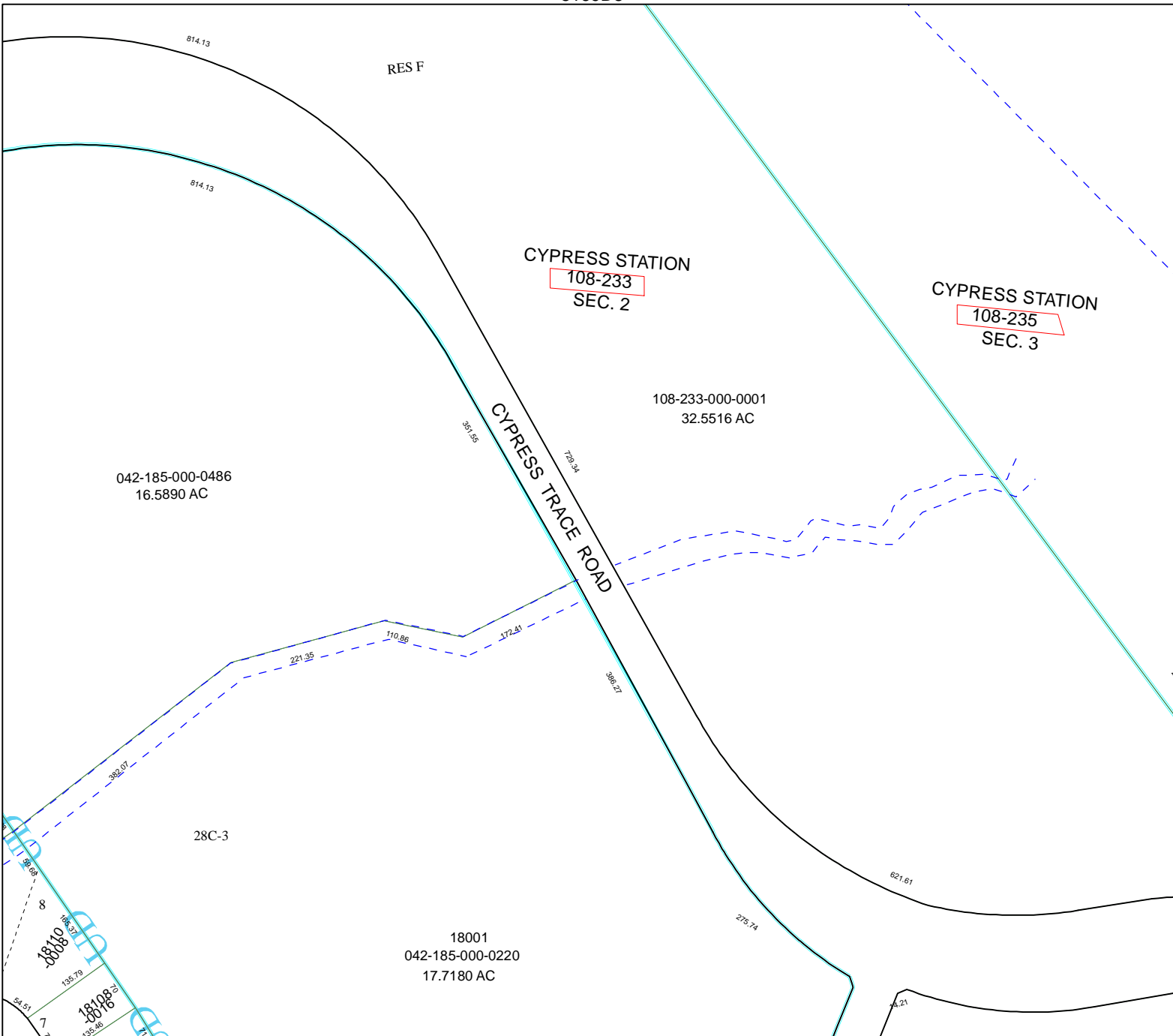
FACET
5169D

1	2	3	4
5	6	7	8
9	10	11	12

5168B4

5169D11

5269C9



28C-3

18001
042-185-000-0220
17.7180 AC

621.61

275.74

369.21

172.41

110.86

221.35

135.79

181.08

54.51

108.51

58.84

58.84

58.84

58.84

58.84

58.84

58.84

58.84

58.84

58.84

58.84

58.84

58.84

58.84

58.84

58.84

58.84

58.84

135.79

135.79

135.79

135.79

135.79

135.79

135.79

135.79

135.79

135.79

135.79

135.79

135.79

135.79

135.79

135.79

135.79

135.79

135.79

135.79

135.79

135.79

135.79

135.79

135.79

135.79

135.79

135.79

135.79

135.79

135.79

135.79

135.79

135.79

135.79

135.79

135.79

135.79

135.79

135.79

135.79

135.79

135.79

135.79

135.79

135.79

135.79

135.79

135.79

135.79

135.79

135.79

135.79

135.79

135.79

135.79

135.79

135.79

135.79

135.79

135.79

135.79

135.79

135.79

135.79

135.79

135.79

135.79

135.79

135.79

135.79

135.79

135.79

135.79

135.79

135.79

135.79

135.79

135.79

135.79

135.79

135.79

135.79

135.79

135.79

135.79

135.79

135.79

135.79

135.79

135.79

135.79

135.79

135.79

135.79

135.79

135.79

135.79

135.79

135.79

135.79

135.79

135.79

135.79

135.79

135.79

135.79

135.79

135.79

135.79

135.79

135.79

135.79

135.79

135.79

135.79

135.79

135.79

135.79

135.79

135.79

135.79

135.79

135.79

135.79

135.79

135.79

135.79

135.79

135.79

135.79

135.79

135.79

135.79

135.79

135.79

135.79

135.79

135.79

135.79

135.79

135.79

135.79

135.79

135.79

135.79

135.79

135.79

135.79

135.79

135.79

135.79

135.79

135.79

135.79

135.79

135.79

135.79

135.79

135.79

135.79

135.79

135.79

135.79

135.79

135.79

135.79

135.79

135.79

135.79

135.79

135.79

135.79

135.79

135.79

135.79

135.79

135.79

135.79

135.79

135.79

135.79

135.79

135.79

135.79

135.79

135.79

135.79

135.79

135.79

135.79

135.79

135.79

135.79

135.79

135.79

135.79

135.79

135.79

135.79

135.79

135.79

135.79

135.79

135.79

135.79

135.79

135.79

135.79

135.79

135.79

135.79

135.79

135.79

135.79

135.79

135.79

135.79

135.79

135.79

135.79

135.79

135.79

135.79

135.79

135.79

135.79

135.79

135.79

135.79

135.79

135.79

135.79

135.79

135.79

135.79

135.79

135.79

135.79

135.79

135.79

135.79

135.79

135.79

135.79

135.79

135.79

135.79

135.79

135.79

135.79