

5166D12

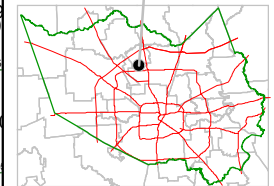
Harris County Appraisal District



0 100 200
PUBLICATION DATE:
1/12/2012

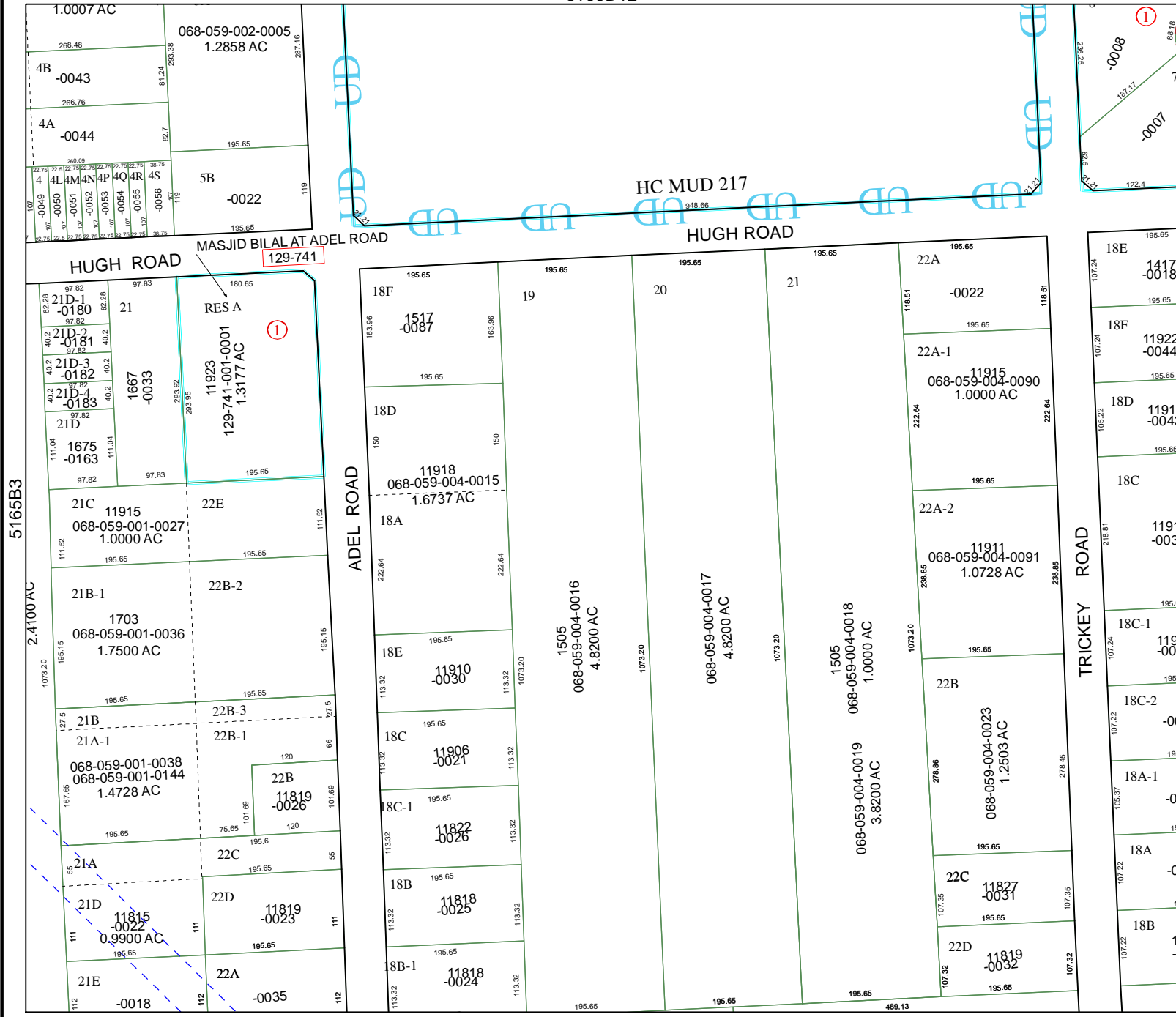
Geospatial or map data maintained by the Harris County Appraisal District is for informational purposes and may not have been prepared for or be suitable for legal, engineering, or surveying purposes. It does not represent an on-the-ground survey and only represents the approximate location of property boundaries.

MAP LOCATION



FACET 5165B

1	2	3	4
5	6	7	8
9	10	11	12



5165B8

5165B3

2.4100 AC

1073.20

127.5

107.32

112

1.0007 AC

268.48

266.76

260.09

22.79

22.79

22.79

22.79

22.79

22.79

068-059-002-0005
1.2858 AC

81.24

195.65

195.65

195.65

195.65

195.65

195.65

195.65

195.65

195.65

195.65

195.65

195.65

195.65

195.65

4B -0043

4A -0044

4L -0050

4M -0051

4N -0052

4P -0053

4Q -0054

4R -0055

4S -0056

5B -0022

119

119

119

119

119

119

18F -1517-0087

19

20

21

22A -0022

22A-1

22A-2

22B

22C

22D

22B-1

22B-2

22B-3

22C

22D

22A

18E -11910-0030

18D

18C

18C-1

18C-2

18A-1

18A

18B

18B-1

18E

18F

18G

18H

18I

18J

18K

11918
068-059-004-0015
1.6737 AC

11915
068-059-004-0090
1.0000 AC

11911
068-059-004-0091
1.0728 AC

11911
068-059-004-0023
1.2503 AC

11827
-0031

11819
-0032

11819
-0023

11818
-0025

11818
-0024

11918
068-059-004-0015
1.6737 AC

11915
068-059-004-0090
1.0000 AC

11911
068-059-004-0091
1.0728 AC

11911
068-059-004-0023
1.2503 AC

11827
-0031

11819
-0032

11819
-0023

1505
068-059-004-0016
4.8200 AC

1505
068-059-004-0017
4.8200 AC

1505
068-059-004-0018
1.0000 AC

1505
068-059-004-0019
3.8200 AC

1505
068-059-004-0020
1.0000 AC

1505
068-059-004-0021
1.2503 AC

1505
068-059-004-0022
1.2503 AC

1505
068-059-004-0023
1.2503 AC

1505
068-059-004-0024
1.2503 AC

1505
068-059-004-0025
1.2503 AC

1505
068-059-004-0026
1.2503 AC

1505
068-059-004-0027
1.2503 AC

1505
068-059-004-0028
1.2503 AC

1505
068-059-004-0029
1.2503 AC

1505
068-059-004-0030
1.2503 AC

1505
068-059-004-0031
1.2503 AC

11918
068-059-004-0015
1.6737 AC

11915
068-059-004-0090
1.0000 AC

11911
068-059-004-0091
1.0728 AC

11911
068-059-004-0023
1.2503 AC

11827
-0031

11819
-0032

11819
-0023

11818
-0025

11818
-0024

11918
068-059-004-0015
1.6737 AC

11915
068-059-004-0090
1.0000 AC

11911
068-059-004-0091
1.0728 AC

11911
068-059-004-0023
1.2503 AC

11827
-0031

11819
-0032

11819
-0023

1505
068-059-004-0016
4.8200 AC

1505
068-059-004-0017
4.8200 AC

1505
068-059-004-0018
1.0000 AC

1505
068-059-004-0019
3.8200 AC

1505
068-059-004-0020
1.0000 AC

1505
068-059-004-0021
1.2503 AC

1505
068-059-004-0022
1.2503 AC

1505
068-059-004-0023
1.2503 AC

1505
068-059-004-0024
1.2503 AC

1505
068-059-004-0025
1.2503 AC

1505
068-059-004-0026
1.2503 AC

1505
068-059-004-0027
1.2503 AC

1505
068-059-004-0028
1.2503 AC

1505
068-059-004-0029
1.2503 AC

1505
068-059-004-0030
1.2503 AC

1505
068-059-004-0031
1.2503 AC

11918
068-059-004-0015
1.6737 AC

11915
068-059-004-0090
1.0000 AC

11911
068-059-004-0091
1.0728 AC

11911
068-059-004-0023
1.2503 AC

11827
-0031

11819
-0032

11819
-0023

11818
-0025

11818
-0024

11918
068-059-004-0015
1.6737 AC

11915
068-059-004-0090
1.0000 AC

11911
068-059-004-0091
1.0728 AC

11911
068-059-004-0023
1.2503 AC

11827
-0031

11819
-0032

11819
-0023

1505
068-059-004-0016
4.8200 AC

1505
068-059-004-0017
4.8200 AC

1505
068-059-004-0018
1.0000 AC

1505
068-059-004-0019
3.8200 AC

1505
068-059-004-0020
1.0000 AC

1505
068-059-004-0021
1.2503 AC

1505
068-059-004-0022
1.2503 AC

1505
068-059-004-0023
1.2503 AC

1505
068-059-004-0024
1.2503 AC

1505
068-059-004-0025
1.2503 AC

1505
068-059-004-0026
1.2503 AC

1505
068-059-004-0027
1.2503 AC

1505
068-059-004-0028
1.2503 AC

1505
068-059-004-0029
1.2503 AC

1505
068-059-004-0030
1.2503 AC

1505
068-059-004-0031
1.2503 AC

11918
068-059-004-0015
1.6737 AC

11915
068-059-004-0090
1.0000 AC

11911
068-059-004-0091
1.0728 AC

11911
068-059-004-0023
1.2503 AC

11827
-0031

11819
-0032

11819
-0023

11818
-0025

11818
-0024

11918
068-059-004-0015
1.6737 AC

11915
068-059-004-0090
1.0000 AC

11911
068-059-004-0091
1.0728 AC

11911
068-059-004-0023
1.2503 AC

11827
-0031

11819
-0032

11819
-0023

1505
068-059-004-0016
4.8200 AC

1505
068-059-004-0017
4.8200 AC

1505
068-059-004-0018
1.0000 AC

1505
068-059-004-0019
3.8200 AC

1505
068-059-004-0020
1.0000 AC

1505
068-059-004-0021
1.2503 AC

1505
068-059-004-0022
1.2503 AC

1505
068-059-004-0023
1.2503 AC

1505
068-059-004-0024
1.2503 AC

1505
068-059-004-0025
1.2503 AC

1505
068-059-004-0026
1.2503 AC

1505
068-059-004-0027
1.2503 AC

1505
068-059-004-0028
1.2503 AC

1505
068-059-004-0029
1.2503 AC

1505
068-059-004-0030
1.2503 AC

1505
068-059-004-0031
1.2503 AC

11918
068-059-004-0015
1.6737 AC

11915
068-059-004-0090
1.0000 AC

11911
068-059-004-0091
1.0728 AC

11911
068-059-004-0023
1.2503 AC

11827
-0031

11819
-0032

11819
-0023

11818
-0025

11818
-0024

11918
068-059-004-0015
1.6737 AC

11915
068-059-004-0090
1.0000 AC

11911
068-059-004-0091
1.0728 AC

11911
068-059-004-0023
1.2503 AC