

Harris County Appraisal District

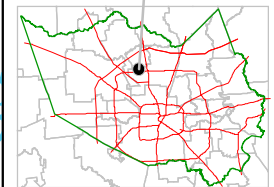


0 100 200

PUBLICATION DATE:
8/15/2011

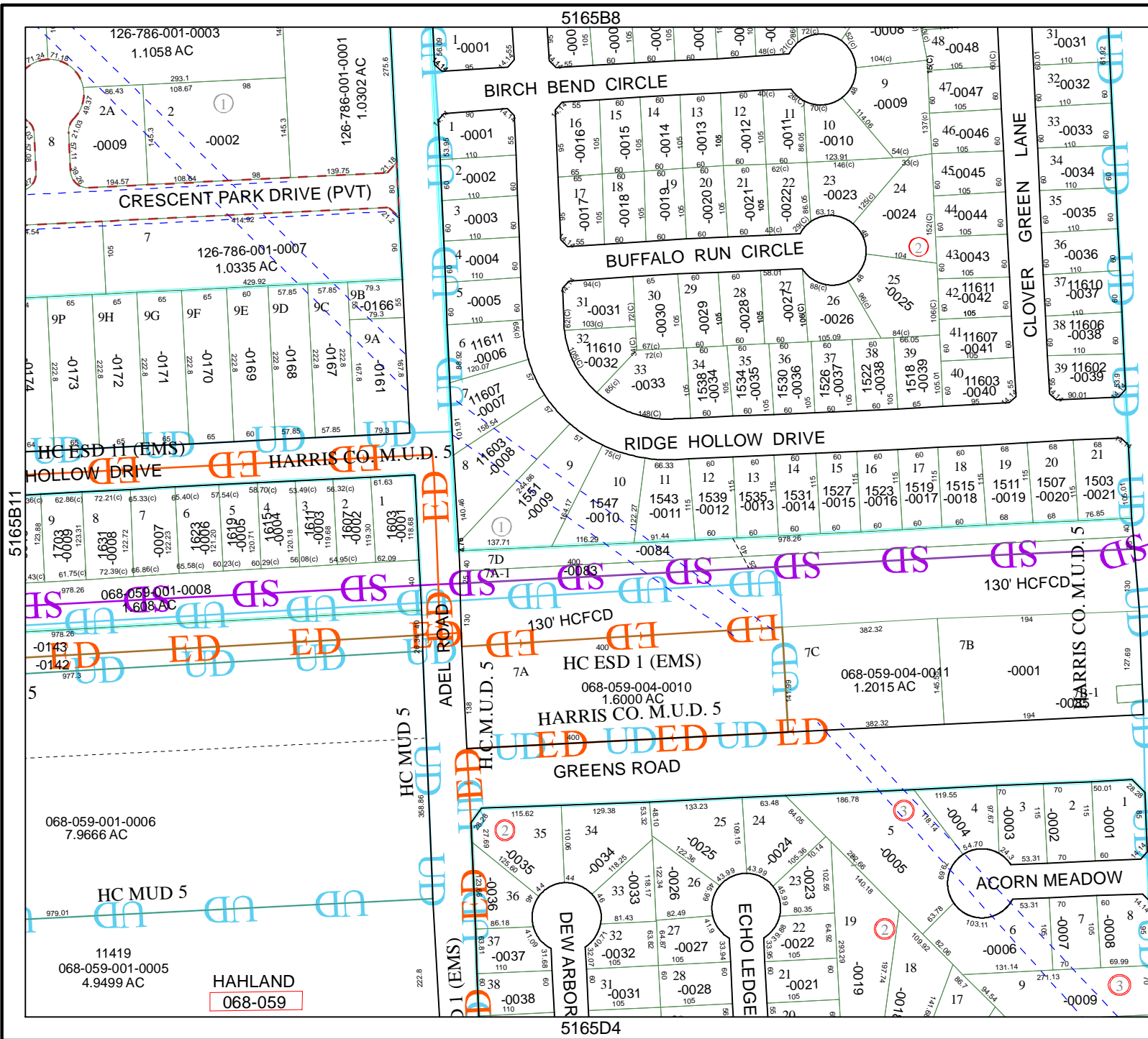
Geospatial or map data maintained by the Harris County Appraisal District is for informational purposes and may not be suitable for legal, engineering, or surveying purposes. It does not represent an on-the-ground survey and only represents the approximate location of property boundaries.

MAP LOCATION



FACET 5165B

1	2	3	4
5	6	7	8
9	10	11	12



HAHLAND
068-059

5165D4

5165B11

5265A9

