

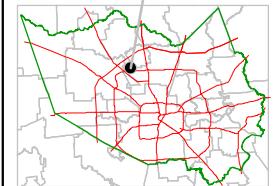
Harris County Appraisal District



0 100 200
PUBLICATION DATE:
 11/17/2011

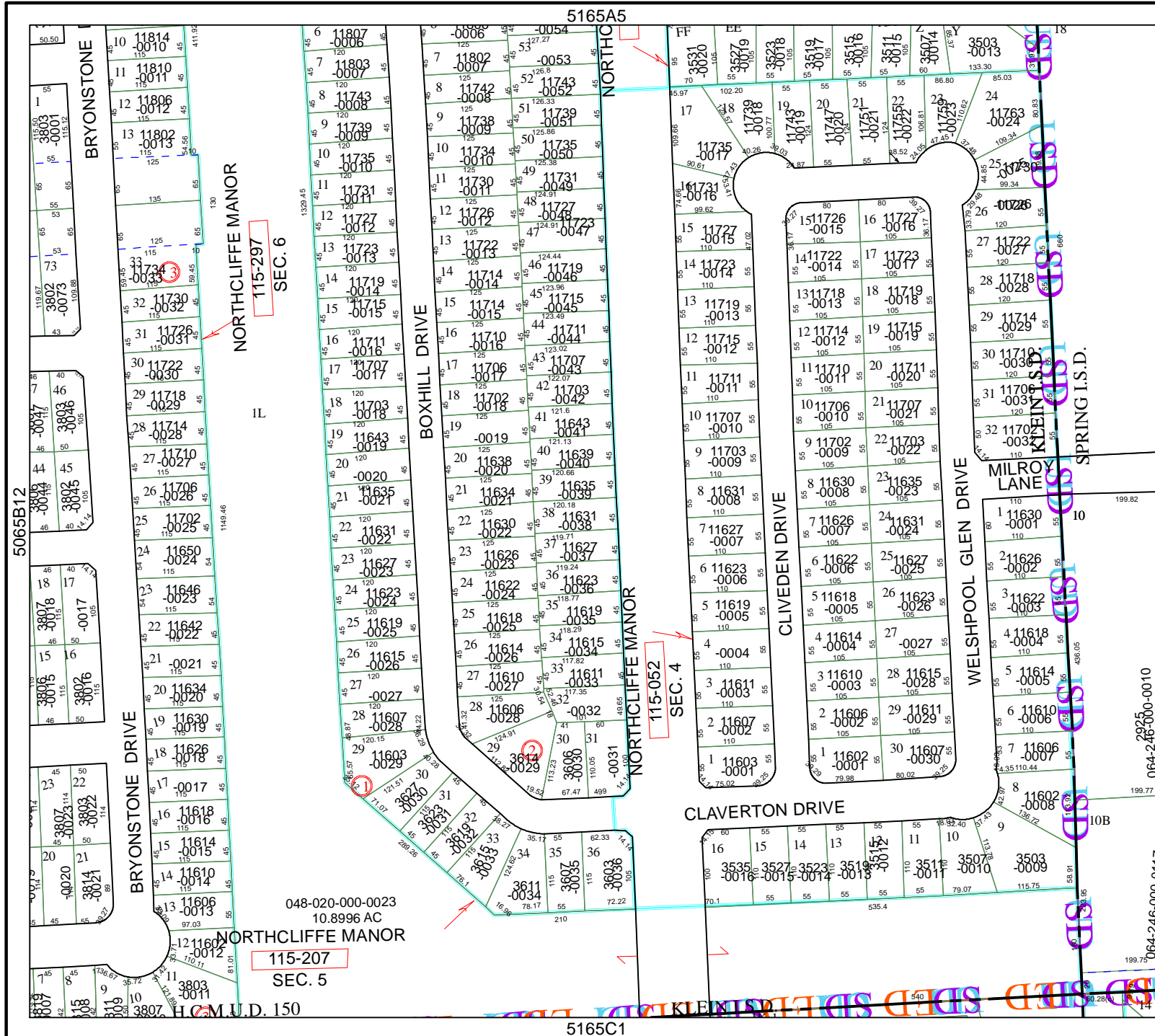
Geospatial or map data maintained by the Harris County Appraisal District is for informational purposes and may not have been prepared for or be suitable for legal, engineering, or surveying purposes. It does not represent an on-the-ground survey and only represents the approximate location of property boundaries.

MAP LOCATION



FACET 5165A

1	2	3	4
5	6	7	8
9	10	11	12



5165A10

064-246-000-0010

064-246-000-0117

5165C1

048-020-000-0023
 10.8996 AC

115-207
 SEC. 5

5065B12

048-020-000-0023
 10.8996 AC

115-297
 SEC. 6