

Harris County Appraisal District



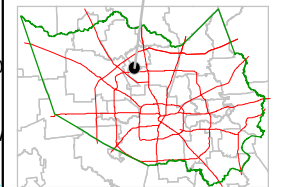
0 100 200

PUBLICATION DATE:
8/15/2011

Geospatial or map data maintained by the Harris County Appraisal District is for informational purposes and may not be prepared for or be suitable for legal, engineering, or surveying purposes. It does not represent an on-the-ground survey and only represents the approximate location of property boundaries.

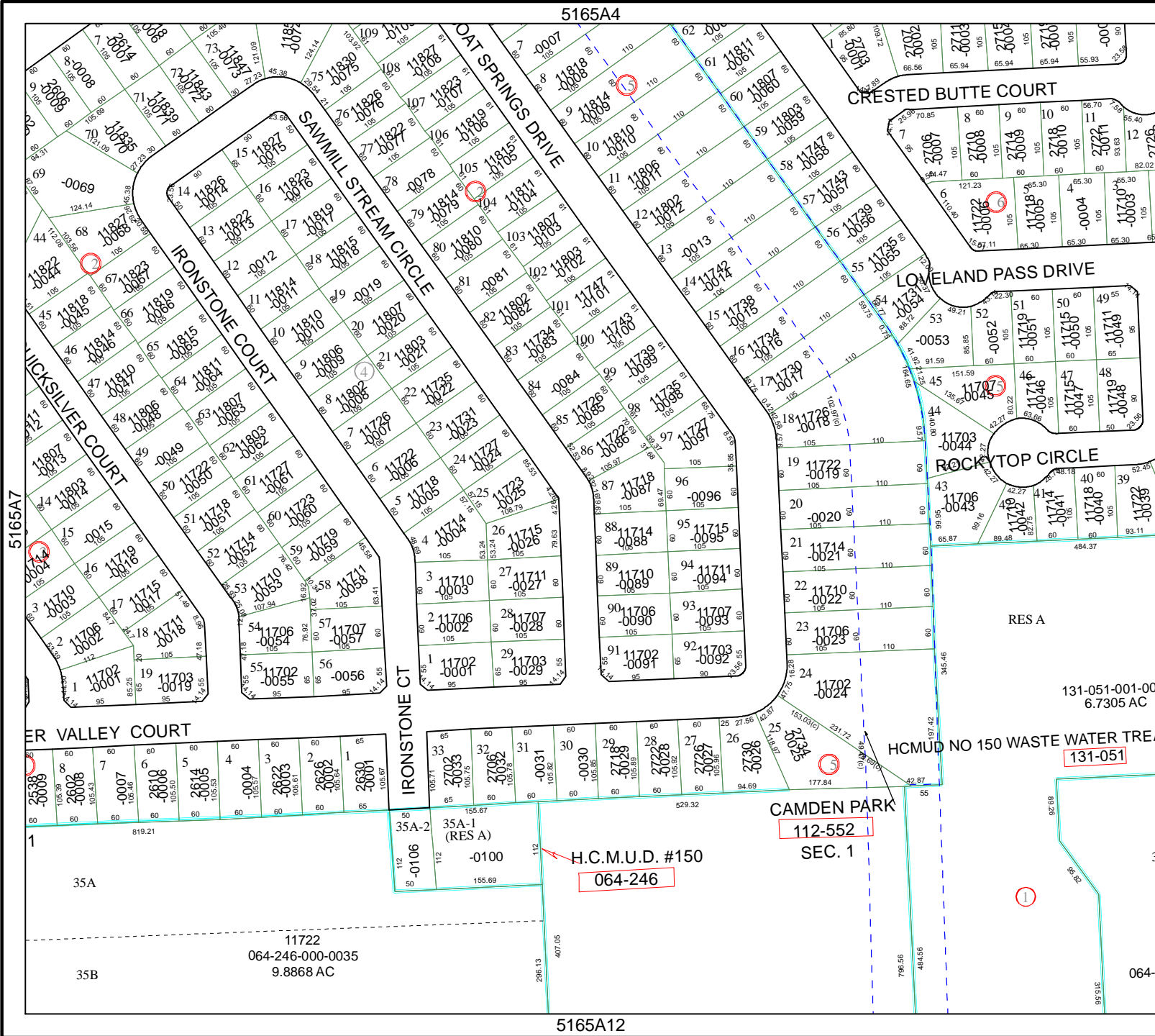


MAP LOCATION



FACET 5165A

1	2	3	4
5	6	7	8
9	10	11	12



5165A7

5165A4

5165A12

5165B5

RES A

131-051-001-00
6.7305 AC

131-051

CAMDEN PARK
112-552
SEC. 1

H.C.M.U.D. #150
064-246

11722
064-246-000-0035
9.8868 AC

064-