

Harris County Appraisal District

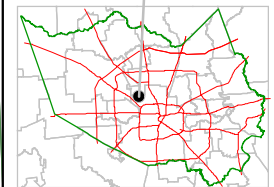


0 100 200
PUBLICATION DATE:
 1/30/2012

Geospatial or map data maintained by the Harris County Appraisal District is for informational purposes and may not have been prepared for or be suitable for legal, engineering, or surveying purposes. It does not represent an on-the-ground survey and only represents the approximate location of property boundaries.

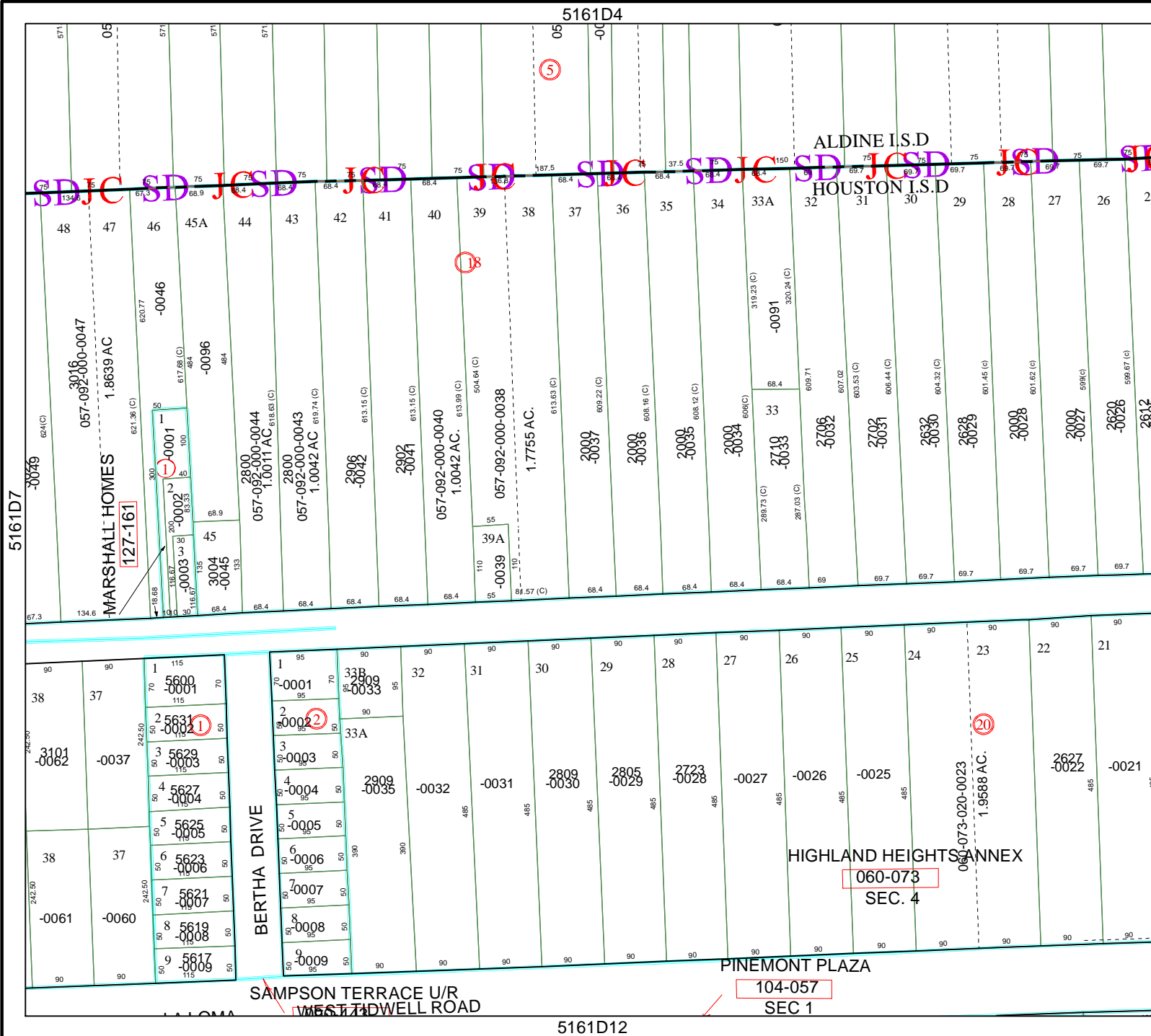


MAP LOCATION



FACET 5161D

1	2	3	4
5	6	7	8
9	10	11	12



5161D4

ALDINE I.S.D
 HOUSTON I.S.D

MARSHALL HOMES
 127-161

BERTHA DRIVE

HIGHLAND HEIGHTS ANNEX
 060-073
 SEC. 4

SAMPSON TERRACE U/R
 WESTLIDWELL ROAD

PINEMONT PLAZA
 104-057
 SEC 1

5161D12

5261C5