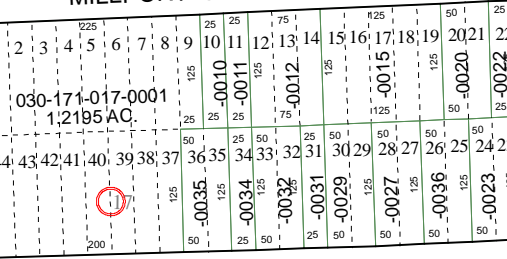
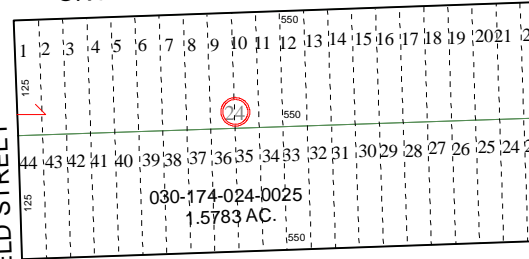


5161C5

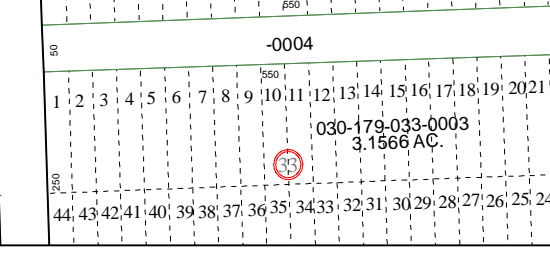
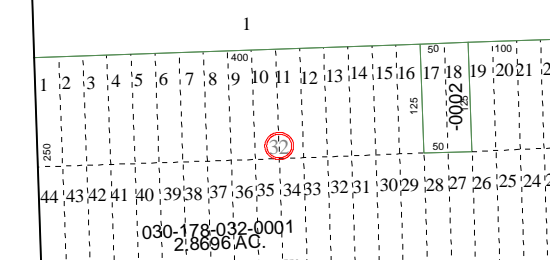
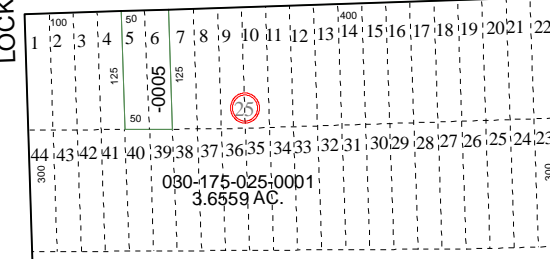
MILLPORT STREET



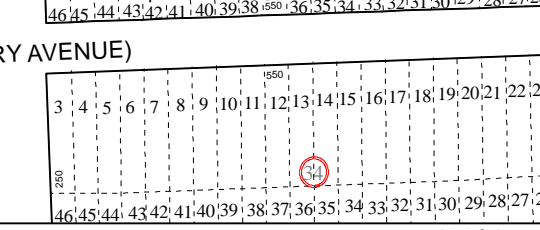
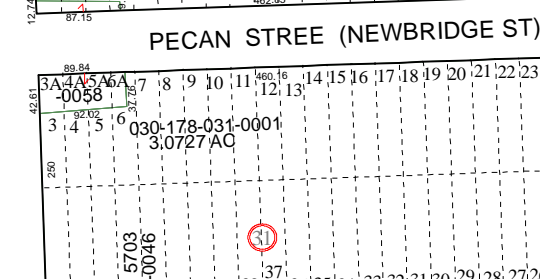
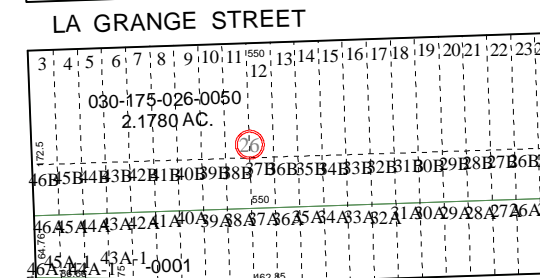
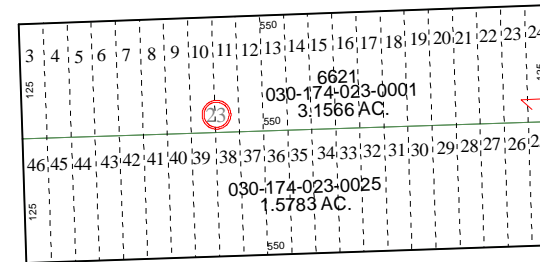
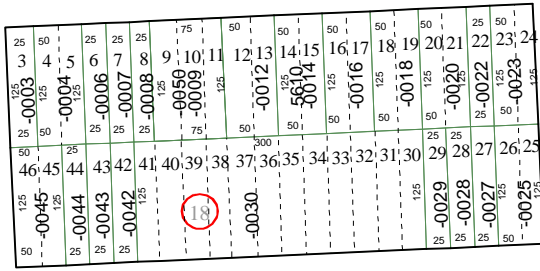
GROVECREST STREET



LOCKFIELD STREET



5161C10

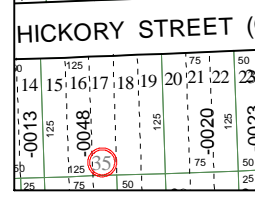
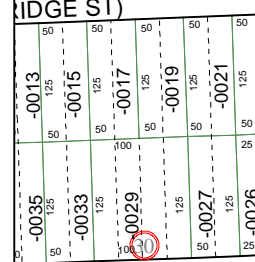
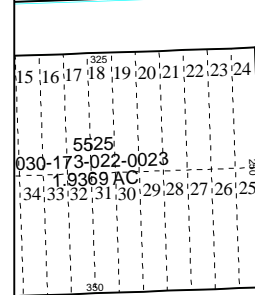
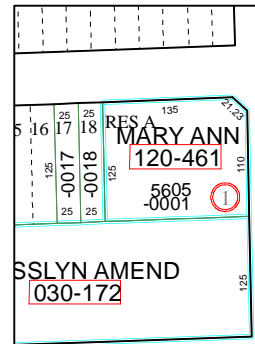


5160A1

BINGLE ROAD

LA GRANGE STREET

PECAN STREET (NEWBRIDGE ST)



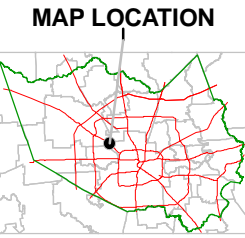
5160A1

# Harris County Appraisal District



0 100 200  
 PUBLICATION DATE:  
 9/1/2011

Geospatial or map data maintained by the Harris County Appraisal District is for informational purposes and may not be suitable for legal, engineering, or surveying purposes. It does not represent an on-the-ground survey and only represents the approximate location of property boundaries.



## FACET 5161C

1	2	3	4
5	6	7	8
9	10	11	12

