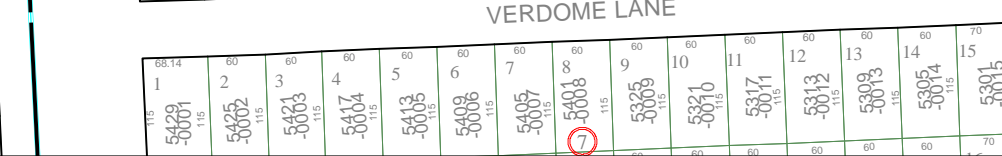
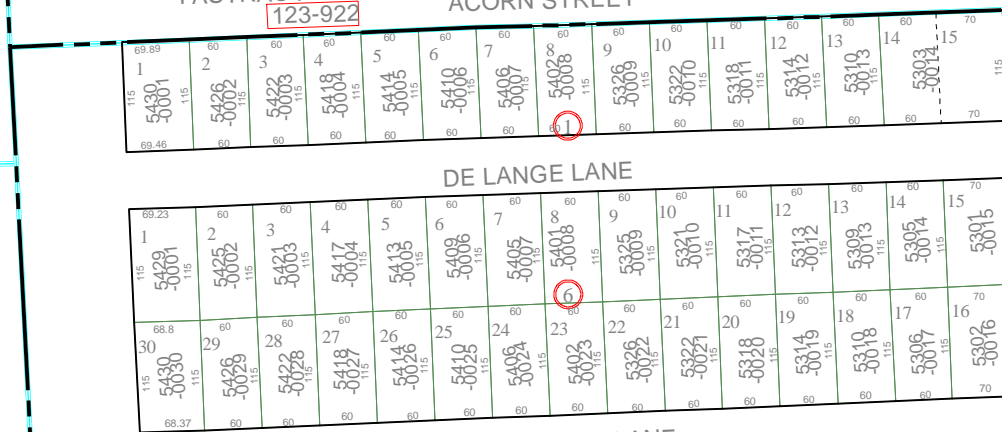
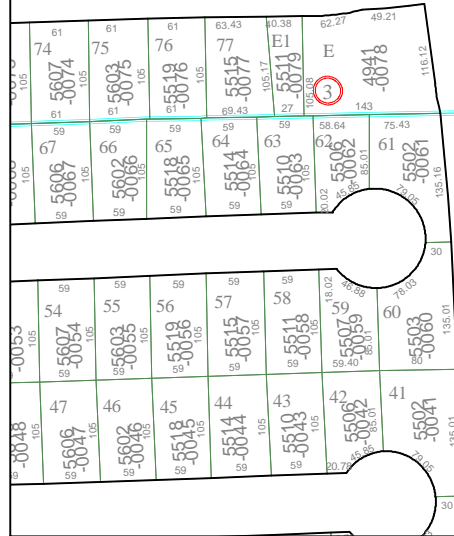
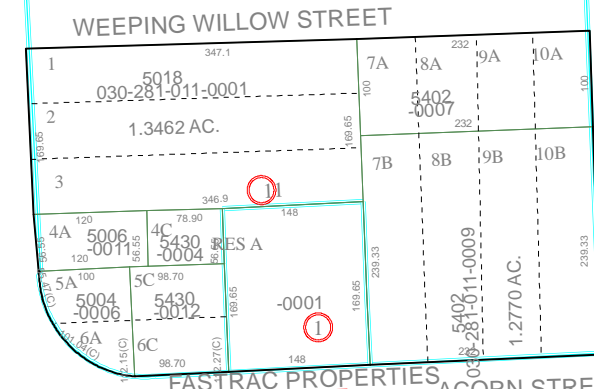
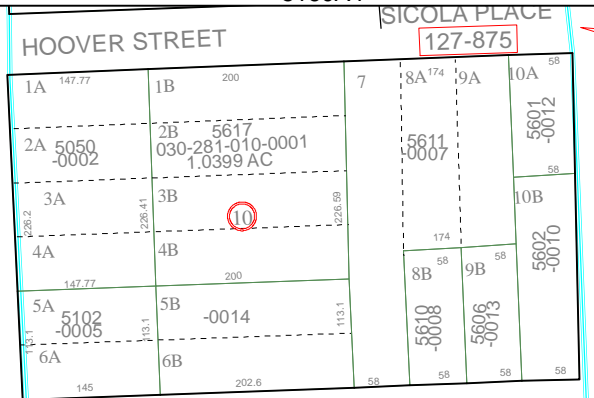
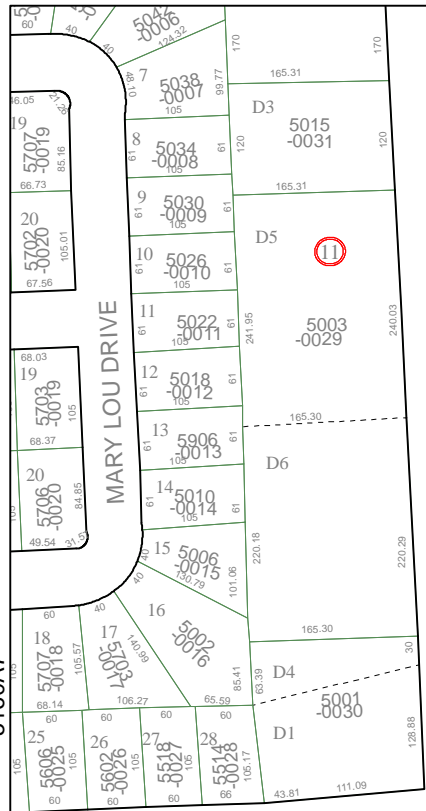


5160A4



5160A12

ROSSLYN HEIGHTS
030-281
SEC. 2

Harris County Appraisal District

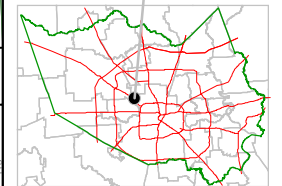


0 100 200
PUBLICATION DATE:
8/15/2011

Geospatial or map data maintained by the Harris County Appraisal District is for informational purposes and may not be prepared for or be suitable for legal, engineering, or surveying purposes. It does not represent an on-the-ground survey and only represents the approximate location of property boundaries.



MAP LOCATION



FACET 5160A

1	2	3	4
5	6	7	8
9	10	11	12

5160B5