

5160A3

HOOVER STREET

CHRYSTELL LANE

WEeping WILLOW ROAD

ACORN STREET

DE LANGE LANE

RENO STREET

FOREST PINES
097-308
SEC. 2A

FOREST PINES
096-077

5160A11

Harris County Appraisal District

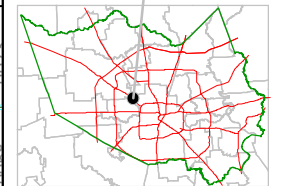


0 100 200

PUBLICATION DATE:
8/15/2011

Geospatial or map data maintained by the Harris County Appraisal District is for informational purposes and may not be suitable for legal, engineering, or surveying purposes. It does not represent an on-the-ground survey and only represents the approximate location of property boundaries.

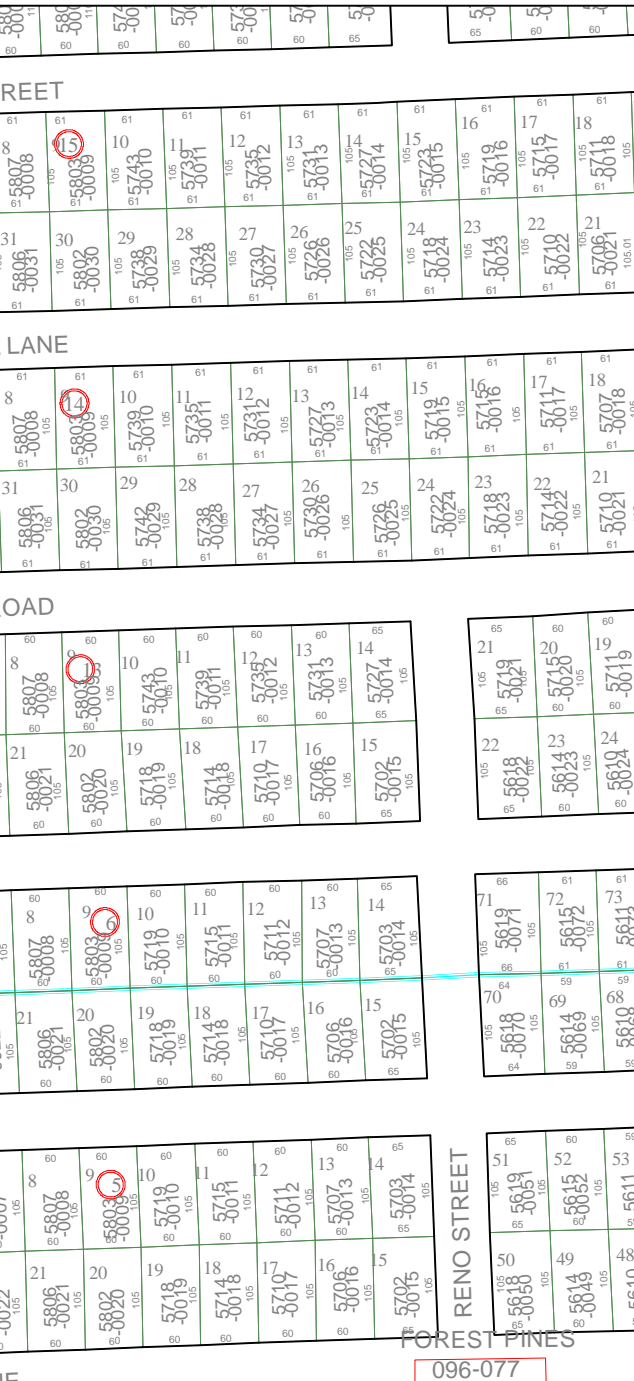
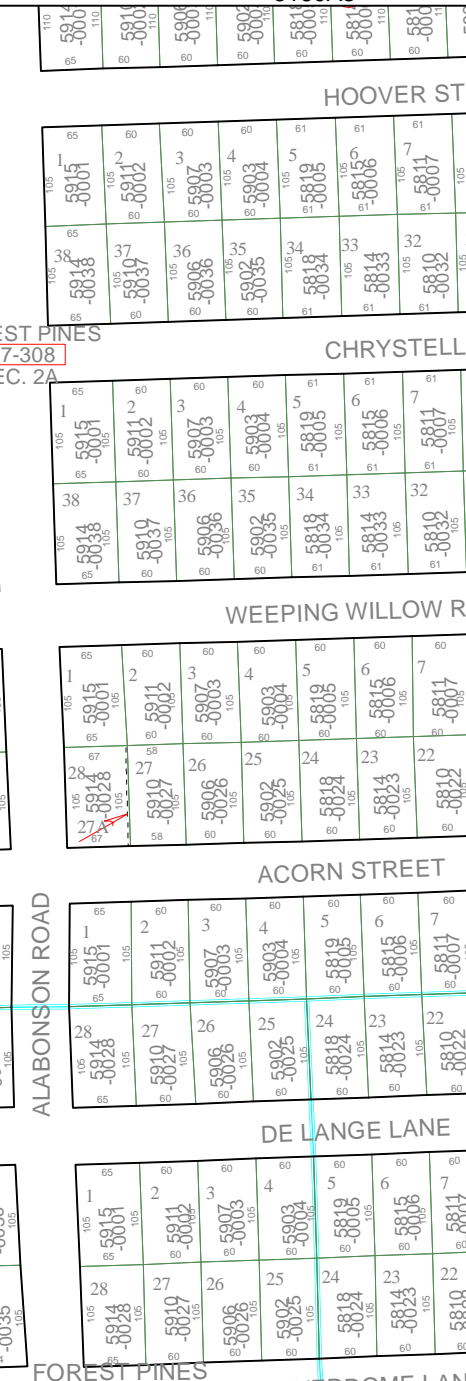
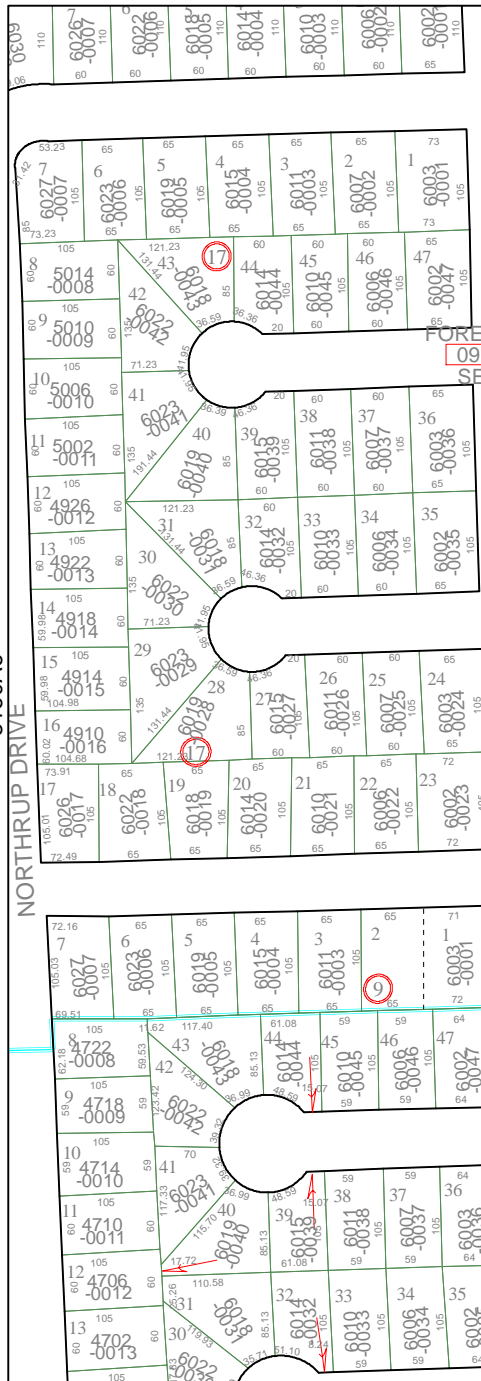
MAP LOCATION



FACET 5160A

1	2	3	4
5	6	7	8
9	10	11	12

5160A6



5160A8