

5158D6

5157B2

Harris County Appraisal District

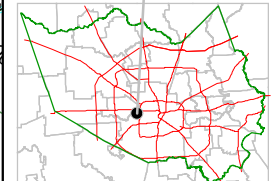


PUBLICATION DATE: 1/20/2012

Geospatial or map data maintained by the Harris County Appraisal District is for informational purposes and may not have been prepared for or be suitable for legal, engineering, or surveying purposes. It does not represent an on-the-ground survey and only represents the approximate location of property boundaries.

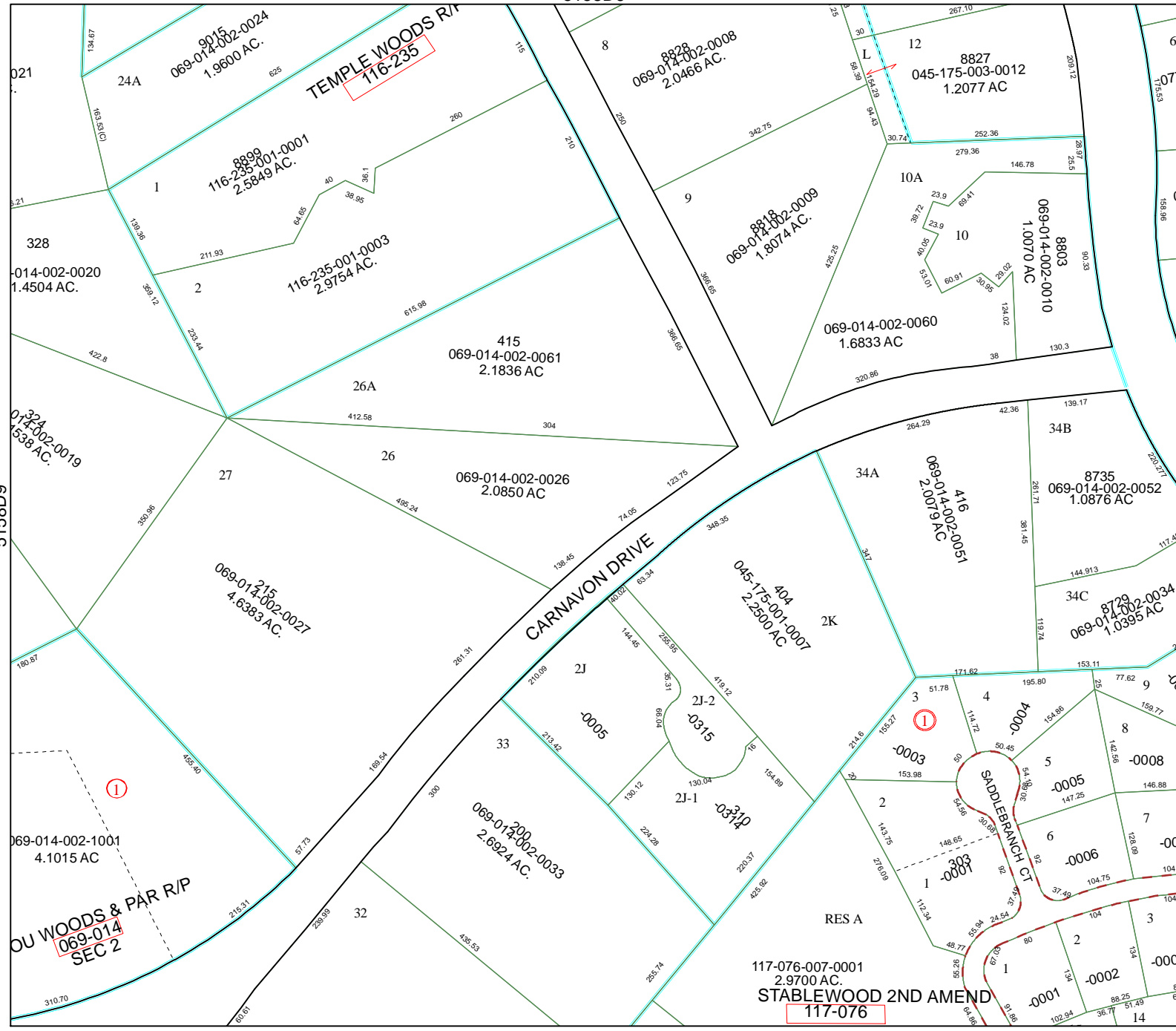


MAP LOCATION



FACET 5158D

1	2	3	4
5	6	7	8
9	10	11	12



5158D11

5158D9

WOODS & PAR R/P
069-014
SEC 2

117-076-007-0001
2.9700 AC.
STABLEWOOD 2ND AMEND
117-076