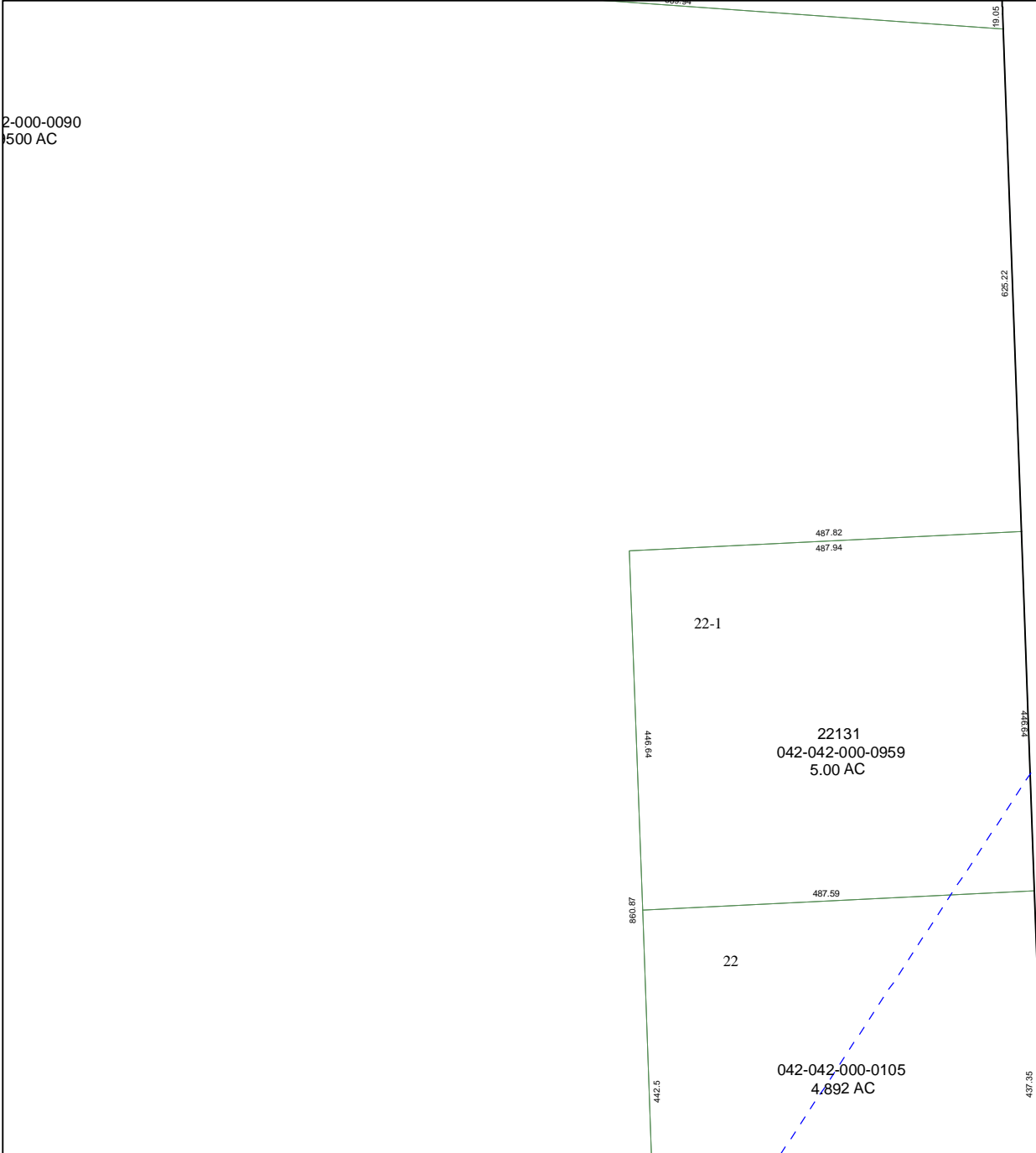


5071D2

2-000-0090
500 AC

5071D5

5071D10



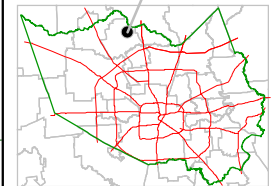
Harris County Appraisal District



0 100 200
PUBLICATION DATE:
10/3/2011

Geospatial or map data maintained by the Harris County Appraisal District is for informational purposes and may **not** have been prepared for or be suitable for legal, engineering, or surveying purposes. It does **not** represent an on-the-ground survey and only represents the approximate location of property boundaries.

MAP LOCATION



FACET 5071D

1	2	3	4
5	6	7	8
9	10	11	12

