

5071A5

Harris County Appraisal District

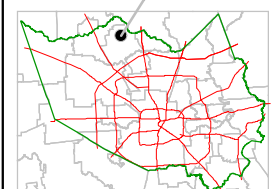


PUBLICATION DATE:
12/1/2011

Geospatial or map data maintained by the Harris County Appraisal District is for informational purposes and may **not** have been prepared for or be suitable for legal, engineering, or surveying purposes. It does **not** represent an on-the-ground survey and only represents the approximate location of property boundaries.



MAP LOCATION

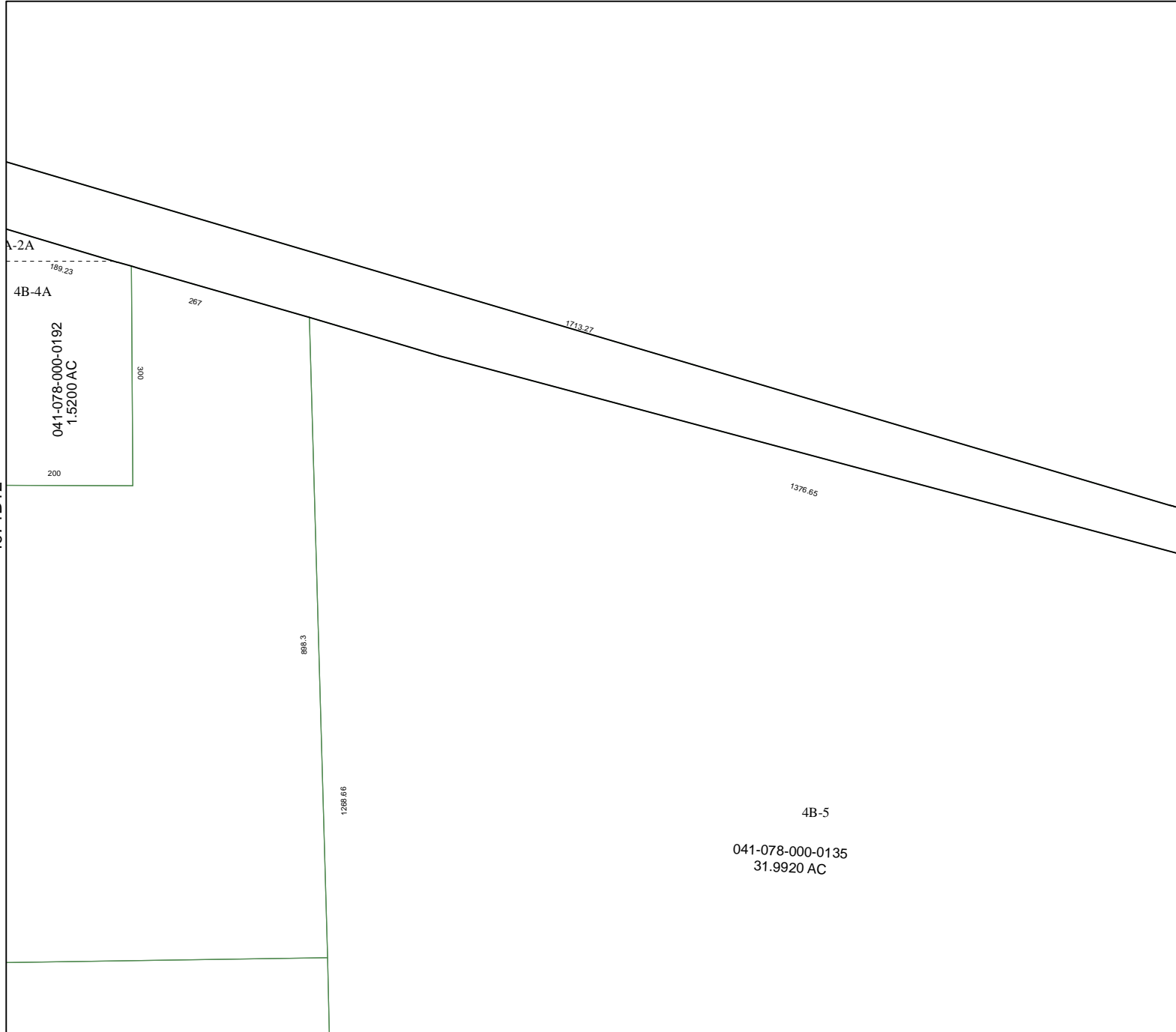


FACET 5071A

1	2	3	4
5	6	7	8
9	10	11	12

5071C1

4971B12



5071A10

041-078-000-0192
1.5200 AC

4B-5
041-078-000-0135
31.9920 AC