

Harris County Appraisal District

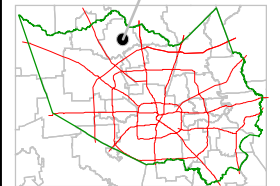


0 100 200
PUBLICATION DATE:
 8/15/2011

Geospatial or map data maintained by the Harris County Appraisal District is for informational purposes and may not be suitable for legal, engineering, or surveying purposes. It does not represent an on-the-ground survey and only represents the approximate location of property boundaries.

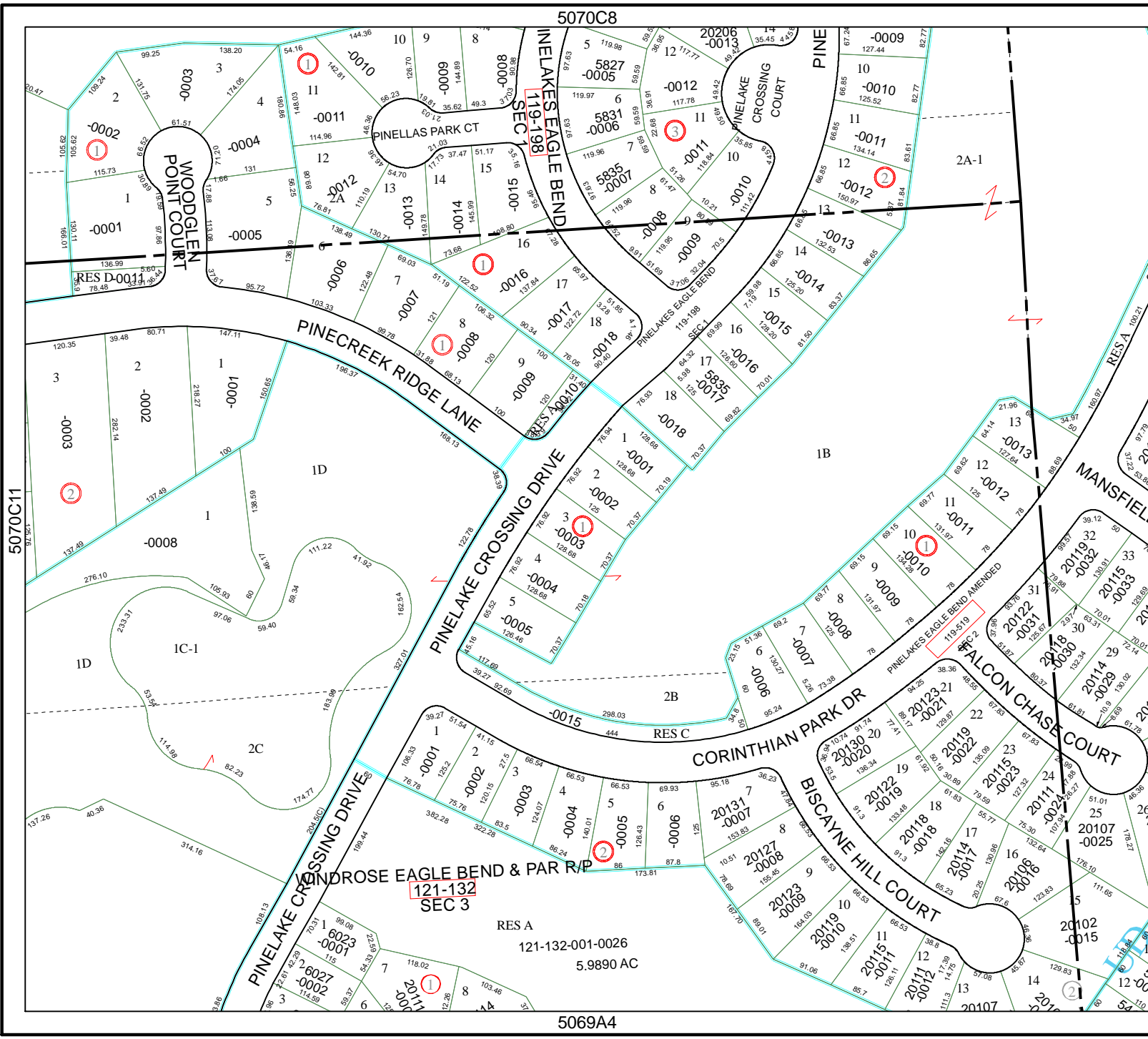


MAP LOCATION



FACET 5070C

1	2	3	4
5	6	7	8
9	10	11	12



5070C11

5070C8

5070D9

5069A4

MONROSE EAGLE BEND & PAR R/P
 121-132
 SEC 3
 RES A
 121-132-001-0026
 5.9890 AC