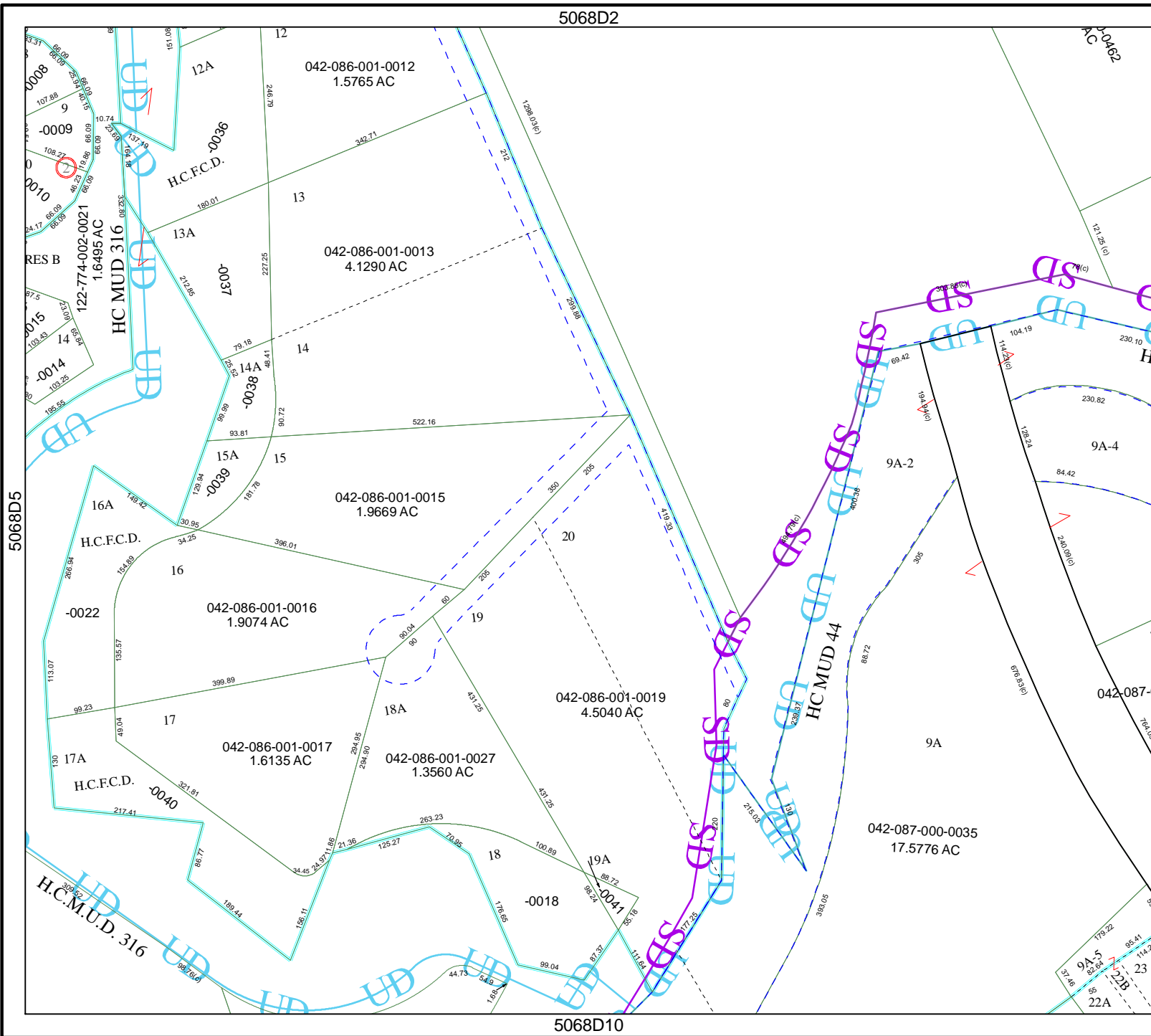


5068D2



5068D5

5068D10

Harris County Appraisal District

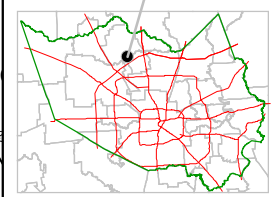


0 100 200
PUBLICATION DATE:
 8/15/2011

Geospatial or map data maintained by the Harris County Appraisal District is for informational purposes and may **not** have been prepared for or be suitable for legal, engineering, or surveying purposes. It does **not** represent an on-the-ground survey and only represents the approximate location of property boundaries.



MAP LOCATION



FACET 5068D

1	2	3	4
5	6	7	8
9	10	11	12

5068D7

50462

042-087-

9A-5
22B
23
22A