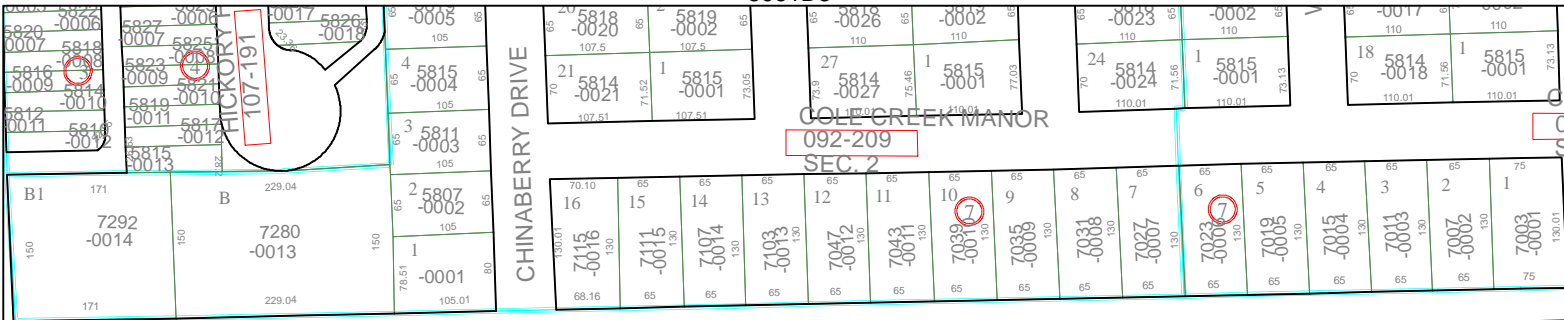
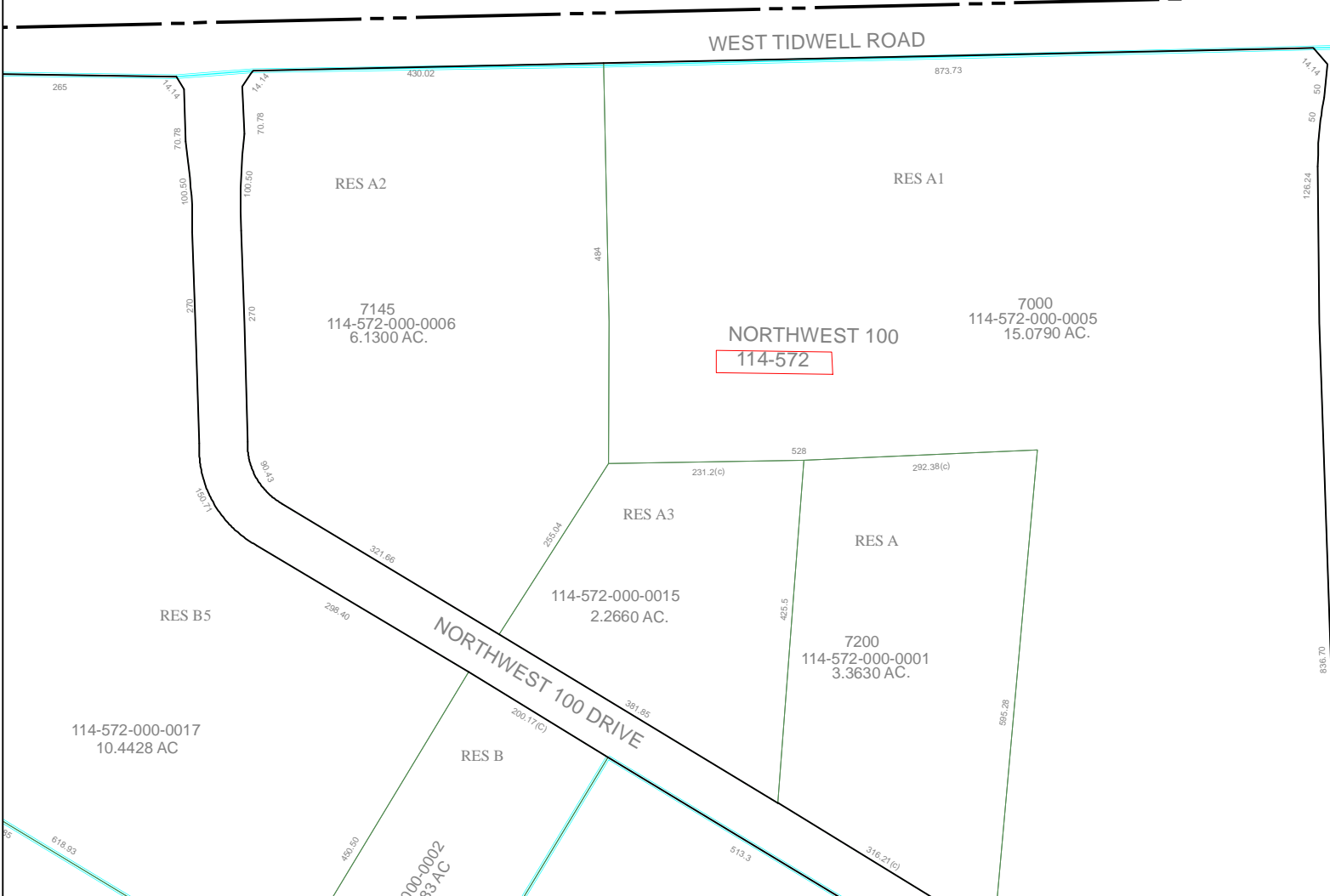


5061D3



COLLIER CREEK MANOR
092-209
SEC. 2

5061D6



5061D11

Harris County Appraisal District

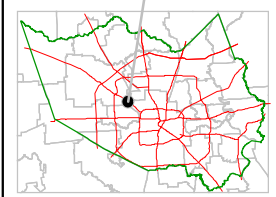


0 100 200
 PUBLICATION DATE:
 8/15/2011

Geospatial or map data maintained by the Harris County Appraisal District is for informational purposes and may not have been prepared for or be suitable for legal, engineering, or surveying purposes. It does not represent an on-the-ground survey and only represents the approximate location of property boundaries.



MAP LOCATION



FACET 5061D

1	2	3	4
5	6	7	8
9	10	11	12

5061D8