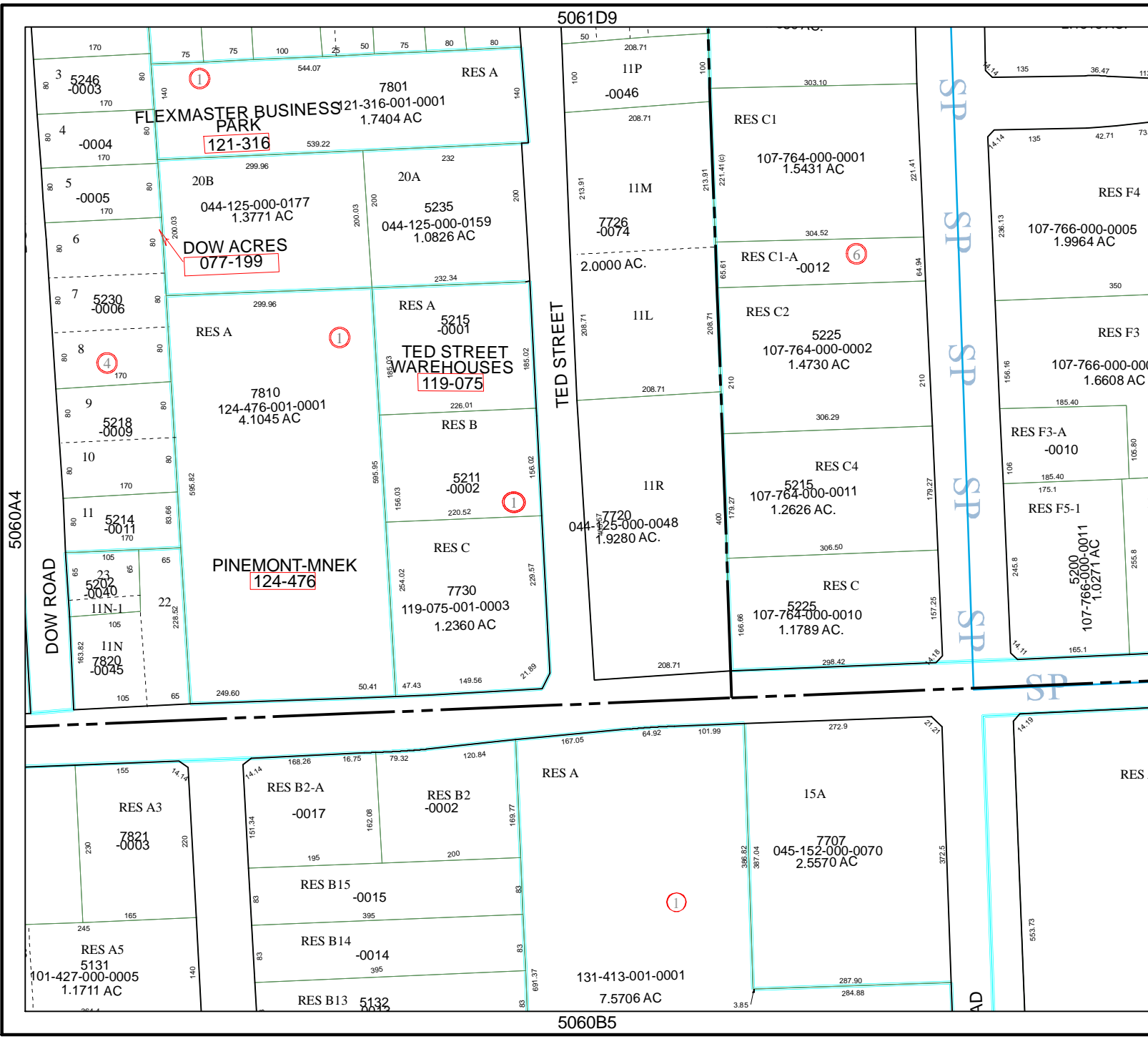


5061D9

TED STREET

5060B5



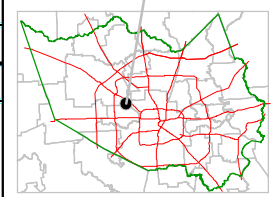
Harris County Appraisal District



0 100 200
PUBLICATION DATE:
 8/15/2011

Geospatial or map data maintained by the Harris County Appraisal District is for informational purposes and may not have been prepared for or be suitable for legal, engineering, or surveying purposes. It does not represent an on-the-ground survey and only represents the approximate location of property boundaries.

MAP LOCATION



FACET 5060B

1	2	3	4
5	6	7	8
9	10	11	12

5060A4

DOW ROAD

SP SP SP SP SP SP SP

5060B2

