

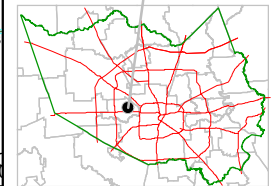
Harris County Appraisal District



0 100 200
PUBLICATION DATE:
 12/16/2011

Geospatial or map data maintained by the Harris County Appraisal District is for informational purposes and may not be suitable for legal, engineering, or surveying purposes. It does not represent an on-the-ground survey and only represents the approximate location of property boundaries.

MAP LOCATION

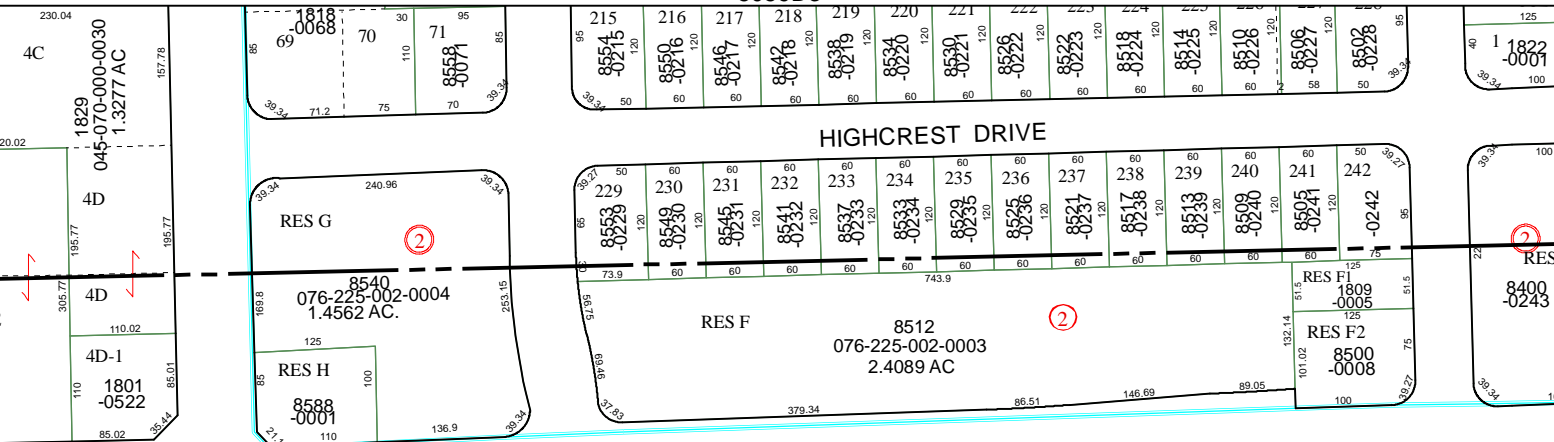


FACET 5059D

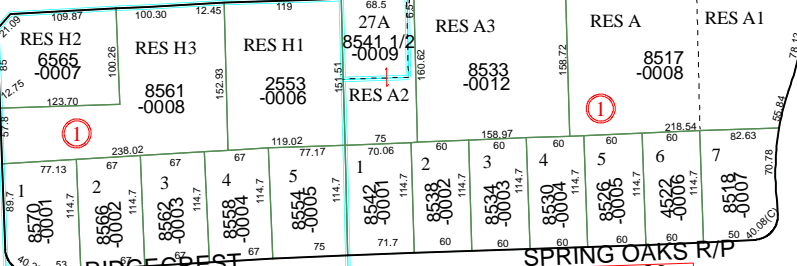
1	2	3	4
5	6	7	8
9	10	11	12

5059D3

HIGHCREST DRIVE

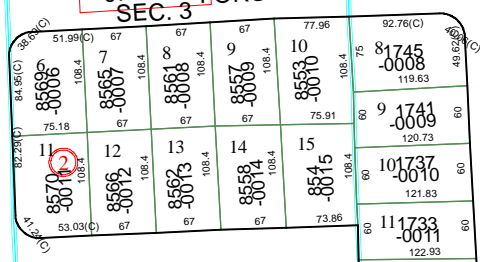


DEVELOPMENT AT LONG POINT & BINGLE ROAD
 129-077

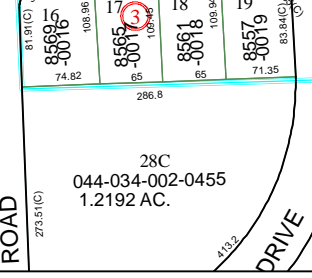
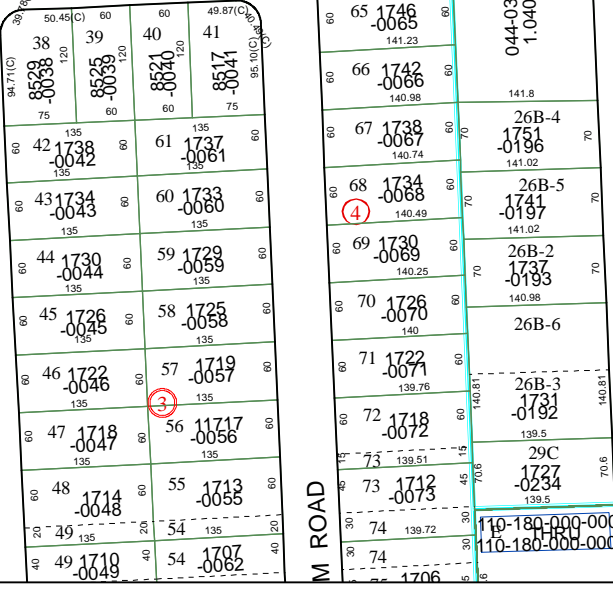


FORUM DRIVE
 SEC. 3

SPRING OAKS R/P
 079-129



HIRIDGE DRIVE



5059D11

5059D6

5059D8

