

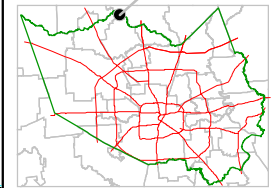
Harris County Appraisal District



0 100 200
PUBLICATION DATE:
 1/24/2012

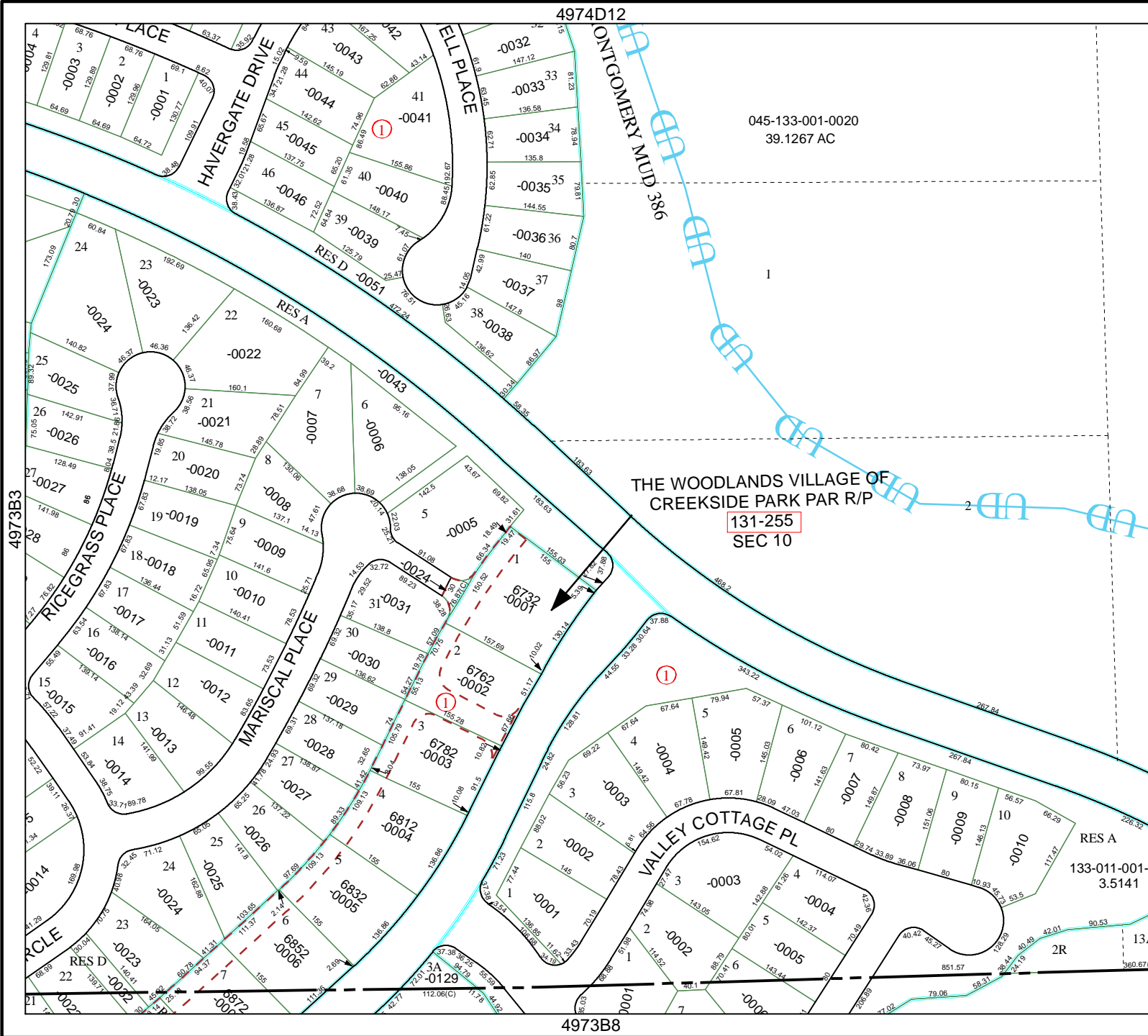
Geospatial or map data maintained by the Harris County Appraisal District is for informational purposes and may not have been prepared for or be suitable for legal, engineering, or surveying purposes. It does not represent an on-the-ground survey and only represents the approximate location of property boundaries.

MAP LOCATION



FACET 4973B

1	2	3	4
5	6	7	8
9	10	11	12



045-133-001-0020
 39.1267 AC

THE WOODLANDS VILLAGE OF CREEKSIDE PARK PAR R/P
 131-255
 SEC 10

4974D12

4973B8

4973B3

5073A1

