

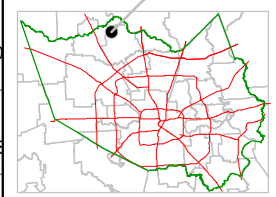
Harris County Appraisal District



0 100 200
PUBLICATION DATE:
 8/15/2011

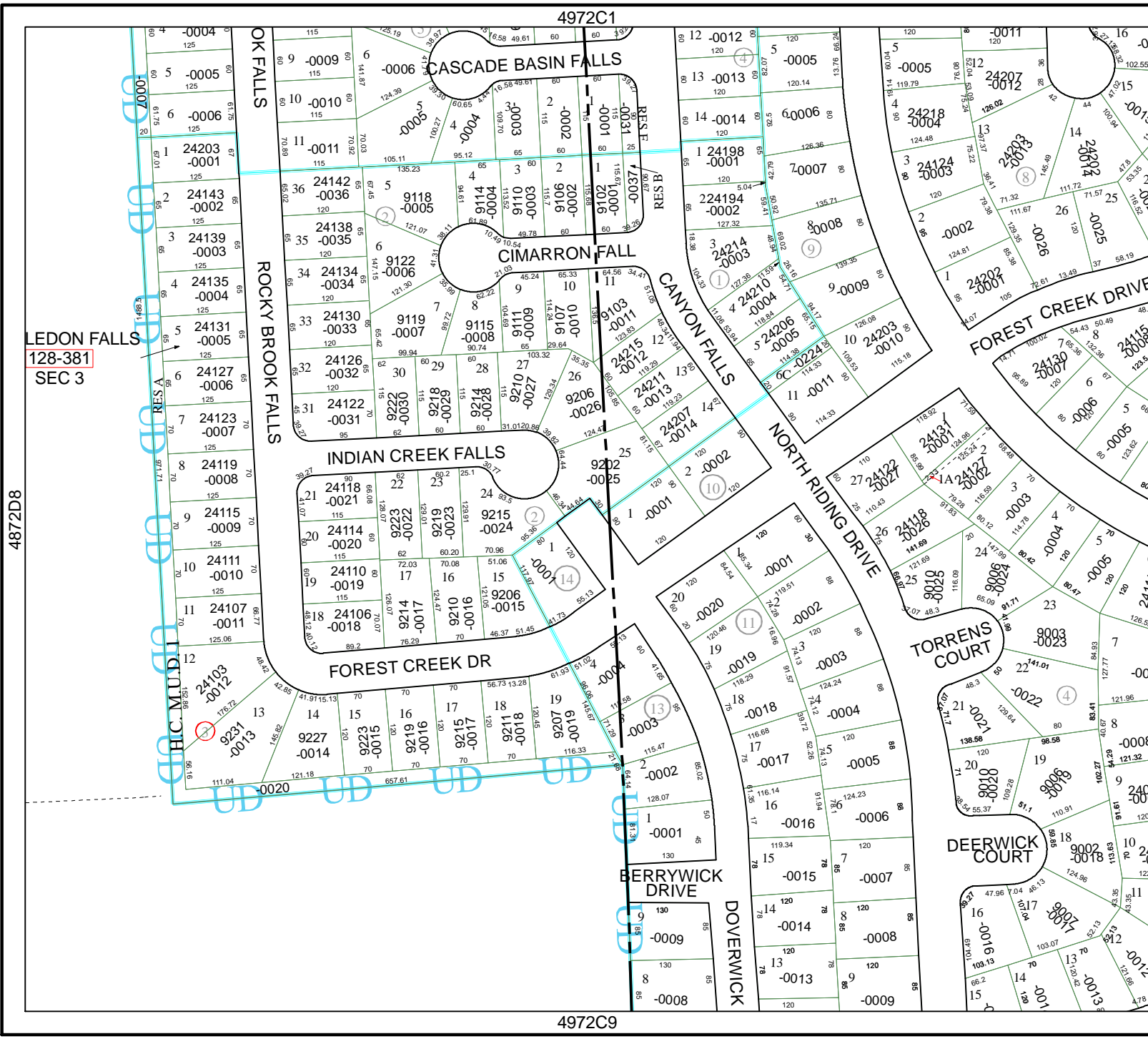
Geospatial or map data maintained by the Harris County Appraisal District is for informational purposes and may not have been prepared for or be suitable for legal, engineering, or surveying purposes. It does not represent an on-the-ground survey and only represents the approximate location of property boundaries.

MAP LOCATION



FACET 4972C

1	2	3	4
5	6	7	8
9	10	11	12



LEDON FALLS
 128-381
 SEC 3

4872D8

4972C1

4972C6

4972C9