

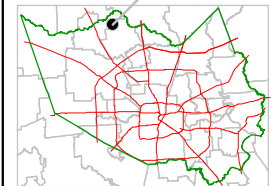
# Harris County Appraisal District



0 100 200  
 PUBLICATION DATE:  
 12/21/2011

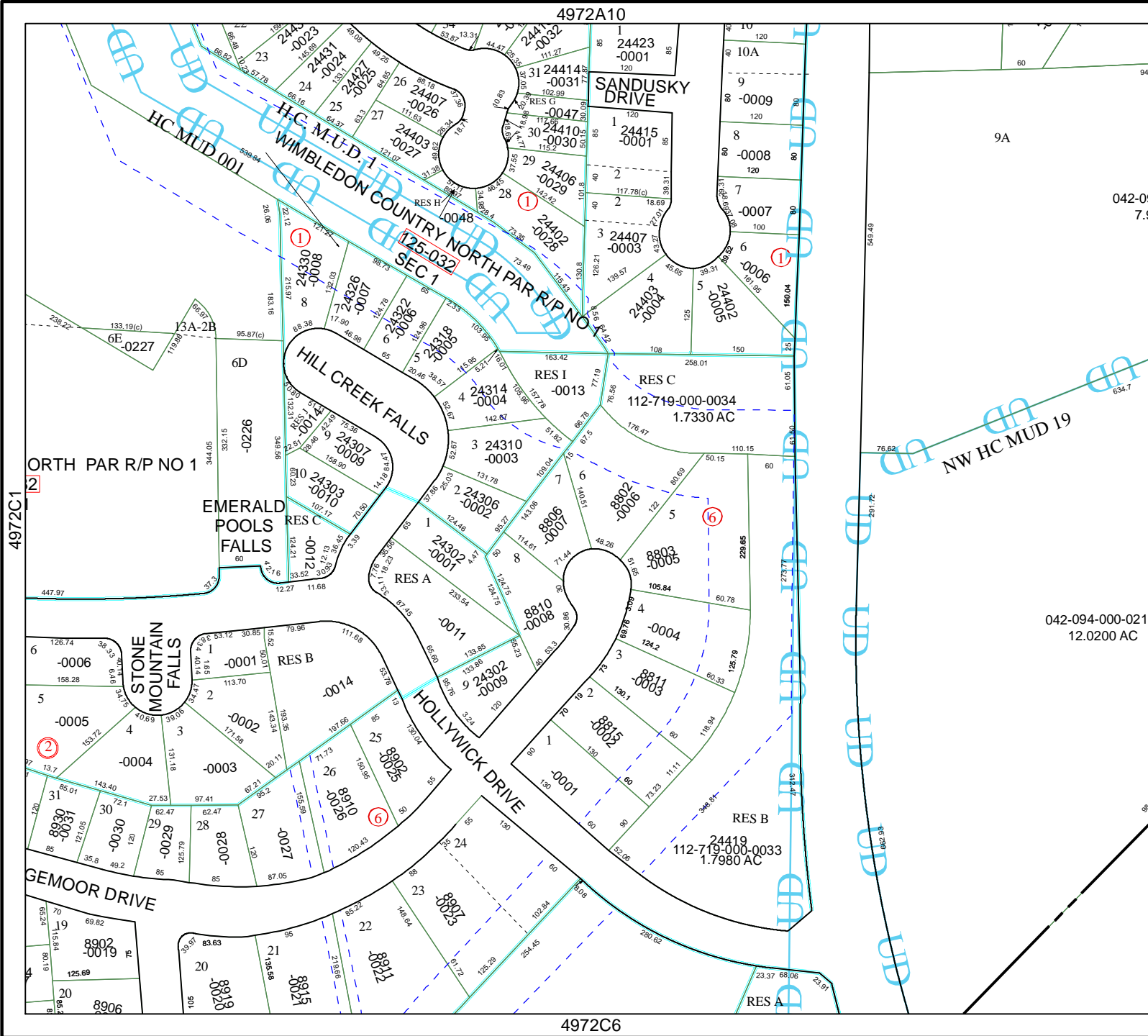
Geospatial or map data maintained by the Harris County Appraisal District is for informational purposes and may not have been prepared for or be suitable for legal, engineering, or surveying purposes. It does not represent an on-the-ground survey and only represents the approximate location of property boundaries.

### MAP LOCATION



# FACET 4972C

1	2	3	4
5	6	7	8
9	10	11	12



4972A10

4972C6

4972C3

4972C1

042-094-000-0217  
 12.0200 AC

SANDUSKY DRIVE

HILL CREEK FALLS

EMERALD POOLS FALLS

STONE MOUNTAIN FALLS

HOLLYWICK DRIVE

GEMOOR DRIVE

H.C. M.U.D. 1  
 WIMBLETON COUNTRY NORTH PAR R/P NO 1  
 SEC 1  
 125-032

24423-0001

24414-0001

24415-0001

24407-0003

24406-0029

24403-0025

24403-0004

24402-0005

24314-0004

24310-0003

24306-0002

24302-0001

24302-0011

24302-0009

8802-0006

8803-0005

8811-0003

8815-0003

8810-0025

8910-0026

8902-0019

8919-0020

8915-0021

8912-0023

8915-0021

8912-0023

8915-0021

8912-0023