

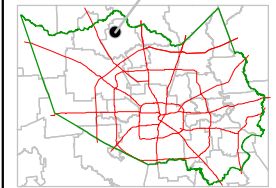
Harris County Appraisal District



0 100 200
 PUBLICATION DATE:
 11/17/2011

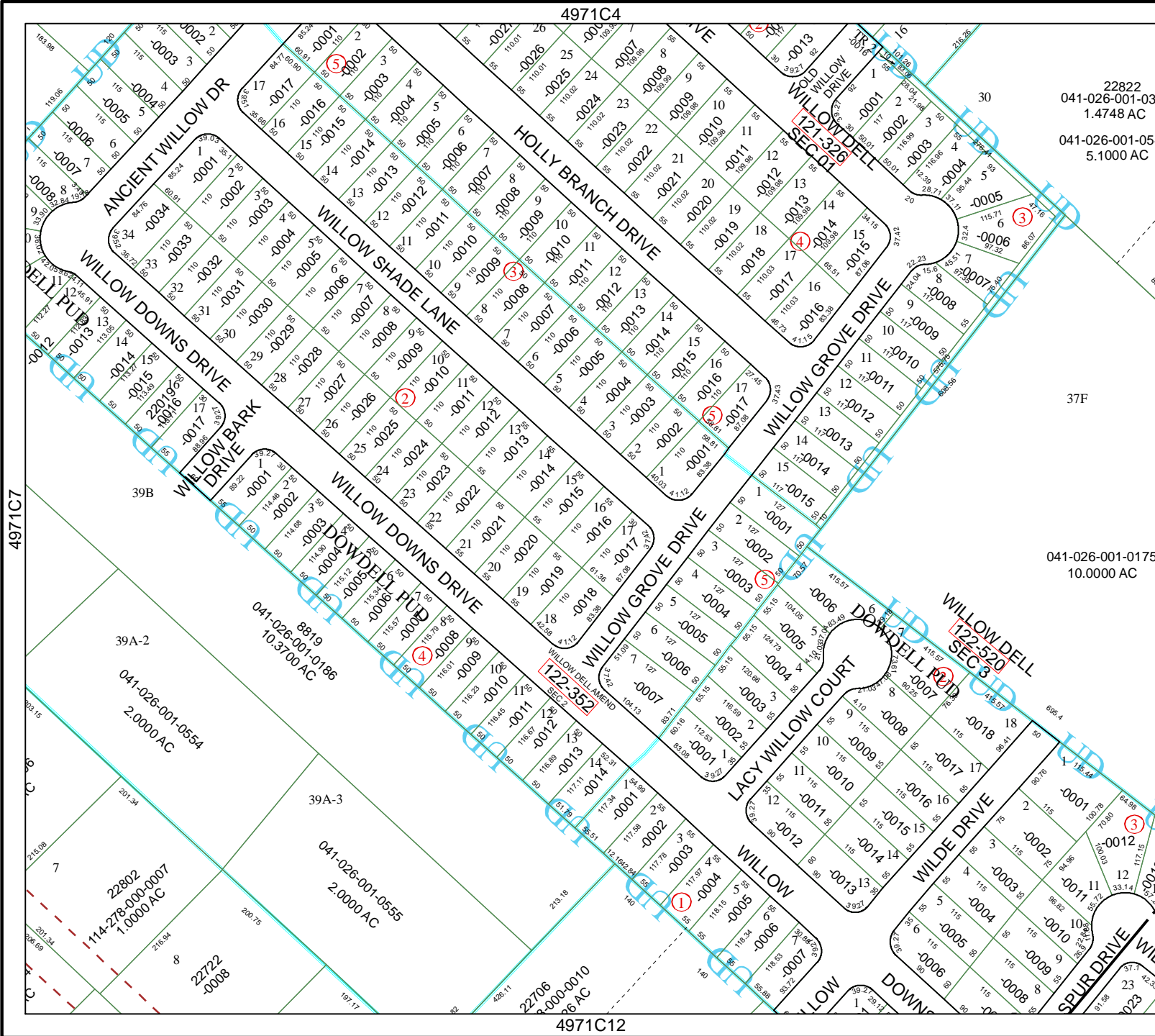
Geospatial or map data maintained by the Harris County Appraisal District is for informational purposes and may not have been prepared for or be suitable for legal, engineering, or surveying purposes. It does not represent an on-the-ground survey and only represents the approximate location of property boundaries.

MAP LOCATION



FACET 4971C

1	2	3	4
5	6	7	8
9	10	11	12



22822
 041-026-001-03
 1.4748 AC

041-026-001-05
 5.1000 AC

37F

041-026-001-0175
 10.0000 AC

4971C7

4971D5

4971C4

4971C12

