

4969A5

24.5645 AC

VILLAGE OF GLEANNLOCH APARTMENTS

129-063

Harris County Appraisal District



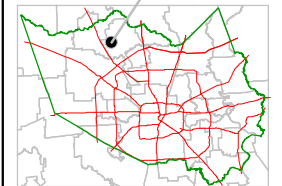
0 100 200

PUBLICATION DATE:
12/17/2011

Geospatial or map data maintained by the Harris County Appraisal District is for informational purposes and may not have been prepared for or be suitable for legal, engineering, or surveying purposes. It does not represent an on-the-ground survey and only represents the approximate location of property boundaries.



MAP LOCATION

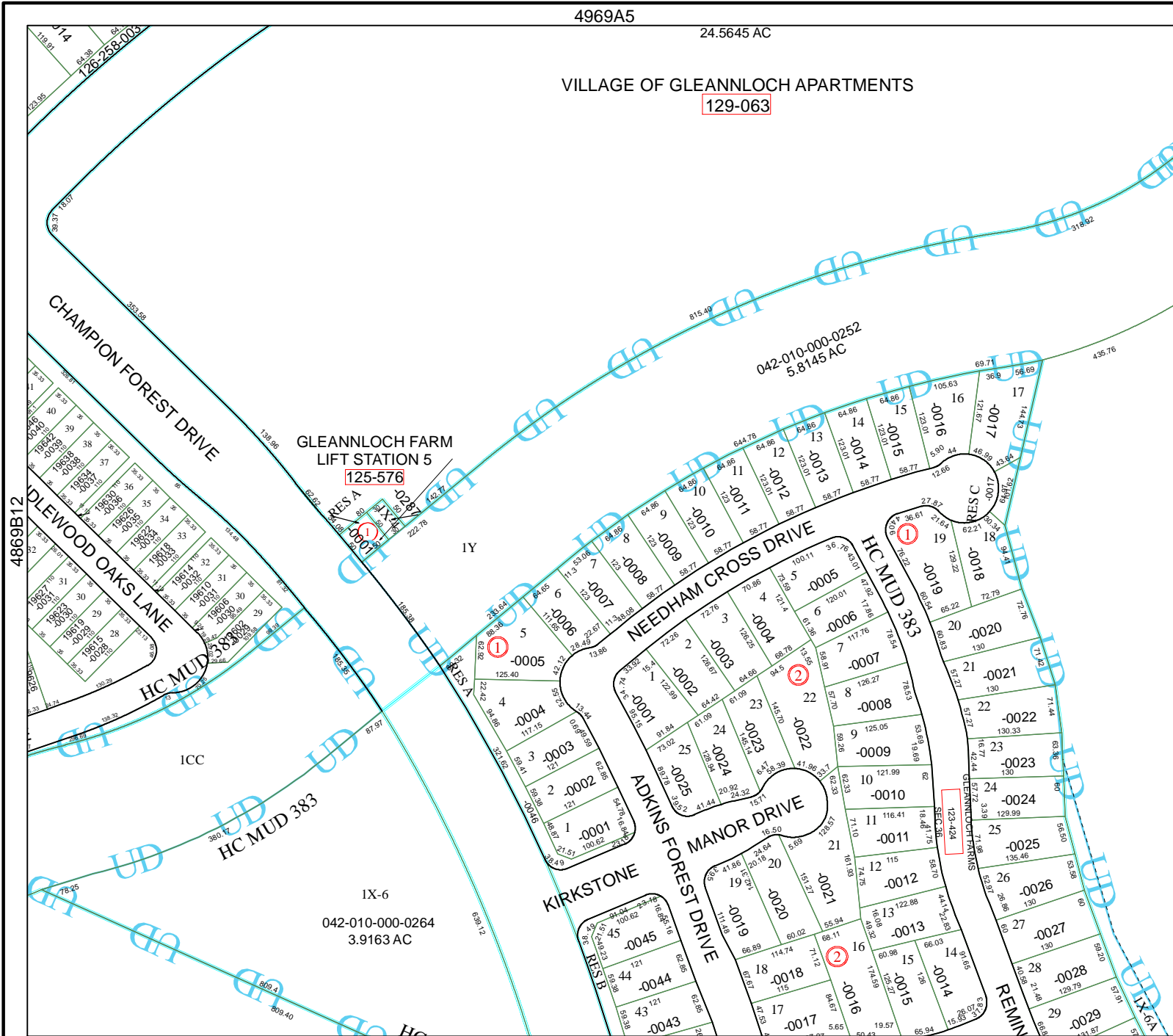


4969A10

FACET 4969A

1	2	3	4
5	6	7	8
9	10	11	12

4969C1



GLEANNLOCH FARM
LIFT STATION 5
125-576

042-010-000-0252
5.8145 AC

IX-6
042-010-000-0264
3.9163 AC

ICC

HC MUD 383

KIRKSTONE

ADKINS FOREST DRIVE

MANOR DRIVE

NEEDHAM CROSS DRIVE

HC MUD 383

RES C

RES A

RES A

RES A

RES A

RES A

RES A

RES A

RES A

RES A

RES A

RES A

RES A

RES A

RES A

RES A

RES A

RES A

RES A

RES A

RES A

RES A

RES A

RES A

RES A

RES A

RES A

RES A

RES A

RES A

RES A

RES A

RES A

RES A

RES A

RES A

RES A

RES A

RES A

RES A

RES A

RES A

RES A

RES A

RES A

RES A

RES A

RES A

RES A

RES A