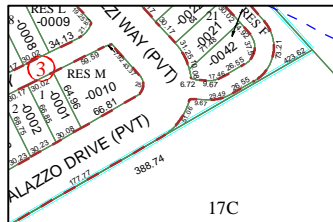


4967C5



17C

9B

043-172-000-0398
8.9400 AC

I-D

046-050-000-0574
13.7700 AC

I-E

4867D12

ES A-2

131-747-001-0003
2.7680 AC

9C

043-172-000-0411
10.7900 AC

4966A1

Harris County Appraisal District



0 100 200

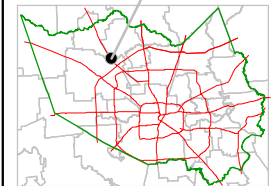
PUBLICATION DATE:
12/2/2011

Geospatial or map data maintained by the Harris County Appraisal District is for informational purposes and may **not** have been prepared for or be suitable for legal, engineering, or surveying purposes. It does **not** represent an on-the-ground survey and only represents the approximate location of property boundaries.



4967C10

MAP LOCATION



FACET 4967C

1	2	3	4
5	6	7	8
9	10	11	12

①