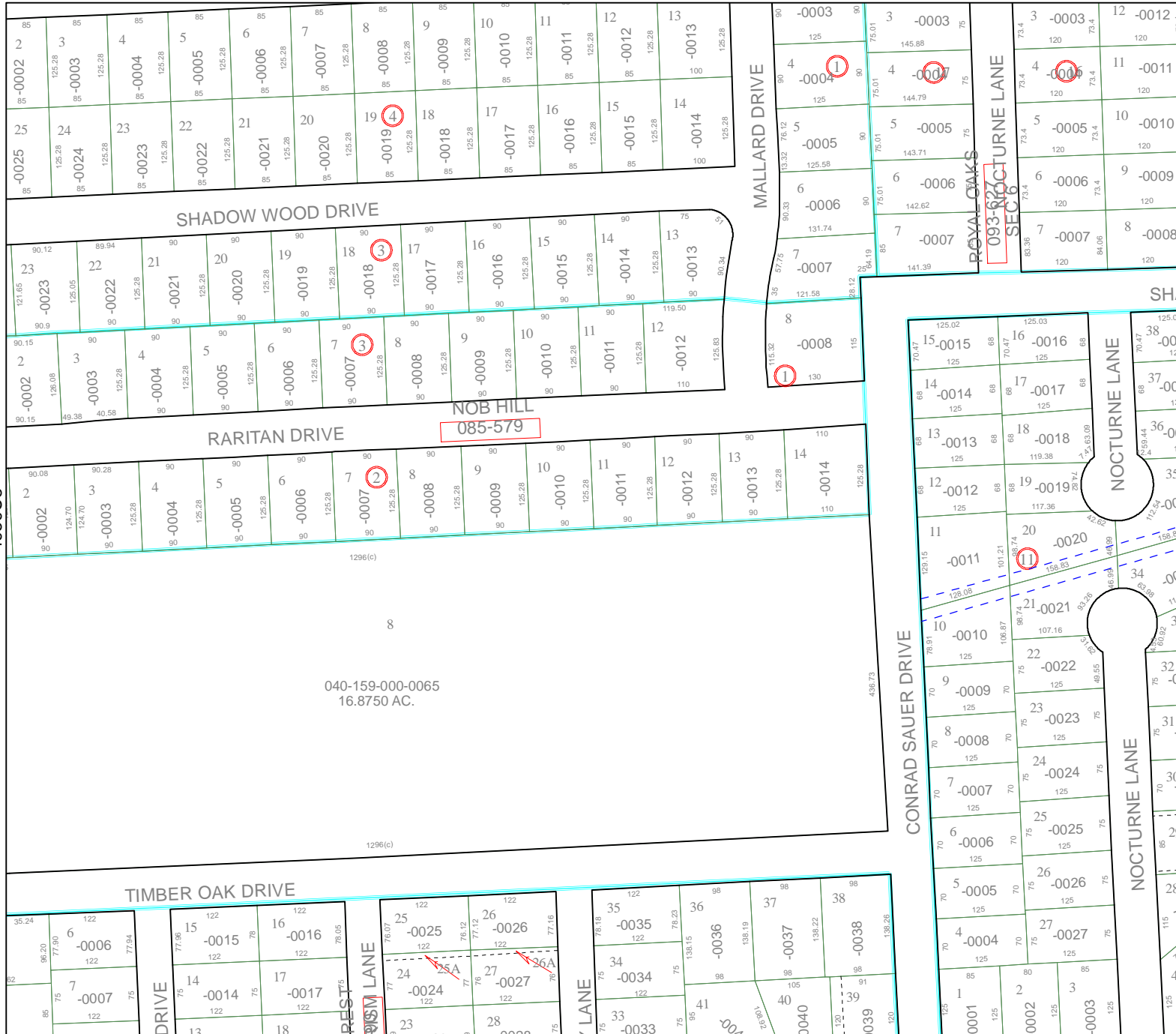


4959D1



4959D9

Harris County Appraisal District

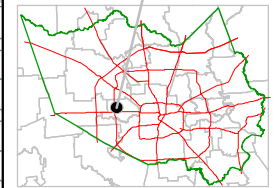


0 100 200

PUBLICATION DATE:
8/15/2011

Geospatial or map data maintained by the Harris County Appraisal District is for informational purposes and may not have been prepared for or be suitable for legal, engineering, or surveying purposes. It does not represent an on-the-ground survey and only represents the approximate location of property boundaries.

MAP LOCATION



FACET 4959D

1	2	3	4
5	6	7	8
9	10	11	12

4959C8

4959D6

040-159-000-0065
16.8750 AC.

8

1296(c)

1296(c)

NOB HILL
085-579

ROYAL OAKS
093-872
SEC. 6

