

4959C2

Harris County Appraisal District



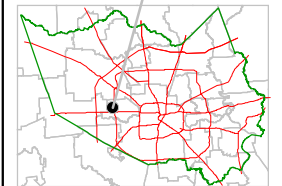
0 100 200

PUBLICATION DATE:
12/7/2011

Geospatial or map data maintained by the Harris County Appraisal District is for informational purposes and may not have been prepared for or be suitable for legal, engineering, or surveying purposes. It does not represent an on-the-ground survey and only represents the approximate location of property boundaries.



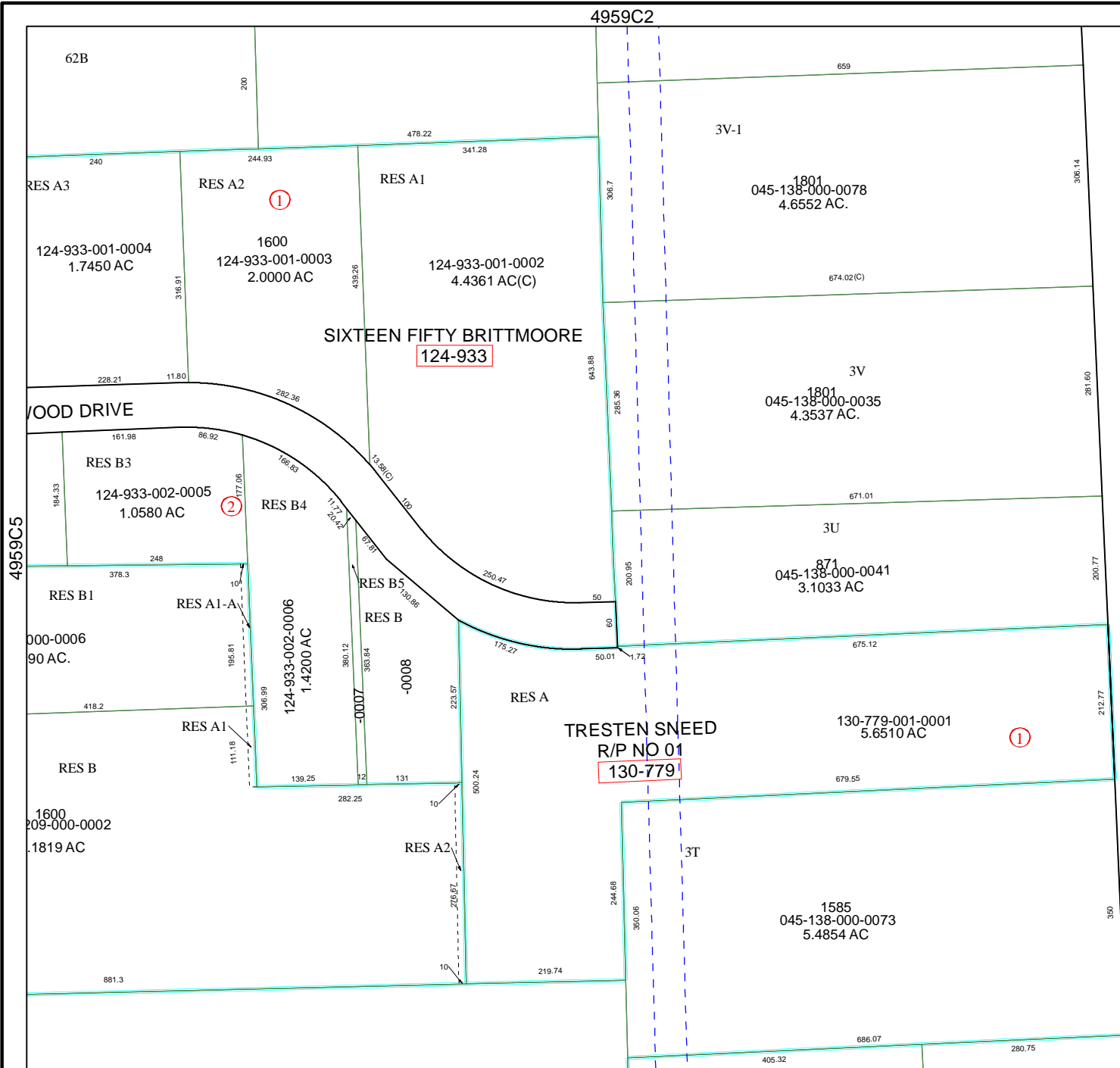
MAP LOCATION



FACET 4959C

1	2	3	4
5	6	7	8
9	10	11	12

4959C10



4959C5

4959C7

62B

RES A3
124-933-001-0004
1.7450 AC

RES A2
1600
124-933-001-0003
2.0000 AC

RES A1
124-933-001-0002
4.4361 AC(C)

SIXTEEN FIFTY BRITTMORE
124-933

WOOD DRIVE

RES B3
124-933-002-0005
1.0580 AC

RES B4

RES B1
124-933-002-0006
1.4200 AC

RES A1-A

RES B5

RES B

RES A1

RES A

TRESTEN SNEED
R/P NO 01
130-779

130-779-001-0001
5.6510 AC

RES B

1600
124-933-002-0002
1.819 AC

RES A2

RES 3T

1585
045-138-000-0073
5.4854 AC

881.3

405.32

280.75