

4959C6

064-046-000-0054
9.7700 AC

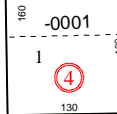
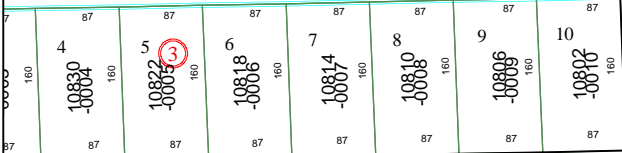
RES A

1555
119-222-001-0001
2.2277 AC

RES A1

1511
119-222-001-0003
7.7543 AC

1120.12



WARWANA ROAD

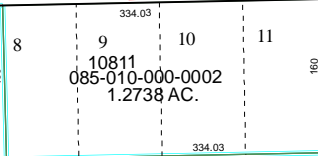
BRITTMOORE VILLAGE

085-010

WEST BELT BUSINESS PARK R/P NO 2

119-222

RESERVE



RES A

1500
131-070-001-0001
8.3039 AC

3S-2

1445
045-138-000-0080
3.5808 AC

00-0050
9 AC

3Y
1455
045-138-000-0058
1.1917 AC



MOORE ACRES
064-045

1440
064-045-000-0048
10.0000 AC

3S
1445
045-138-000-0038
8.1392 AC

Harris County Appraisal District



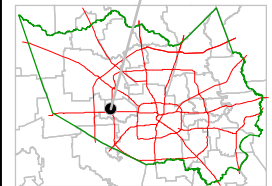
0 100 200

PUBLICATION DATE:
12/7/2011

Geospatial or map data maintained by the Harris County Appraisal District is for informational purposes and may not have been prepared for or be suitable for legal, engineering, or surveying purposes. It does not represent an on-the-ground survey and only represents the approximate location of property boundaries.



MAP LOCATION



FACET 4959C

1	2	3	4
5	6	7	8
9	10	11	12

4958A2

4959C9

4959C11