

4959B5

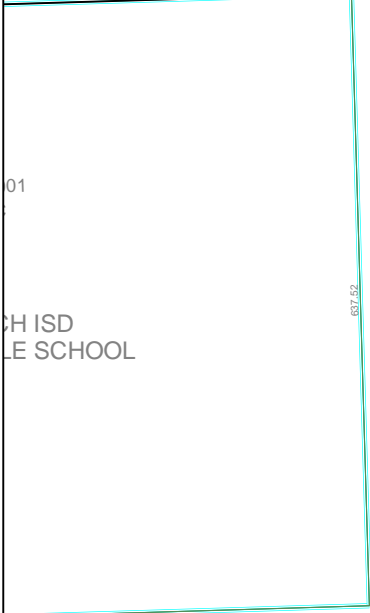


TRIAN VILLAGE T/H  
102-074  
SEC. 3

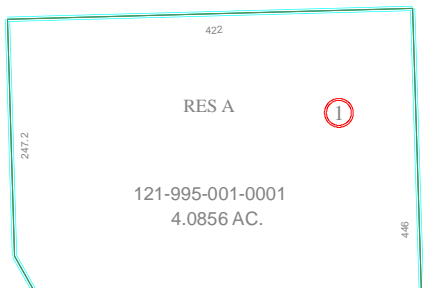
HAMMERLY BOULEVARD

2037.02

4959A12



9  
2045  
047-054-000-0142  
62.7451 AC



4959D1

# Harris County Appraisal District

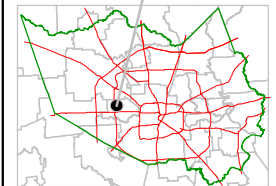


0 100 200  
 PUBLICATION DATE:  
 9/1/2011

Geospatial or map data maintained by the Harris County Appraisal District is for informational purposes and may not have been prepared for or be suitable for legal, engineering, or surveying purposes. It does not represent an on-the-ground survey and only represents the approximate location of property boundaries.



MAP LOCATION



## FACET 4959B

1	2	3	4
5	6	7	8
9	10	11	12

4959B10