

SPRING SHADOWS
101-338
SEC. 6

12

Harris County Appraisal District

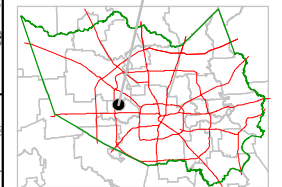


0 100 200
PUBLICATION DATE:
8/15/2011

Geospatial or map data maintained by the Harris County Appraisal District is for informational purposes and may not be suitable for legal, engineering, or surveying purposes. It does not represent an on-the-ground survey and only represents the approximate location of property boundaries.

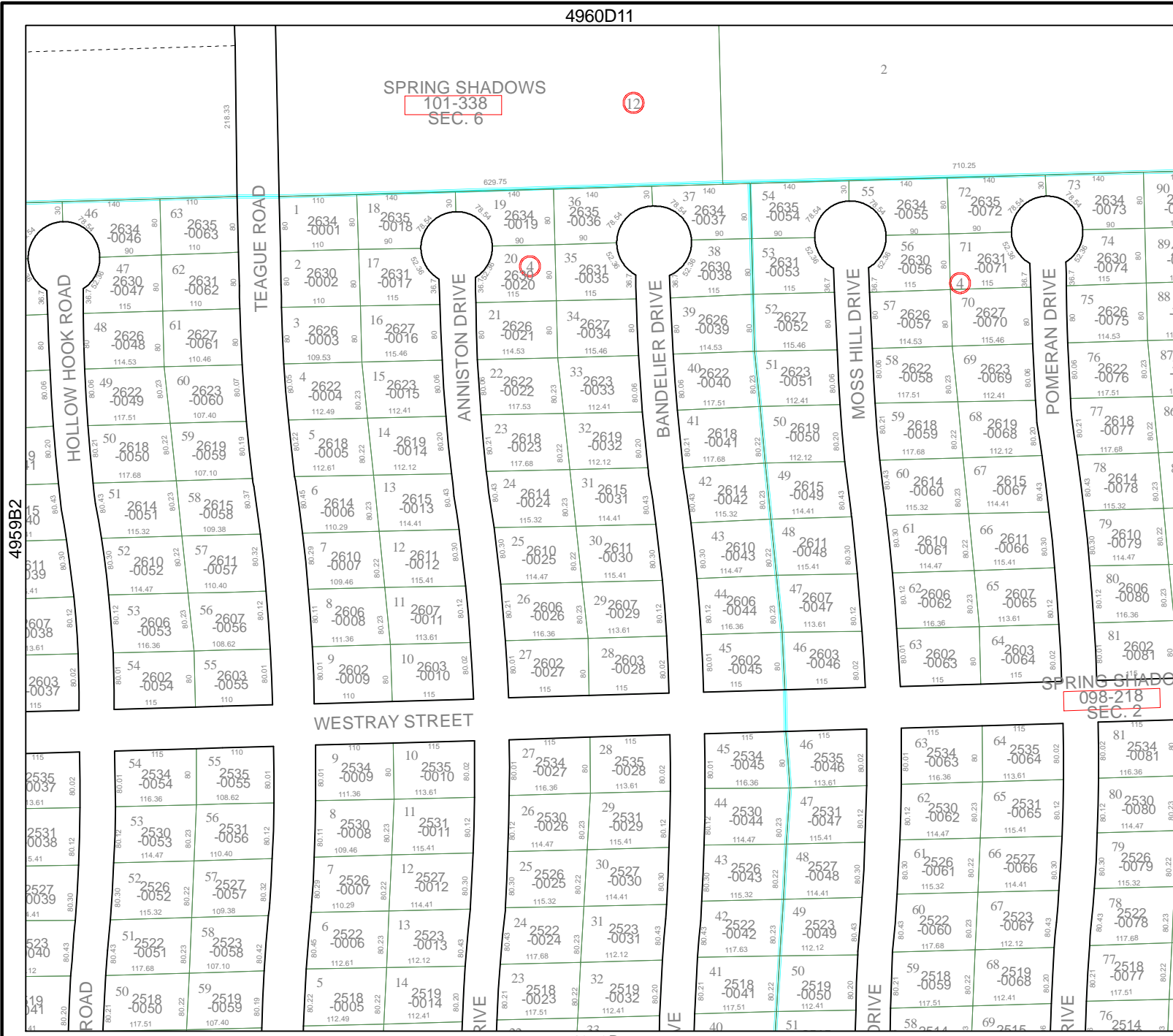


MAP LOCATION



FACET 4959B

1	2	3	4
5	6	7	8
9	10	11	12



4959B2

4959B4

SPRING SHADOWS
098-218
SEC. 2