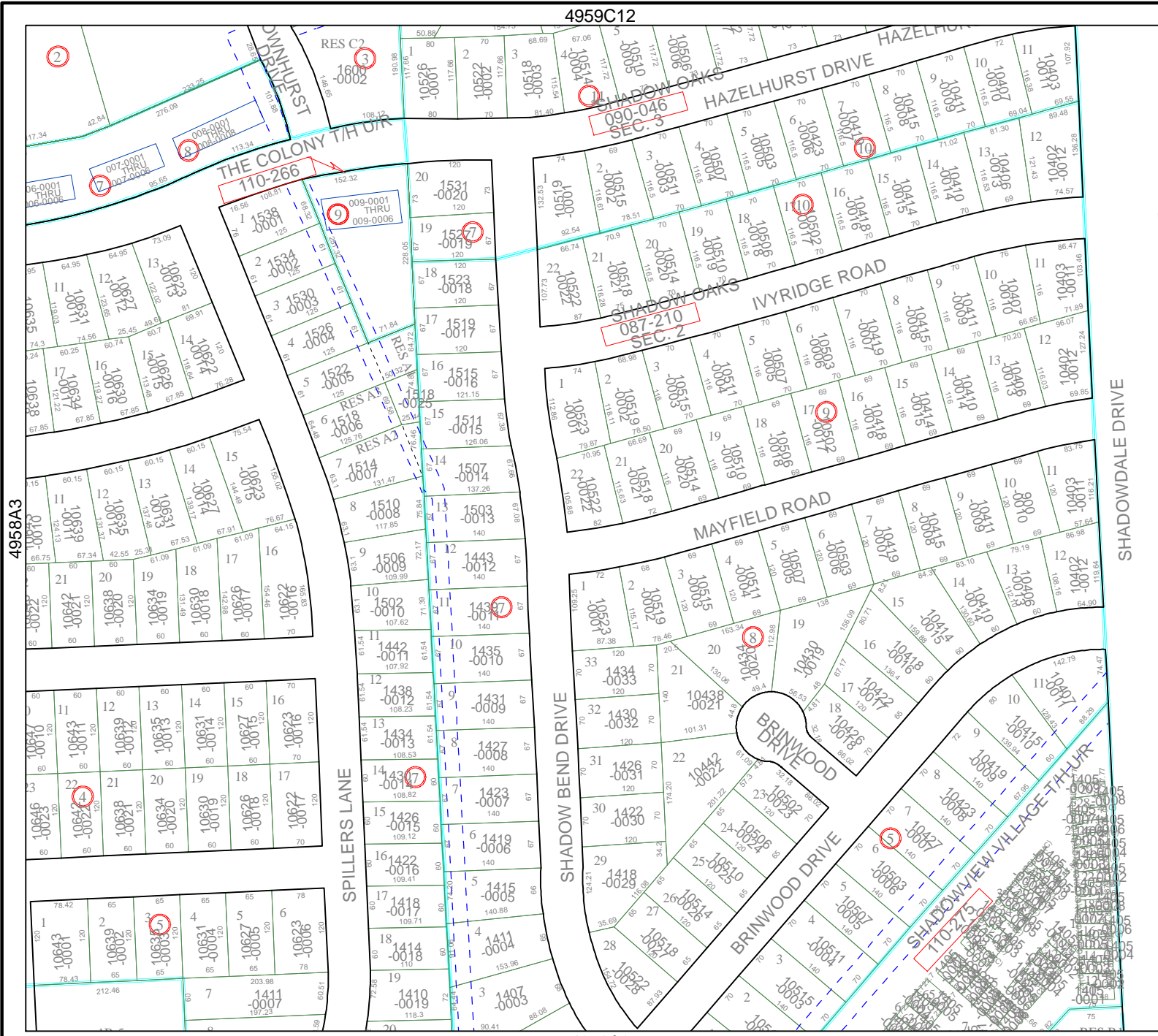


4959C12



4958A8

Harris County Appraisal District

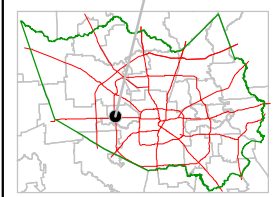


0 100 200
 PUBLICATION DATE:
 8/15/2011

Geospatial or map data maintained by the Harris County Appraisal District is for informational purposes and may not be suitable for legal, engineering, or surveying purposes. It does not represent an on-the-ground survey and only represents the approximate location of property boundaries.



MAP LOCATION



FACET 4958A

1	2	3	4
5	6	7	8
9	10	11	12

SHADOWDALE DRIVE

SHADOWDALE DRIVE

4958B1

4958A3