

Harris County Appraisal District



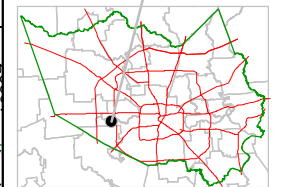
0 100 200

PUBLICATION DATE:
1/20/2012

Geospatial or map data maintained by the Harris County Appraisal District is for informational purposes and may not have been prepared for or be suitable for legal, engineering, or surveying purposes. It does not represent an on-the-ground survey and only represents the approximate location of property boundaries.

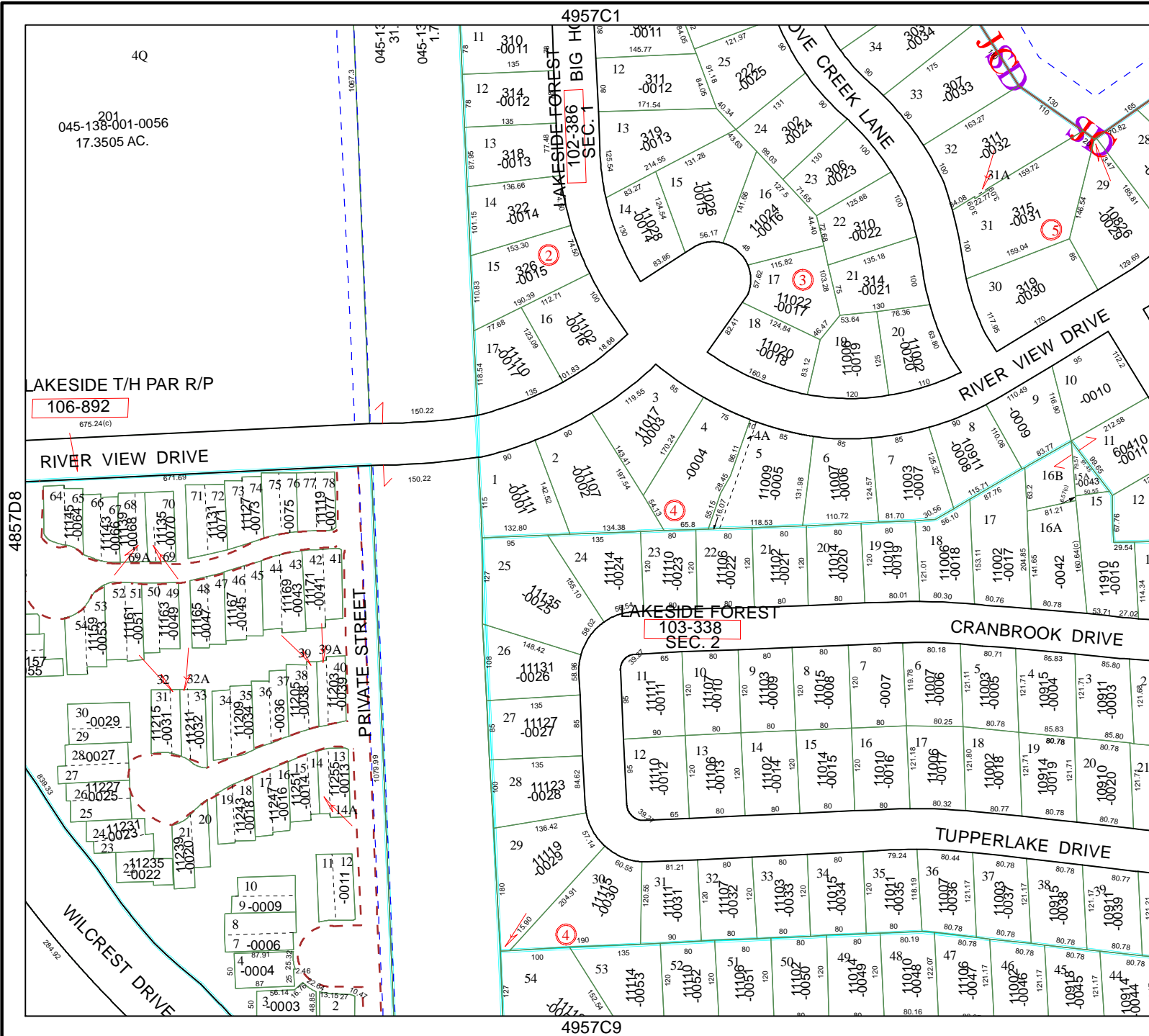


MAP LOCATION



FACET 4957C

1	2	3	4
5	6	7	8
9	10	11	12



201
045-138-001-0056
17.3505 AC.

LAKESIDE T/H PAR R/P
106-892
675.24(c)

4857D8

4957C1

4957C9

4957C6