

4957C7

WESTCHASE DIS

HOUSTON HOLLY

Harris County Appraisal District



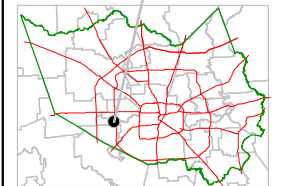
0 100 200

PUBLICATION DATE:
1/20/2012

Geospatial or map data maintained by the Harris County Appraisal District is for informational purposes and may not have been prepared for or be suitable for legal, engineering, or surveying purposes. It does not represent an on-the-ground survey and only represents the approximate location of property boundaries.



MAP LOCATION



FACET 4957C

1	2	3	4
5	6	7	8
9	10	11	12

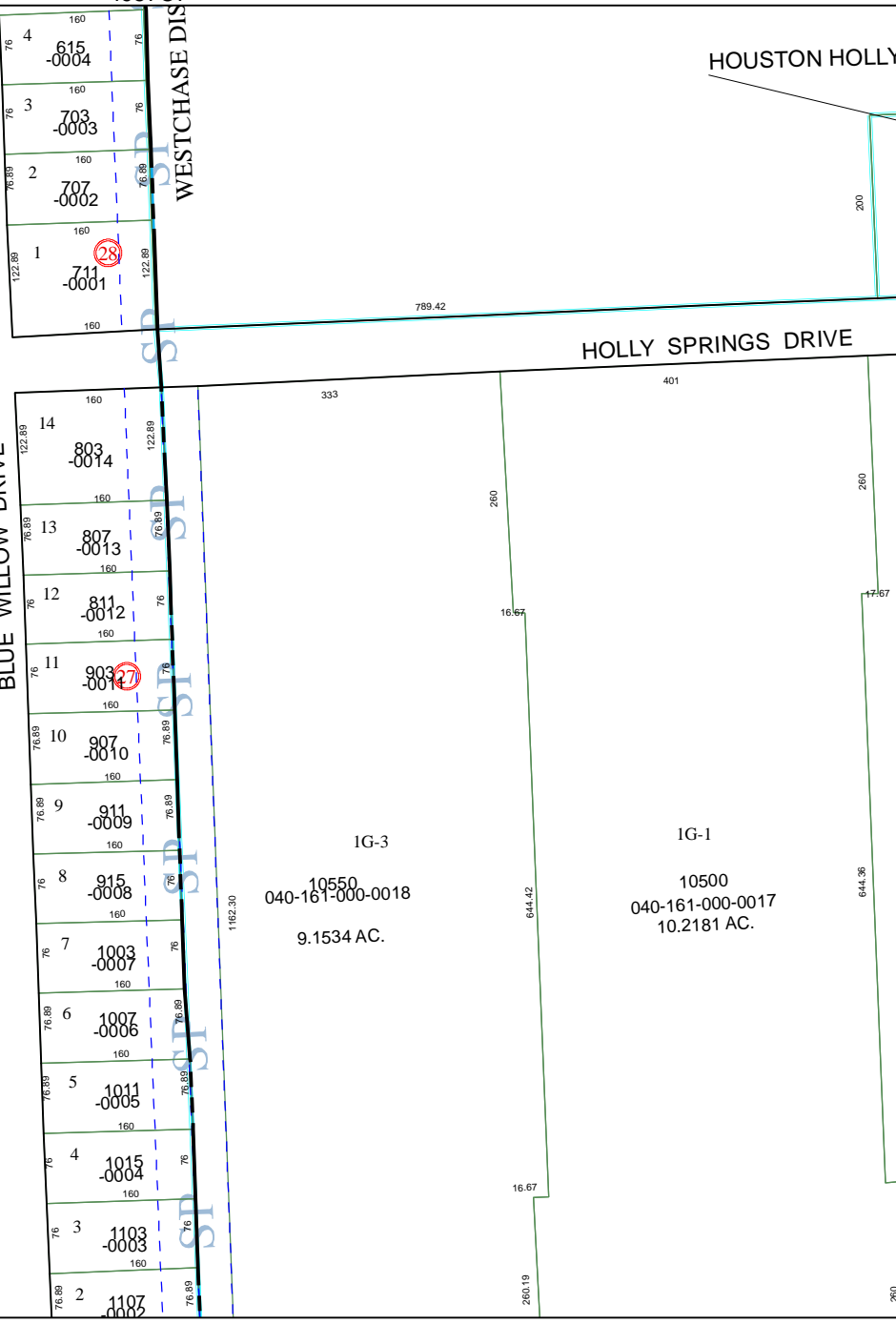
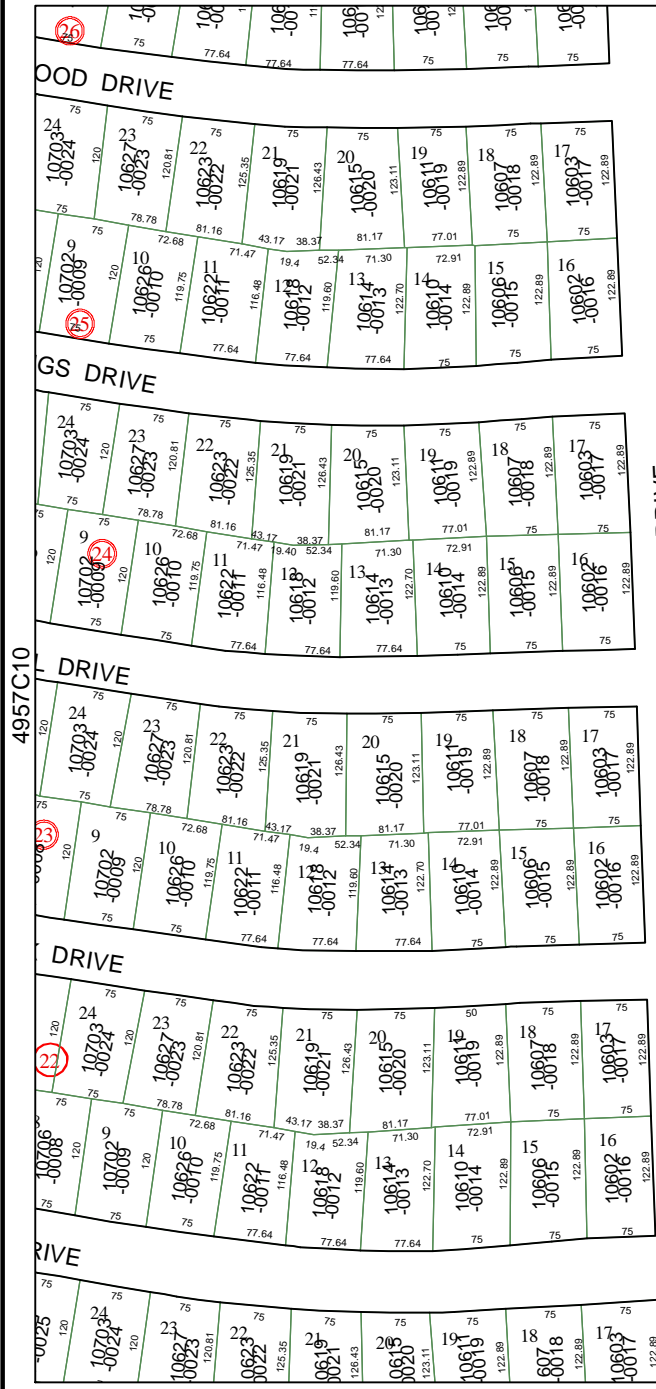
4956A3

BLUE WILLOW DRIVE

HOLLY SPRINGS DRIVE

IG-3
10550
040-161-000-0018
9.1534 AC.

IG-1
10500
040-161-000-0017
10.2181 AC.



4957C10

4957C12

OOD DRIVE

GS DRIVE

DRIVE

DRIVE

RIVE