

Harris County Appraisal District



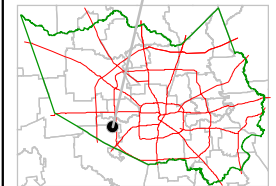
0 100 200

PUBLICATION DATE:
1/20/2012

Geospatial or map data maintained by the Harris County Appraisal District is for informational purposes and may **not** have been prepared for or be suitable for legal, engineering, or surveying purposes. It does **not** represent an on-the-ground survey and only represents the approximate location of property boundaries.

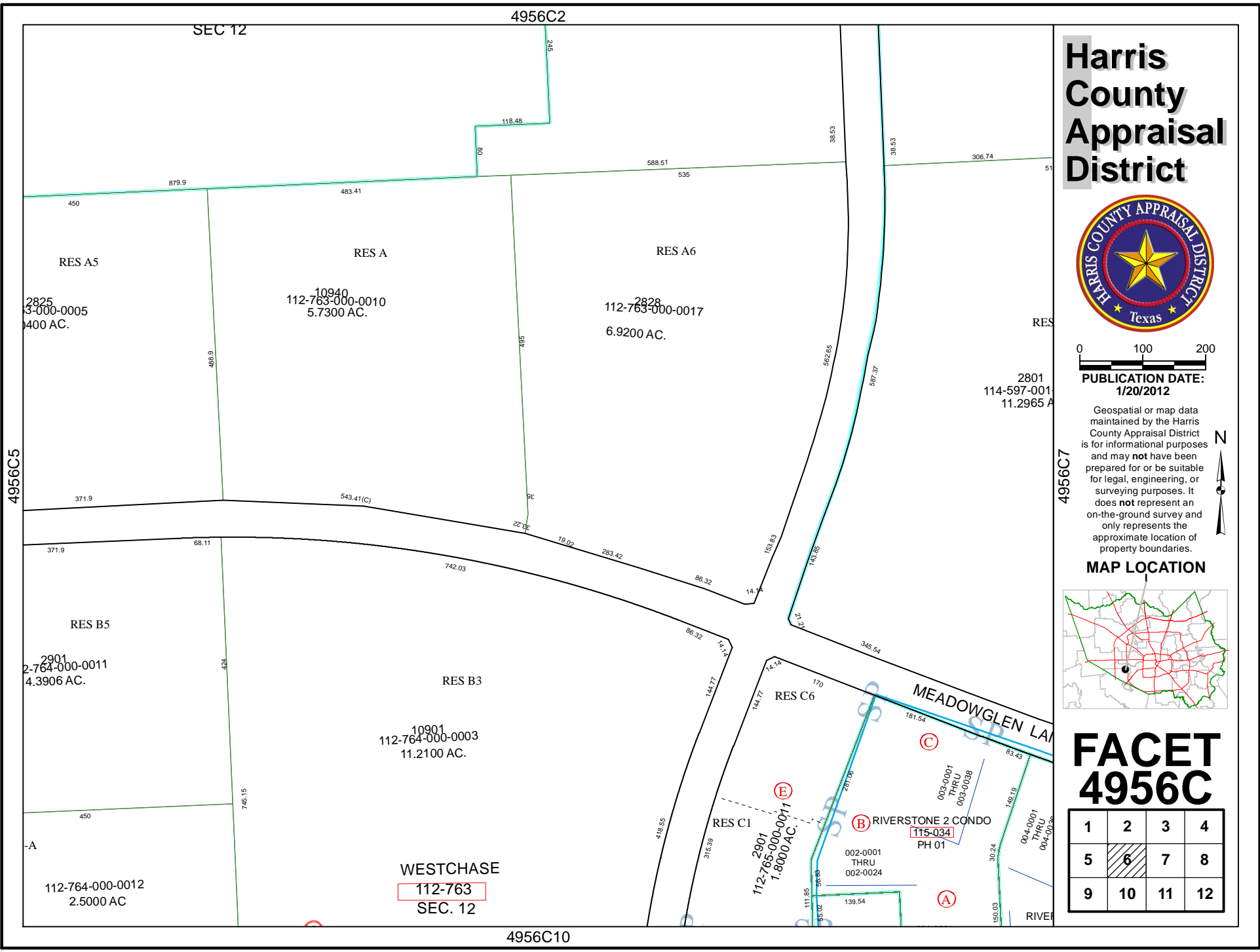


MAP LOCATION



FACET 4956C

1	2	3	4
5	6	7	8
9	10	11	12



WESTCHASE
112-763
SEC. 12

4956C10

4956C7

2801
114-597-001
11.2965 A

4956C5

SEC 12

4956C2

RES A5

RES A

RES A6

RES

RES B5

RES B3

RES C6

RES C1

MEADOWGLEN LANE

RIVER

2825
3-000-0005
400 AC.

10940
112-763-000-0010
5.7300 AC.

2828
112-763-000-0017
6.9200 AC.

2901
2-764-000-0011
4.3906 AC.

10901
112-764-000-0003
11.2100 AC.

2901
112-765-000-0011
1.8000 AC.

003-0001
THRU
003-0038
PH 01
115-034

002-0001
THRU
002-0024
RIVERSTONE 2 CONDO

112-764-000-0012
2.5000 AC