

4956C9

WESTCHASE
114-680
SEC. 17

RES B
11201
114-680-002-0001
14.2200 AC.

RES C
11111
114-680-003-0001
4.0600 AC.
WESTCHASE
114-680
SEC. 17

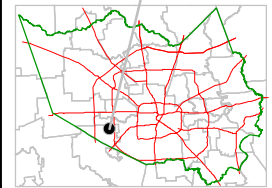
Harris County Appraisal District



0 100 200
PUBLICATION DATE:
1/20/2012

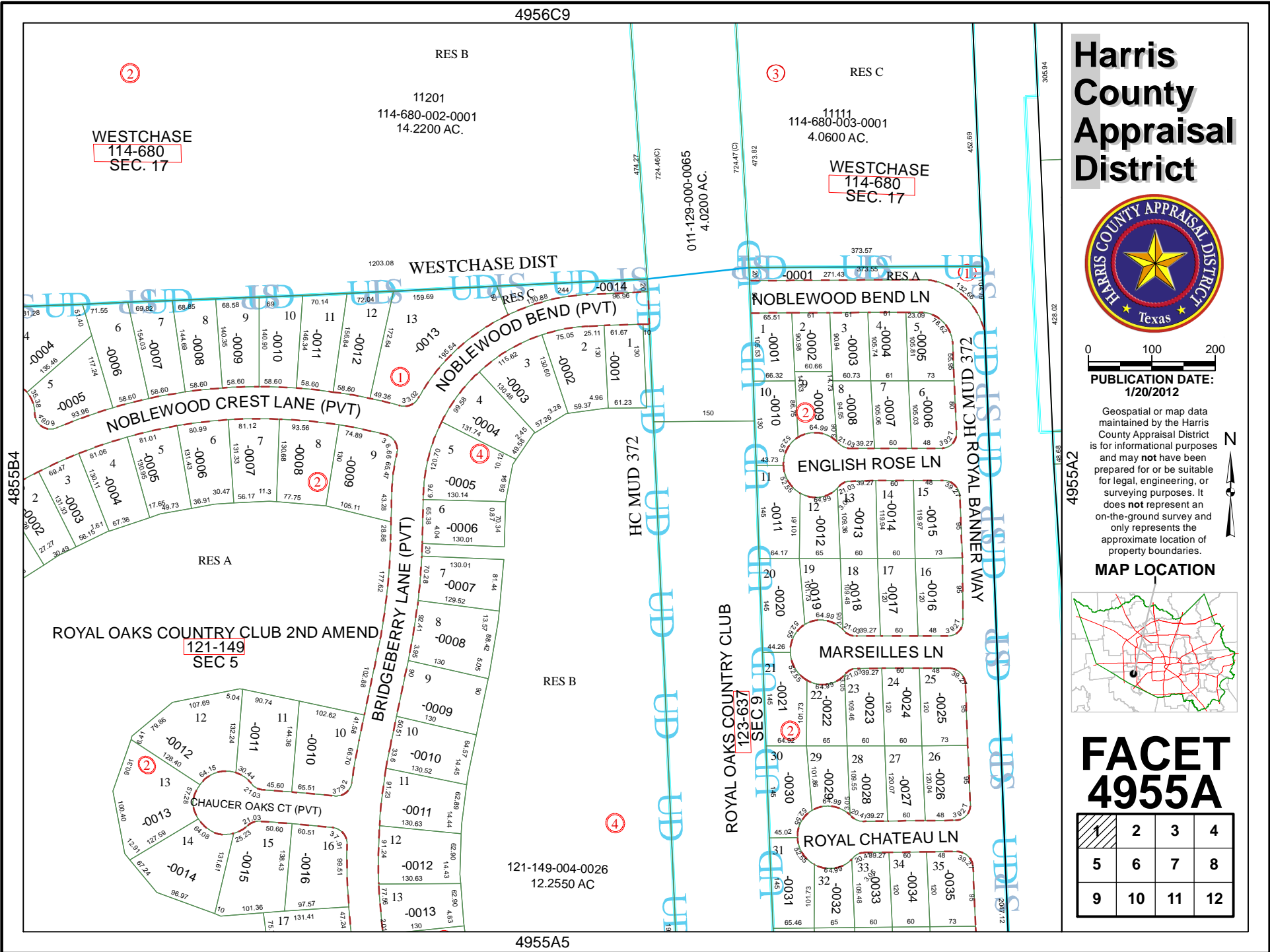
Geospatial or map data maintained by the Harris County Appraisal District is for informational purposes and may not be suitable for legal, engineering, or surveying purposes. It does not represent an on-the-ground survey and only represents the approximate location of property boundaries.

MAP LOCATION



FACET 4955A

1	2	3	4
5	6	7	8
9	10	11	12



4955A5