

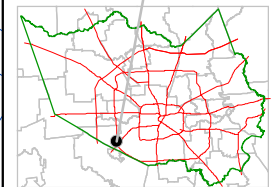
Harris County Appraisal District



0 100 200
PUBLICATION DATE:
 1/20/2012

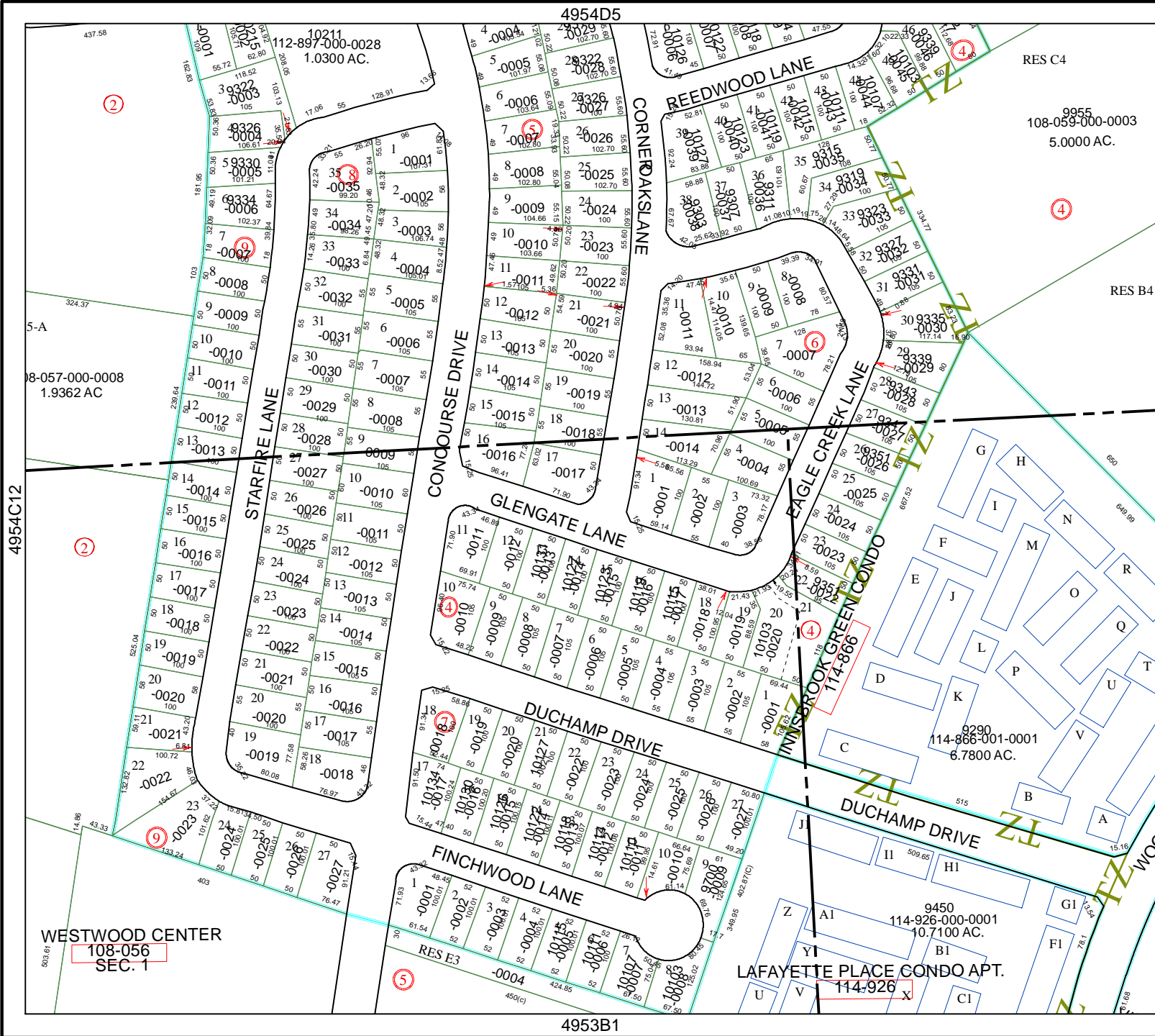
Geospatial or map data maintained by the Harris County Appraisal District is for informational purposes and may not have been prepared for or be suitable for legal, engineering, or surveying purposes. It does not represent an on-the-ground survey and only represents the approximate location of property boundaries.

MAP LOCATION



FACET 4954D

1	2	3	4
5	6	7	8
9	10	11	12



WESTWOOD CENTER
 108-056
 SEC. 1

9450
 114-926-000-001
 10.7100 AC.
 LAFAYETTE PLACE CONDO APT.
 114-926

RES C4
 9955
 108-059-000-0003
 5.0000 AC.

114-866-001-0001
 6.7800 AC.

4954D5

4953B1

4954C12

4954D10

