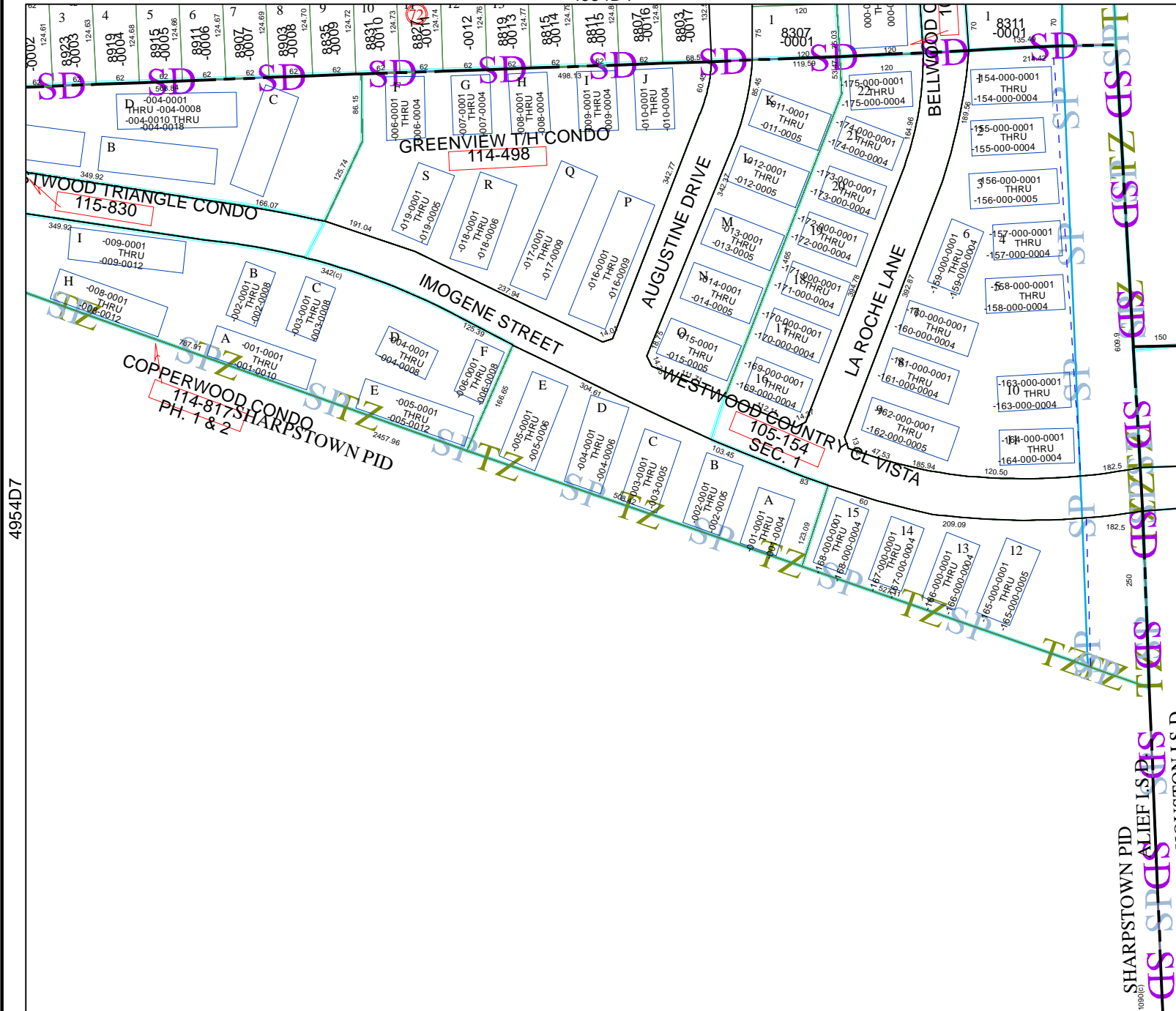


4954D4



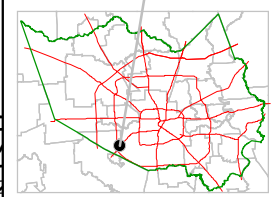
Harris County Appraisal District



0 100 200
 PUBLICATION DATE:
 1/20/2012

Geospatial or map data maintained by the Harris County Appraisal District is for informational purposes and may not have been prepared for or be suitable for legal, engineering, or surveying purposes. It does not represent an on-the-ground survey and only represents the approximate location of property boundaries.

MAP LOCATION



FACET 4954D

1	2	3	4
5	6	7	8
9	10	11	12

4954D12

4954D7

SHARPSTOWN PID 10000(C)

5054C5