

4953D2

RES A

10650  
117-428-001-0001  
7.7159 AC

10650  
119-719-001-0001  
7.7874 AC

RES A-1  
-0002

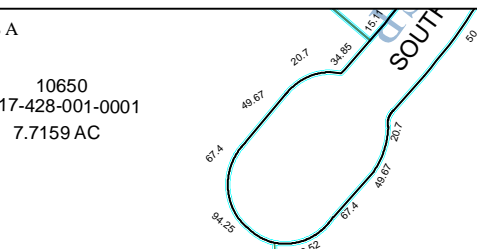
THWEST MINI STORAGE  
117-428

ALL STAR R/V RESORT  
119-719

4953D5

043-063-000-0191  
3.0249 AC.

1E



# Harris County Appraisal District



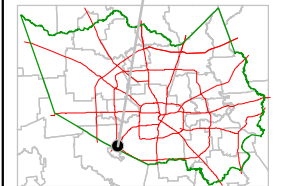
0 100 200

PUBLICATION DATE:  
1/20/2012

Geospatial or map data maintained by the Harris County Appraisal District is for informational purposes and may **not** have been prepared for or be suitable for legal, engineering, or surveying purposes. It does **not** represent an on-the-ground survey and only represents the approximate location of property boundaries.



### MAP LOCATION



## FACET 4953D

1	2	3	4
5	6	7	8
9	10	11	12

4953D10