

4953B11

DRSCHE/AUDI
696

123-696-001-0003
10.2340 AC

119-212-001-0003
8.1978 AC

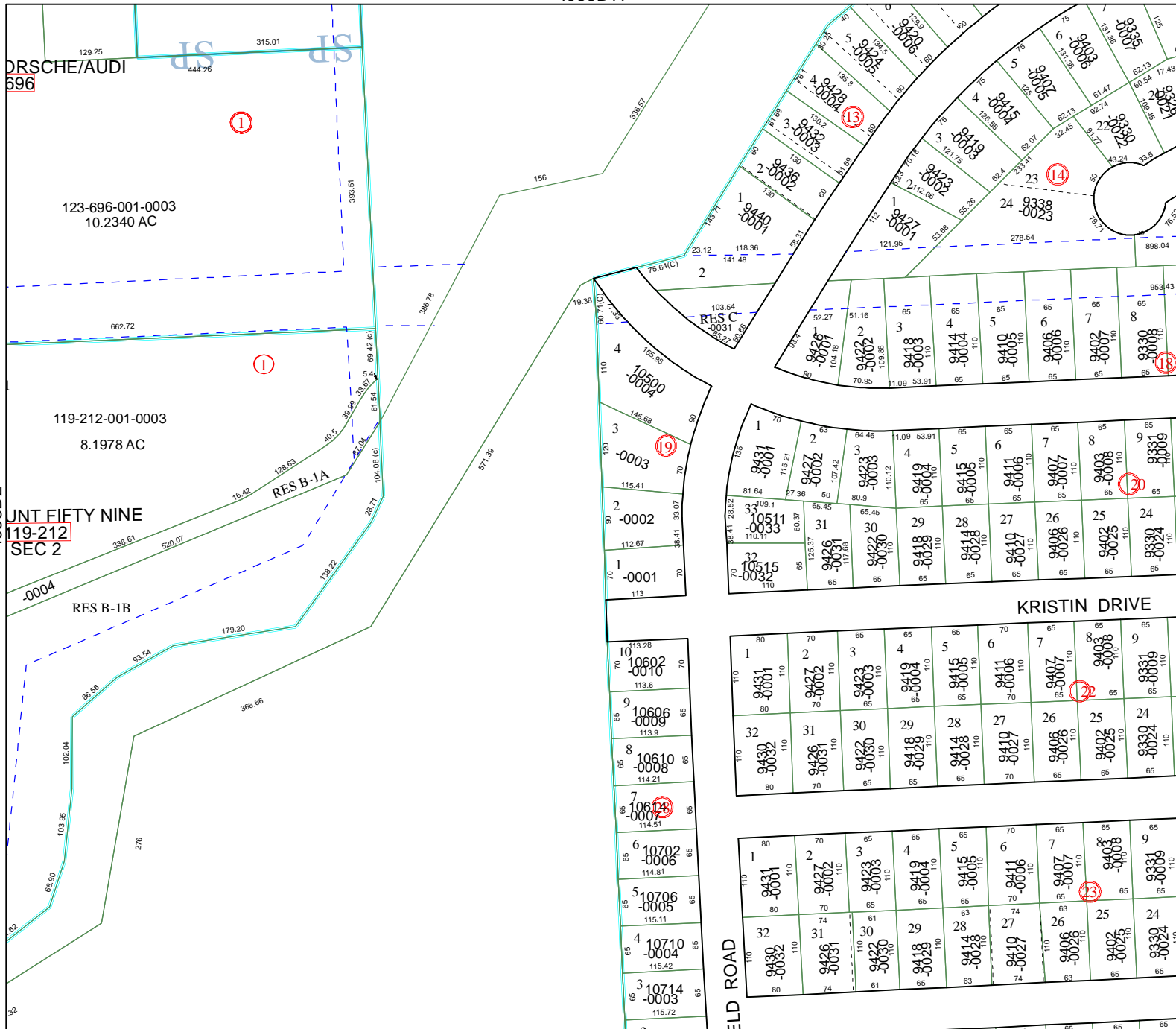
QUARTER FIFTY NINE
119-212
SEC 2

4953D2

RES B-1B

RES B-1A

4953D7



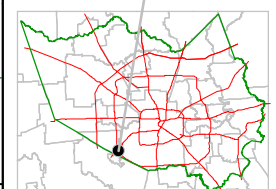
Harris County Appraisal District



0 100 200
 PUBLICATION DATE:
 2/9/2012

Geospatial or map data maintained by the Harris County Appraisal District is for informational purposes and may not have been prepared for or be suitable for legal, engineering, or surveying purposes. It does not represent an on-the-ground survey and only represents the approximate location of property boundaries.

MAP LOCATION



FACET 4953D

1	2	3	4
5	6	7	8
9	10	11	12

4953D4

