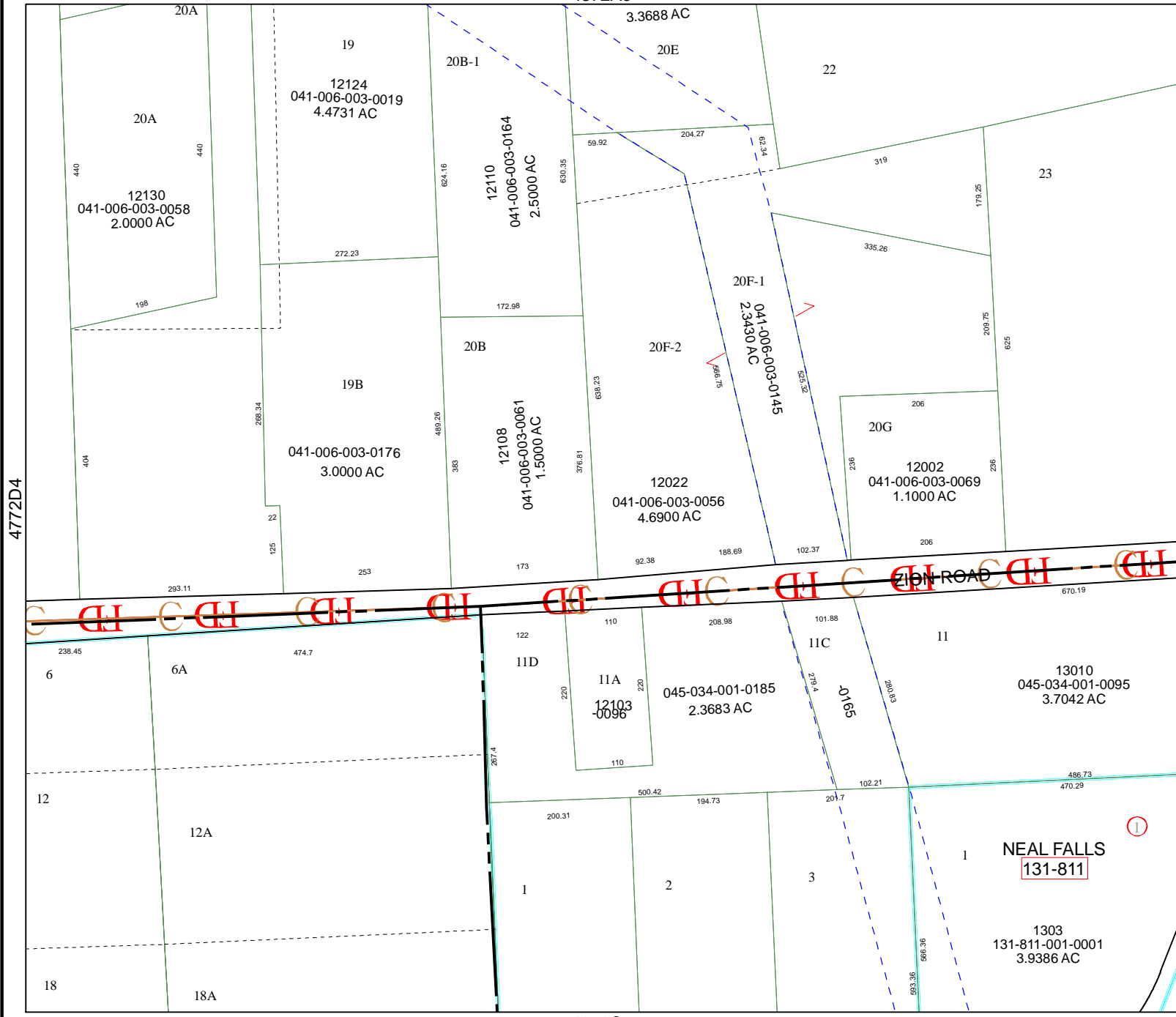


4872A9



4872C5

Harris County Appraisal District

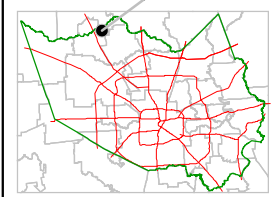


0 100 200
 PUBLICATION DATE:
 8/15/2011

Geospatial or map data maintained by the Harris County Appraisal District is for informational purposes and may not have been prepared for or be suitable for legal, engineering, or surveying purposes. It does not represent an on-the-ground survey and only represents the approximate location of property boundaries.



MAP LOCATION



FACET 4872C

1	2	3	4
5	6	7	8
9	10	11	12

4772D4

4872C2

NEAL FALLS
 131-811

1303
 131-811-001-0001
 3.9386 AC

045-034-001-0185
 2.3683 AC

041-006-003-0176
 3.0000 AC

12108
 041-006-003-0061
 1.5000 AC

20F-1
 041-006-003-0145
 2.3430 AC

12124
 041-006-003-0019
 4.4731 AC

12130
 041-006-003-0058
 2.0000 AC