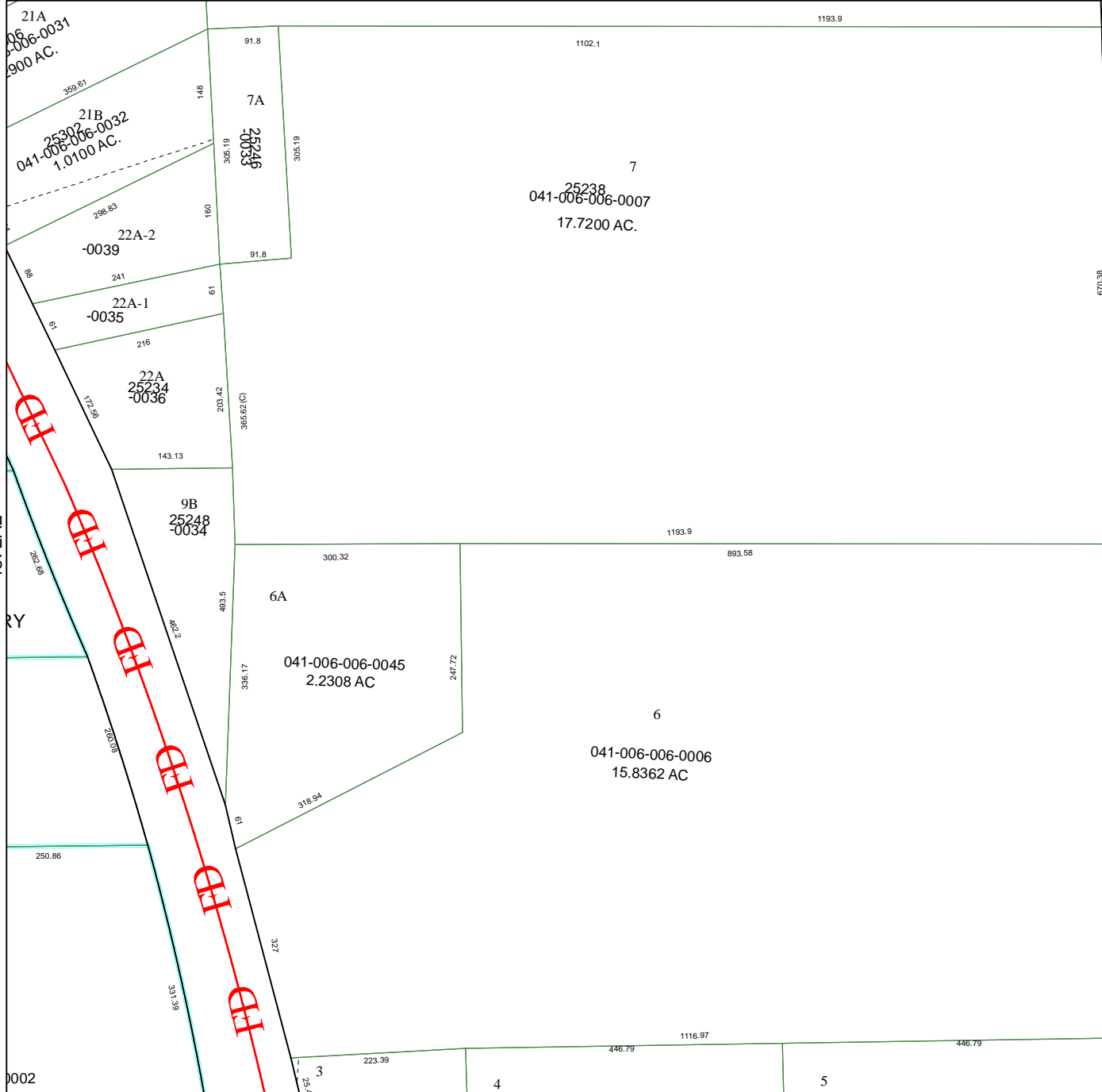


4873C11



4872A7

Harris County Appraisal District

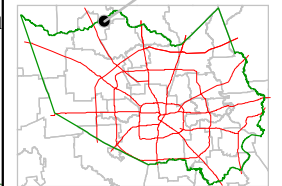


0 100 200
PUBLICATION DATE:
 2/9/2012

Geospatial or map data maintained by the Harris County Appraisal District is for informational purposes and may **not** have been prepared for or be suitable for legal, engineering, or surveying purposes. It does **not** represent an on-the-ground survey and only represents the approximate location of property boundaries.



MAP LOCATION



FACET 4872A

1	2	3	4
5	6	7	8
9	10	11	12

CEMETERY ROAD

UD

UD

4872A2

4872A4

14B

14F

0002

21A
041-006-0031
1.900 AC.

25232
041-006-0032
1.0100 AC.

22A-2
-0039

22A-1
-0035

22A
25234
-0036

9B
25248
-0034

6A
041-006-006-0045
2.2308 AC

6
041-006-006-0006
15.8362 AC

7
25238
041-006-006-0007
17.7200 AC.

3

4

5

670.38

246.85

1

14

187.57

212.53

281.3

1102.1

1193.9

1193.9

893.58

6

041-006-006-0006
15.8362 AC

19

327

3

223.39

446.79

1116.97

446.79

66.153

80.008

69.056

143.13

216

241

298.83

148

306.19

25238

91.8

306.19

300.32

318.94

483.5

300.32

338.17

247.72

327

4

1116.97

446.79

041-006-006-0006
15.8362 AC

893.58

1193.9

483.5

300.32

338.17

6

041-006-006-0006
15.8362 AC

19

327

5

670.38

246.85

1

14

187.57

212.53

281.3

1102.1

1193.9

1193.9

893.58

6

041-006-006-0006
15.8362 AC

19

327

3

223.39

446.79

1116.97

446.79

66.153

80.008

69.056

143.13

216

241

298.83

148

306.19

25238

91.8

306.19

300.32

318.94

483.5

300.32

338.17

247.72

327

4

1116.97

446.79

041-006-006-0006
15.8362 AC

893.58

1193.9

483.5

300.32

338.17

6

041-006-006-0006
15.8362 AC

19

327

5

670.38

246.85

1

14

187.57

212.53

281.3

1102.1

1193.9

1193.9

893.58

6

041-006-006-0006
15.8362 AC

19

327

3

223.39

446.79

1116.97

446.79

66.153

80.008

69.056

143.13

216

241

298.83

148

306.19

25238

91.8

306.19

300.32

318.94

483.5

300.32

338.17

247.72

327

4

1116.97

446.79

041-006-006-0006
15.8362 AC

893.58

1193.9

483.5

300.32

338.17

6

041-006-006-0006
15.8362 AC

19

327

5

670.38

246.85

1

14

187.57

212.53

281.3

1102.1

1193.9

1193.9

893.58

6

041-006-006-0006
15.8362 AC

19

327

3

223.39

446.79

1116.97

446.79

66.153

80.008

69.056

143.13

216

241

298.83

148

306.19

25238

91.8

306.19

300.32

318.94

483.5

300.32

338.17

247.72

327

4

1116.97

446.79

041-006-006-0006
15.8362 AC

893.58

1193.9

483.5

300.32

338.17

6

041-006-006-0006
15.8362 AC

19

327

5

670.38

246.85

1

14

187.57

212.53

281.3

1102.1

1193.9

1193.9

893.58

6

041-006-006-0006
15.8362 AC

19

327

3

223.39

446.79

1116.97

446.79

66.153

80.008

69.056

143.13

216

241

298.83

148

306.19

25238

91.8

306.19

300.32

318.94

483.5

300.32

338.17

247.72

327

4

1116.97

446.79

041-006-006-0006
15.8362 AC

893.58

1193.9

483.5

300.32

338.17

6

041-006-006-0006
15.8362 AC

19