

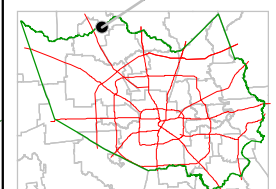
Harris County Appraisal District



0 100 200
PUBLICATION DATE:
 8/15/2011

Geospatial or map data maintained by the Harris County Appraisal District is for informational purposes and may not have been prepared for or be suitable for legal, engineering, or surveying purposes. It does not represent an on-the-ground survey and only represents the approximate location of property boundaries.

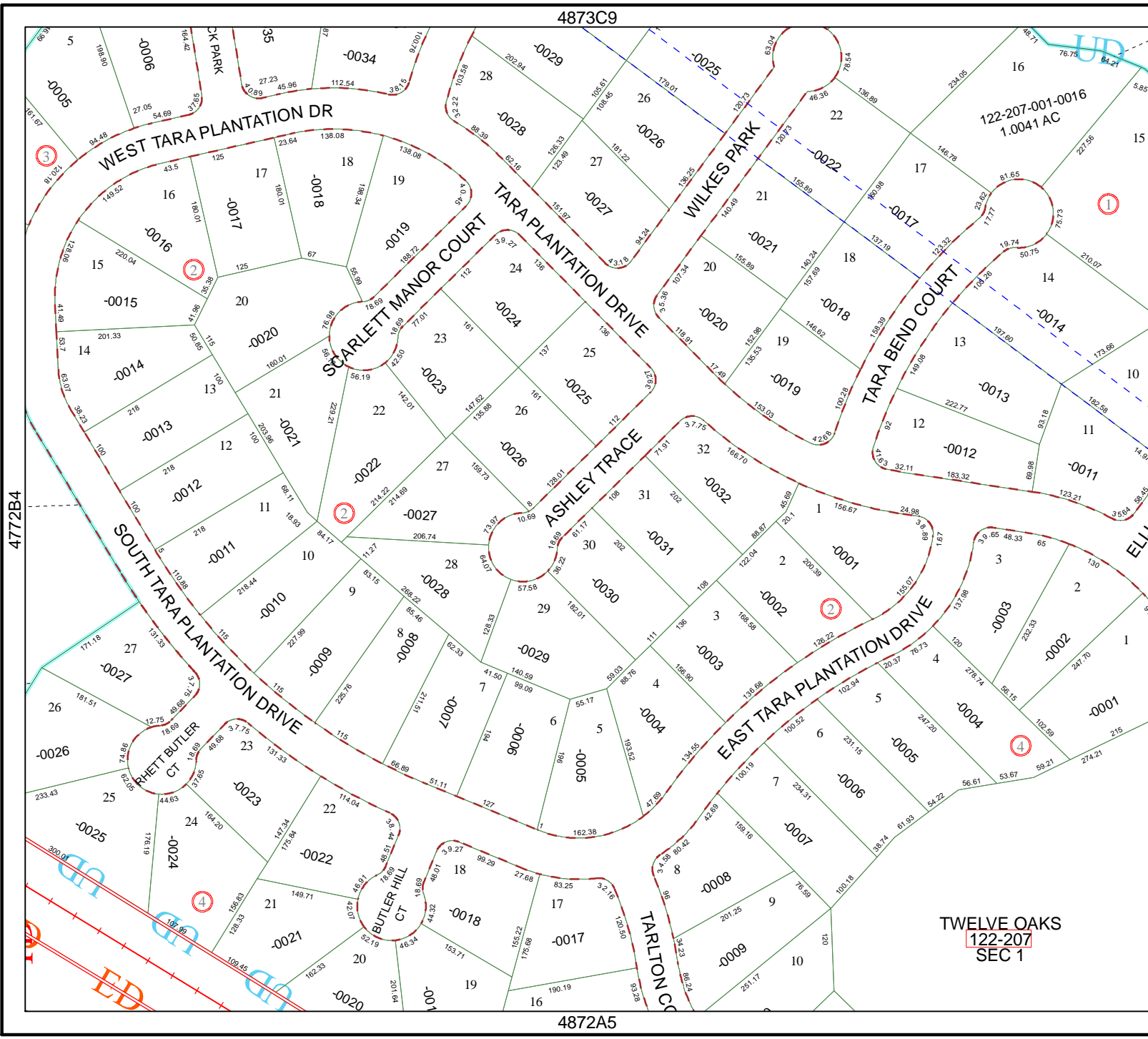
MAP LOCATION



FACET 4872A

1	2	3	4
5	6	7	8
9	10	11	12

TWELVE OAKS
 122-207
 SEC 1



4772B4

4873C9

4872A2

4872A5