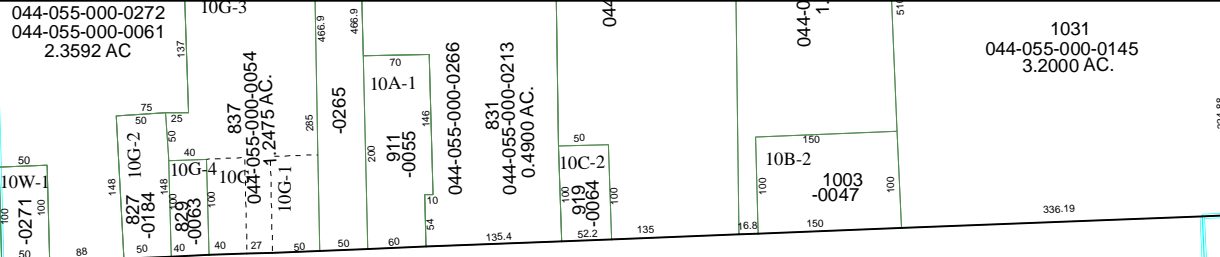
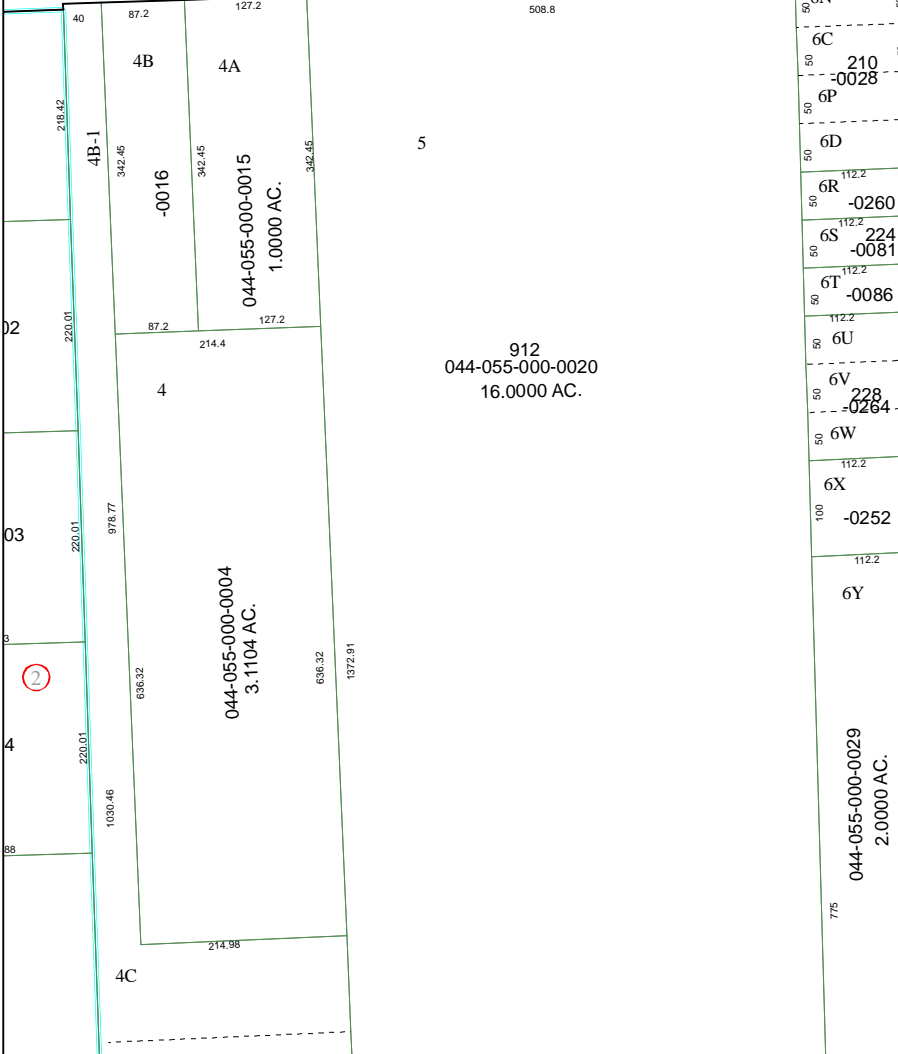


4871A5

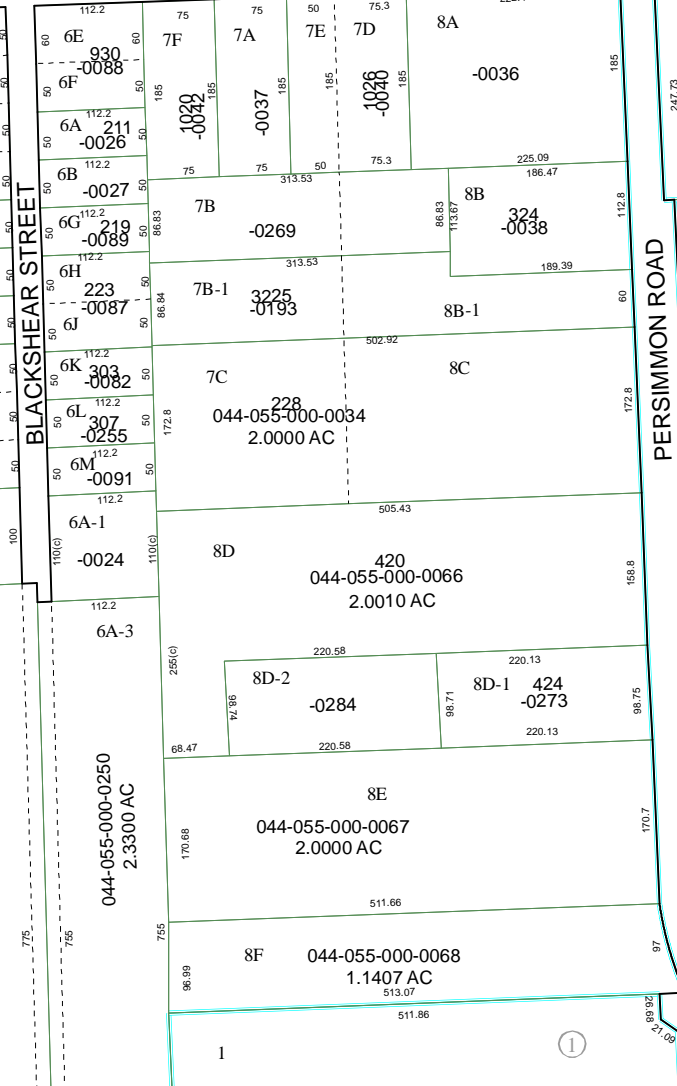


TIMKIN ROAD

4771B12



4871C1



PERSIMMON ROAD

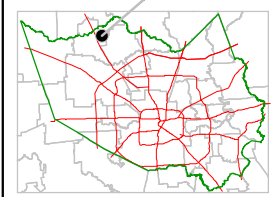
Harris County Appraisal District



0 100 200
 PUBLICATION DATE:
 9/14/2011

Geospatial or map data maintained by the Harris County Appraisal District is for informational purposes and may not have been prepared for or be suitable for legal, engineering, or surveying purposes. It does not represent an on-the-ground survey and only represents the approximate location of property boundaries.

MAP LOCATION



FACET 4871A

| | | | |
|---|----|----|----|
| 1 | 2 | 3 | 4 |
| 5 | 6 | 7 | 8 |
| 9 | 10 | 11 | 12 |

