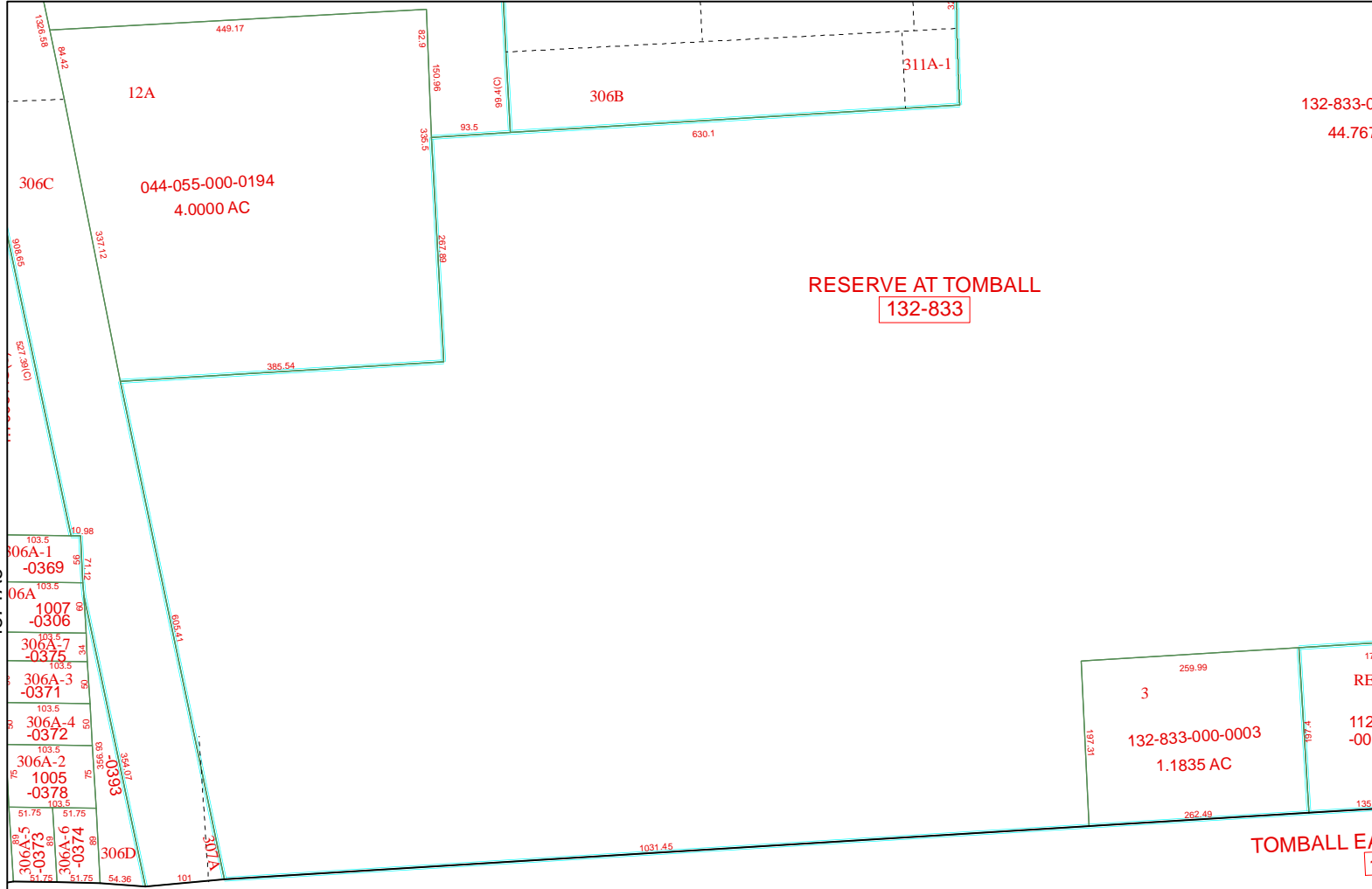


4871A2



RESERVE AT TOMBALL
132-833

132-833-00
44.7678

4871A5

4871A7

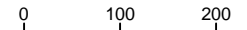
EAST MAIN STREET

TOMBALL EA
1

RES A

4871A10

Harris County Appraisal District

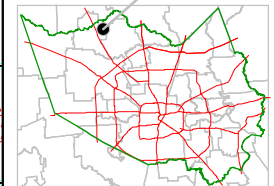


PUBLICATION DATE:
1/11/2012

Geospatial or map data maintained by the Harris County Appraisal District is for informational purposes and may not have been prepared for or be suitable for legal, engineering, or surveying purposes. It does not represent an on-the-ground survey and only represents the approximate location of property boundaries.



MAP LOCATION



FACET 4871A

1	2	3	4
5	6	7	8
9	10	11	12