

4871D11

RESERVE AT INVERNESS  
130-754 SEC01

130-754-001-0007  
17.6817 AC

# Harris County Appraisal District

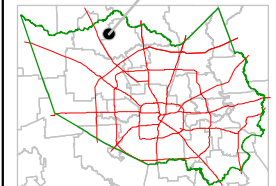


0 100 200

PUBLICATION DATE:  
8/12/2011

Geospatial or map data maintained by the Harris County Appraisal District is for informational purposes and may not have been prepared for or be suitable for legal, engineering, or surveying purposes. It does not represent an on-the-ground survey and only represents the approximate location of property boundaries.

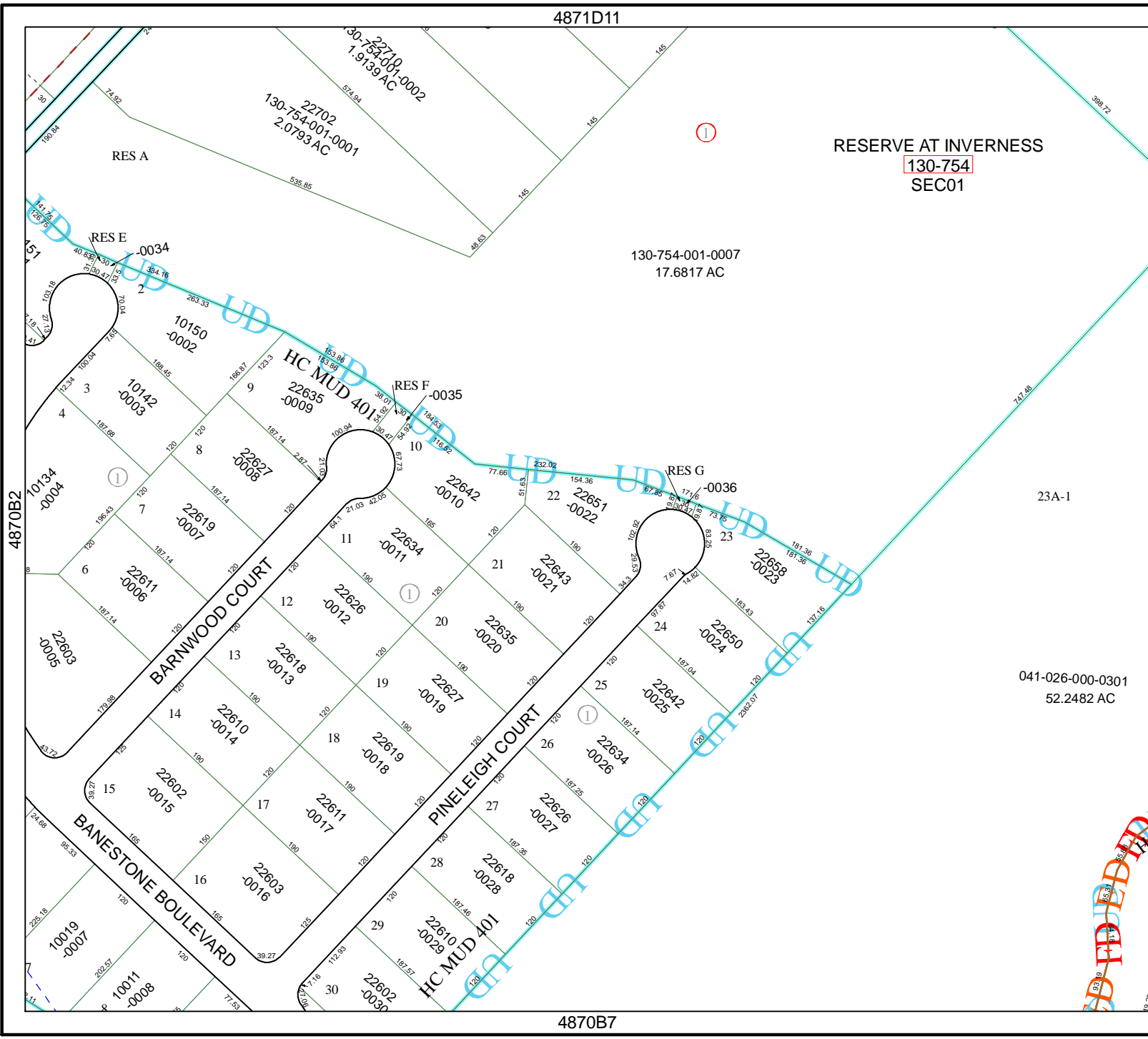
MAP LOCATION



## FACET 4870B

1	2	3	4
5	6	7	8
9	10	11	12

4870B7



041-026-000-0301  
52.2482 AC

23A-1