

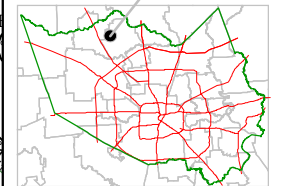
Harris County Appraisal District



0 100 200
 PUBLICATION DATE:
 8/12/2011

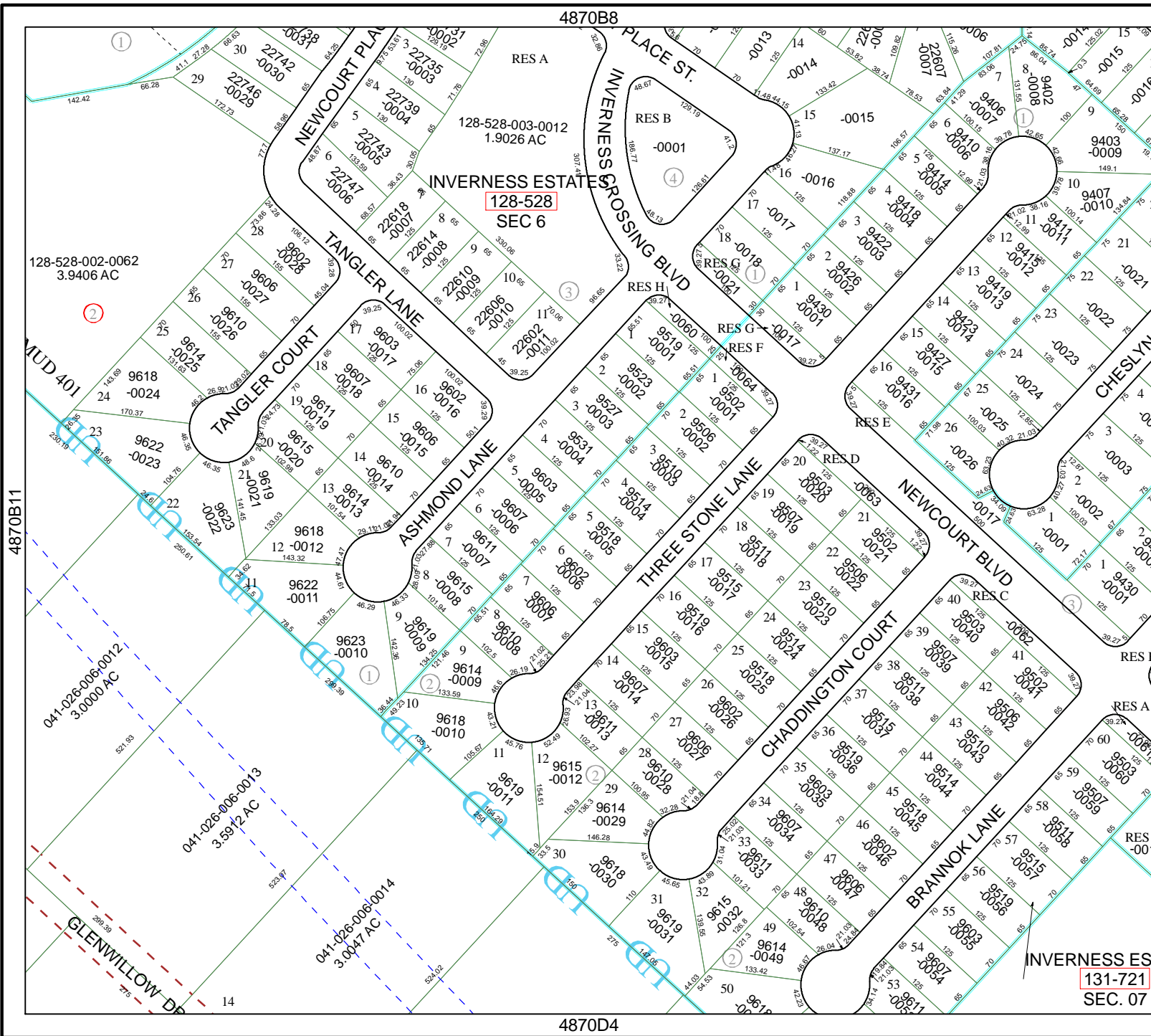
Geospatial or map data maintained by the Harris County Appraisal District is for informational purposes and may not have been prepared for or be suitable for legal, engineering, or surveying purposes. It does not represent an on-the-ground survey and only represents the approximate location of property boundaries.

MAP LOCATION



FACET 4870B

1	2	3	4
5	6	7	8
9	10	11	12



INVERNESS ES
 131-721
 SEC. 07

4870B8

4870D4

4870B11

4970A9

