

Harris County Appraisal District

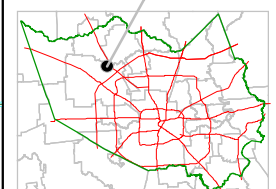


0 100 200
PUBLICATION DATE:
 8/15/2011

Geospatial or map data maintained by the Harris County Appraisal District is for informational purposes and may **not** have been prepared for or be suitable for legal, engineering, or surveying purposes. It does **not** represent an on-the-ground survey and only represents the approximate location of property boundaries.

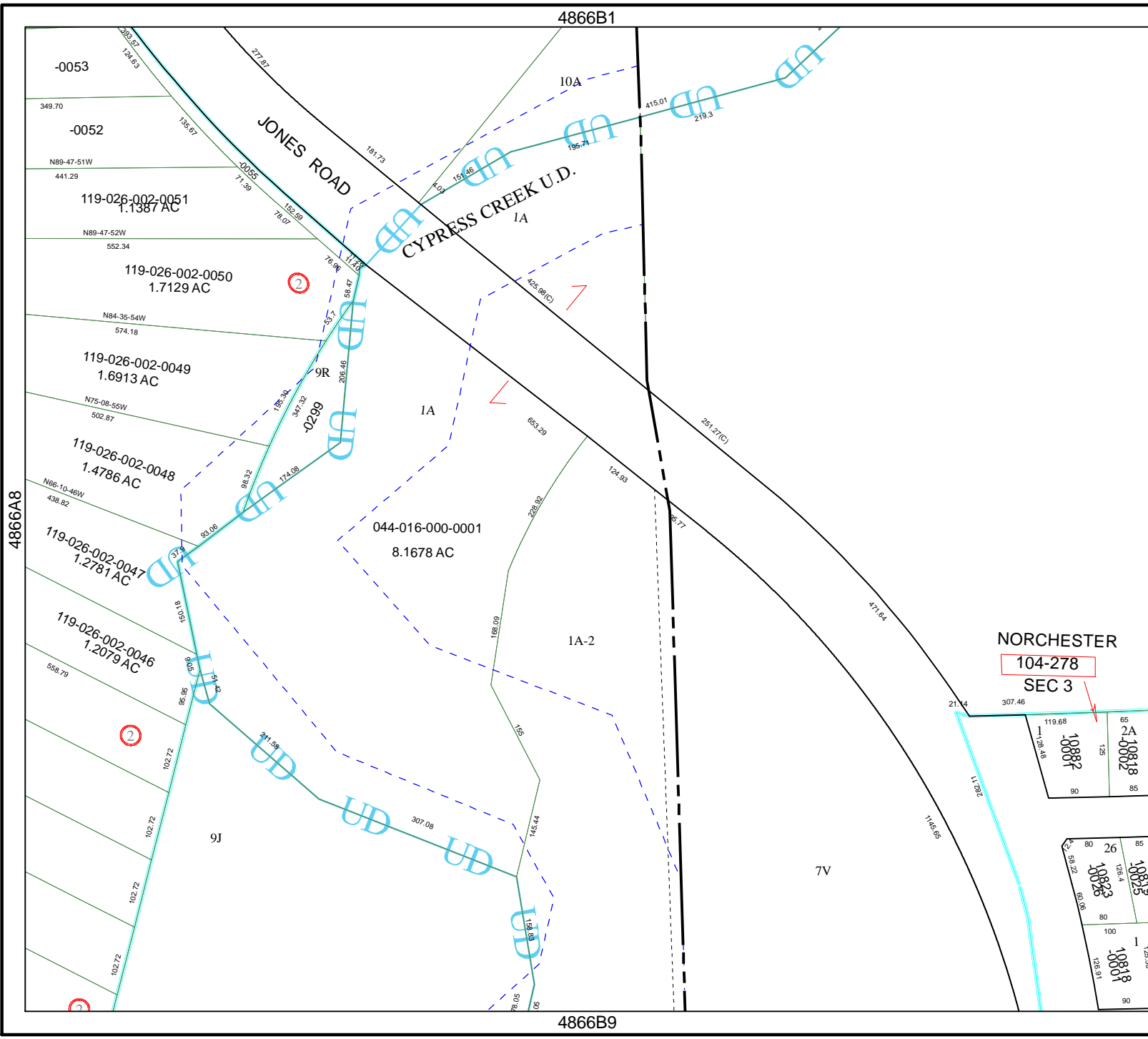


MAP LOCATION



FACET 4866B

1	2	3	4
5	6	7	8
9	10	11	12



4866B6

4866A8

4866B1

4866B9

NORCHESTER

104-278
 SEC 3