

Harris County Appraisal District



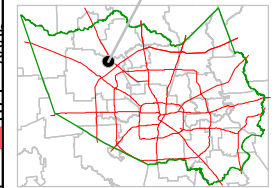
0 100 200

PUBLICATION DATE:
10/1/2011

Geospatial or map data maintained by the Harris County Appraisal District is for informational purposes and may not be suitable for legal, engineering, or surveying purposes. It does not represent an on-the-ground survey and only represents the approximate location of property boundaries.



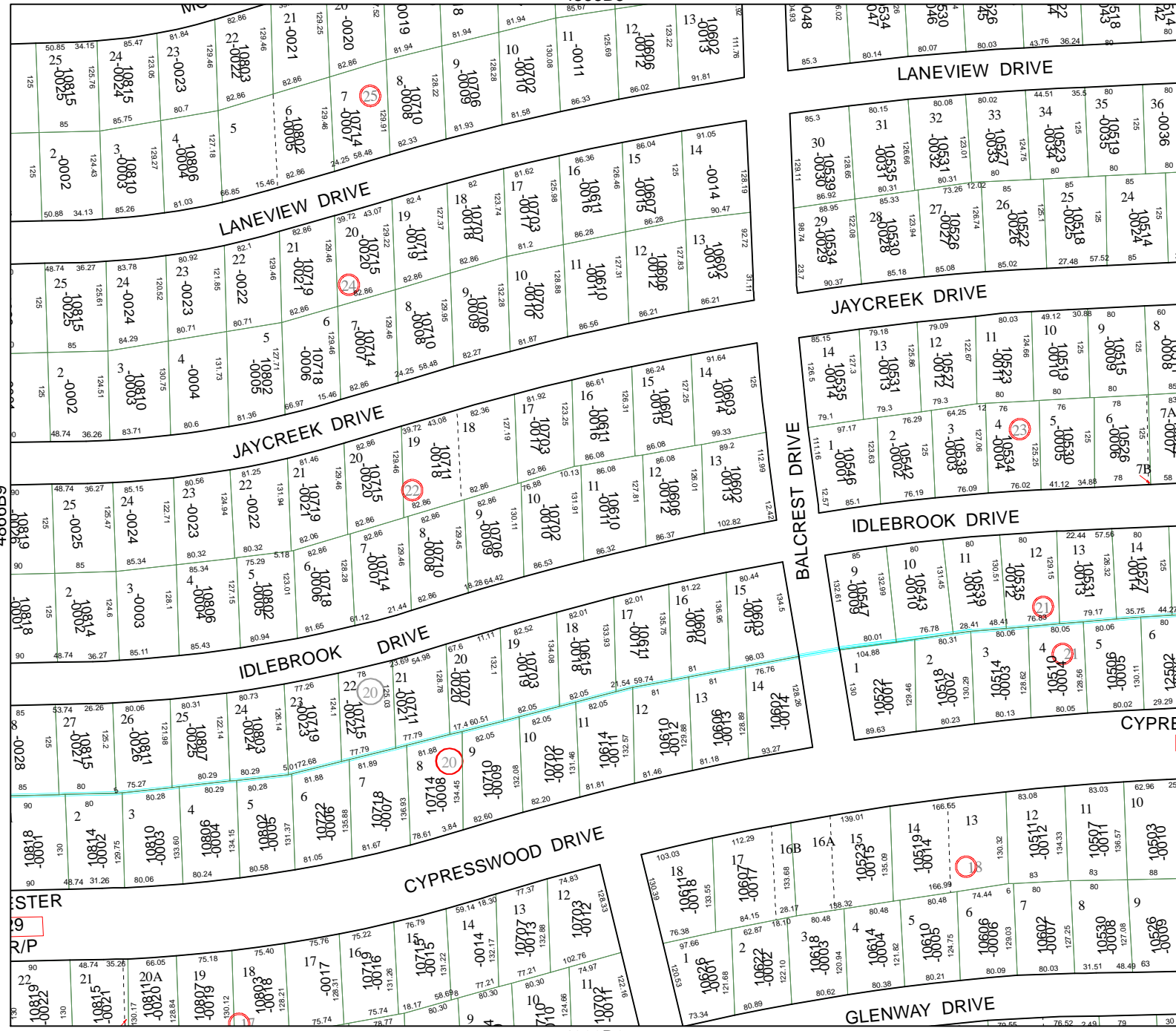
MAP LOCATION



FACET 4866B

1	2	3	4
5	6	7	8
9	10	11	12

4866B6



4866D2

699684

4866B11

STER
R/P