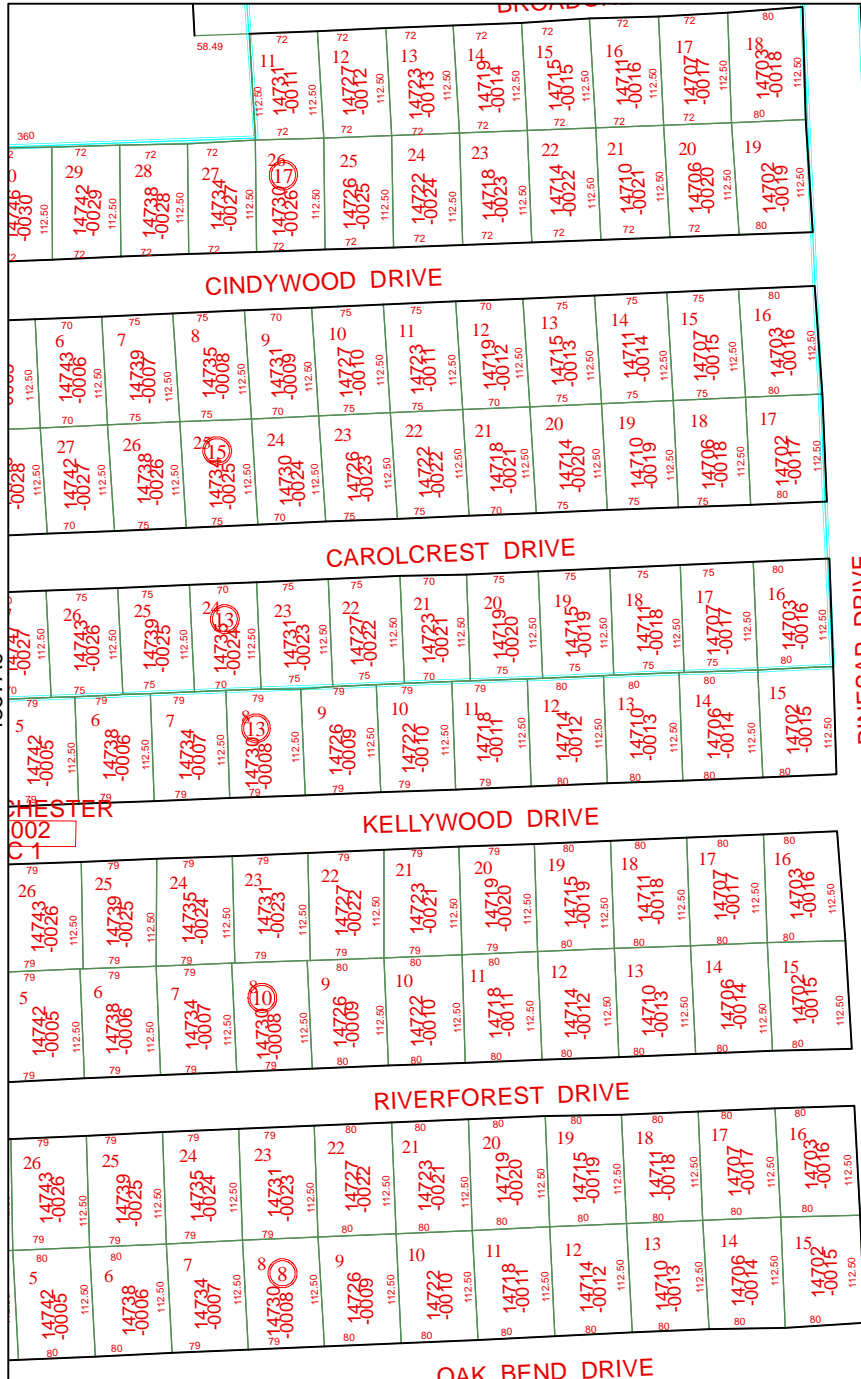
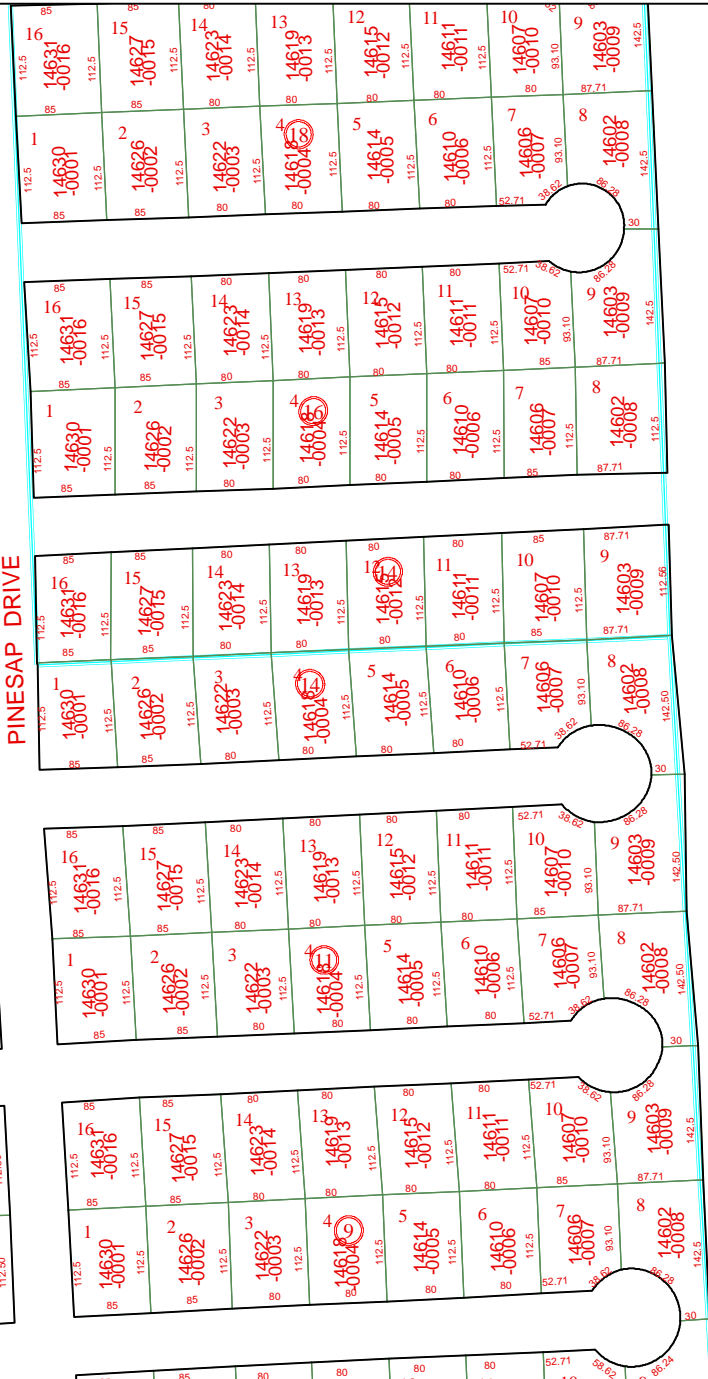


4857A6

4857A9



4857C2



Harris County Appraisal District

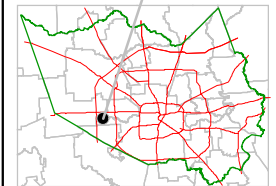


0 100 200

PUBLICATION DATE:
1/20/2012

Geospatial or map data maintained by the Harris County Appraisal District is for informational purposes and may not be suitable for legal, engineering, or surveying purposes. It does not represent an on-the-ground survey and only represents the approximate location of property boundaries.

MAP LOCATION



FACET 4857A

1	2	3	4
5	6	7	8
9	10	11	12

4857A11

