

Harris County Appraisal District

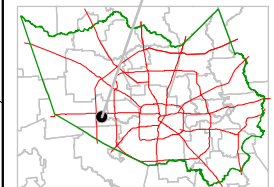


0 100 200

PUBLICATION DATE:
2/8/2012

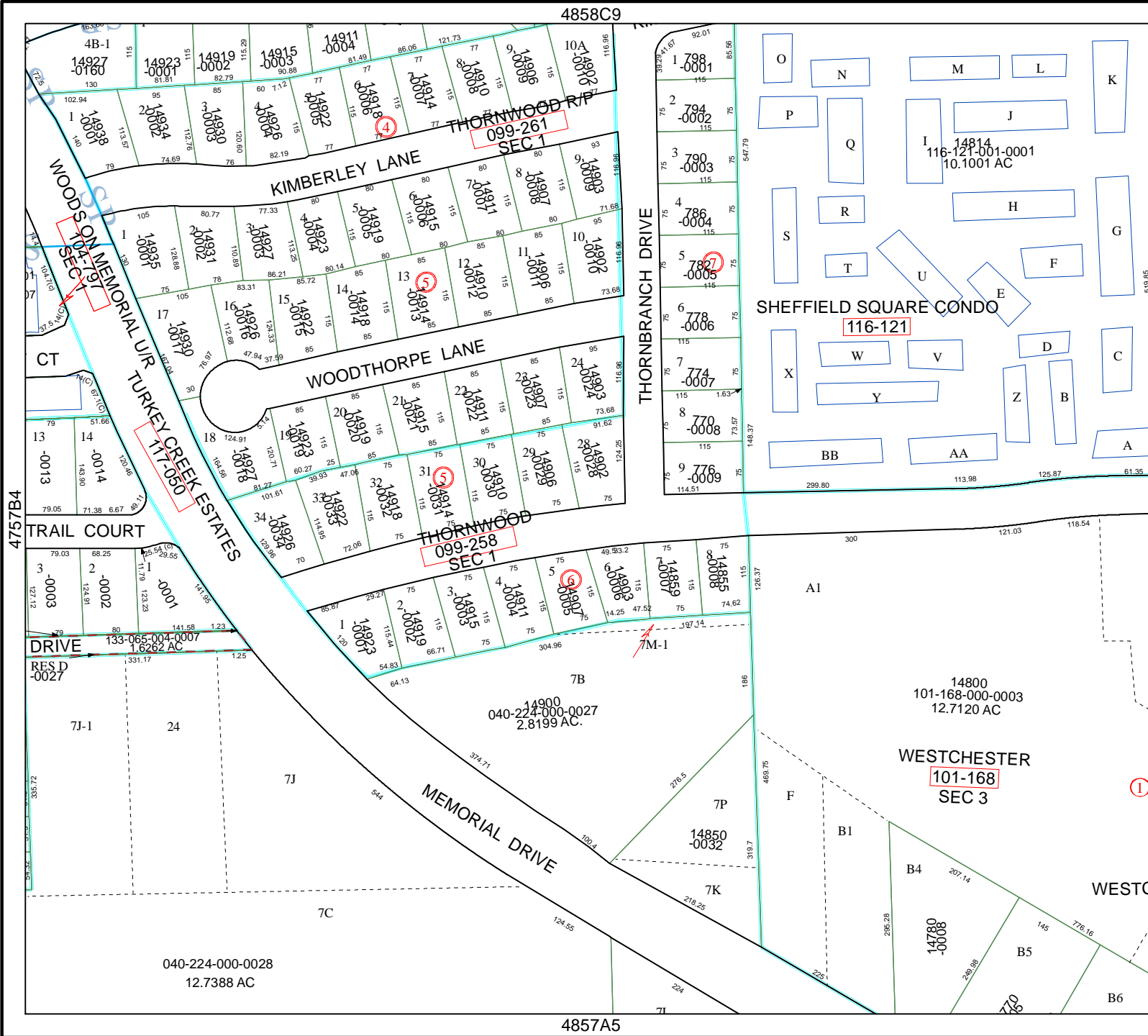
Geospatial or map data maintained by the Harris County Appraisal District is for informational purposes and may not have been prepared for or be suitable for legal, engineering, or surveying purposes. It does not represent an on-the-ground survey and only represents the approximate location of property boundaries.

MAP LOCATION



FACET 4857A

1	2	3	4
5	6	7	8
9	10	11	12



4757B4

4858C9

4857A2

4857A5

040-224-000-0028
12.7388 AC

14800
101-168-000-0003
12.7120 AC

WESTCHESTER
101-168
SEC 3

040-224-000-002